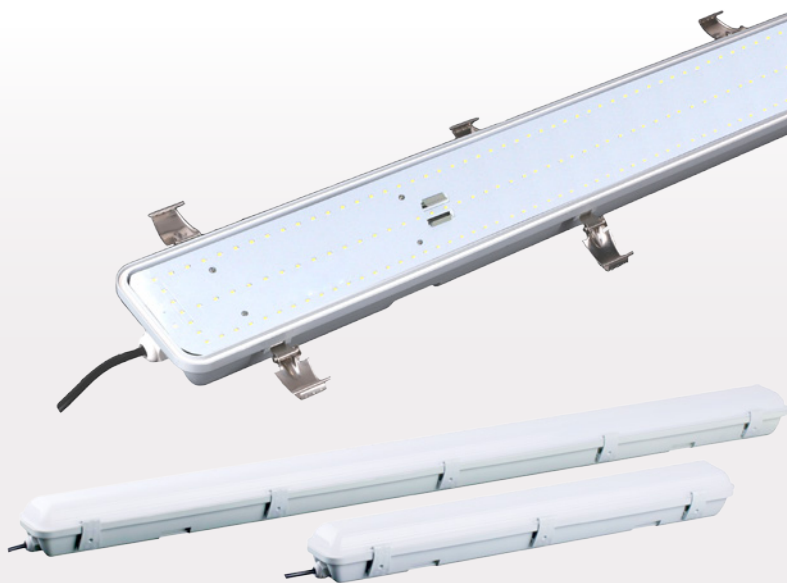


EARTHLIGHT
ZEUS Tri-Proof Series
LED LIGHTS



FEATURES

- Patent and functional design with imaginative appearance
- Suitable for environment requires water-proof, dust-proof, corrosion-proof lighting.
- V0 rating of fireproof
- Adjustable installation Angle can change the direction of light
- High luminous efficiency and High CRI Reaching 120Lm/W
- No UV ,No lead, No Mercury
- Stainless /Plastic clipper

APPLICATIONS

- Supermarket
- Warehouse
- Parking lots
- MTR stations
- Train stations
- Airport
- Gas stations
- Tunnel
- Cold Storage



GENERAL SPECIFICATIONS

Models	ETG-ZLB60-CW / ETG-ZLB12-CW
Light Source	SMD 2835
Operational Temperature	-20 °C ~ 50 °C
Power	20W / 40W
PF	>0.975
Input Voltage-Hz	AC100-277 50-60Hz
THD	<10%
Application	Indoor / Semi-Outdoor
Warranty	5 Years

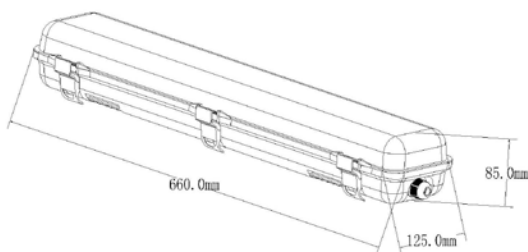
SPECIFICATION



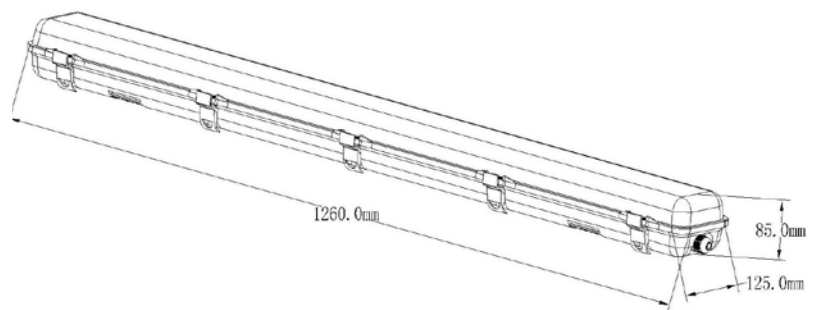
MODEL	ETG-ZLB060-CW	ETG-ZLB12-CW
Power(W)	20	40
Light Source	2835	2835
LED Qty	168 pcs	338 pcs
AC Input	100-277V 50/60Hz	100-277V 50/60Hz
Operating Temperature	-20°C ~ 40°C	-20°C ~ 40°C
IP Grade	IP65	IP65
Efficiency of Power	88%	88%
Power Factor	>0.95	>0.95
Body	ABS Housing	ABS Housing
THD	<15%	<15%
Lumens	2400	4800
CRI	80	80
Beam Angle	120°	120°
Dimension	660 x 125 x 85 (LxWxH)	1260 x 125 x 85 (LxWxH)
Lifespan	>50000	>50000
Warranty	5 Years	5 Years

● AVAILABLE UPON REQUEST: DC Input Power Version Available

DIMENSION



ETG-ZLB60-CW-DC



ETG-ZLB12-CW



LIGHT SOURCE:

High luminous efficiency and high CRI
Using SMD 2835 LED, reaching 120LM/W,
CRI over 80Ra.



LED DRIVER

AGT driver, TUV / FCC / SAA / CE /
ROHS / CB Certificated PF>0.95



CABLES

TUV certificated rubber cable. Three
cores--1.0mm²

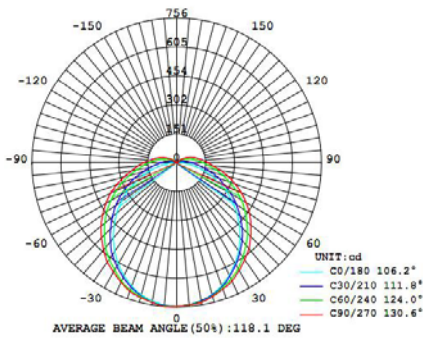


CLIP & CONNECTER

Stainless / Plastic clip, Easy
connection between lights.

REAL IES TEST DATA OF THE 20WATT. IT REACHES 128.4LM/W. TEST VOLTAGE: AC218.8V

LUMINOUS INTENSITY DISTRIBUTION

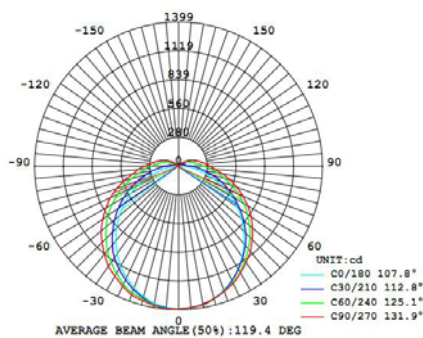


AVERAGE AND CENTER E FIGURE (ANGLE-106.5°)

Height	AVR E	CENTER E	Diameter
1.50m	116.36lx	334.21lx	401.61cm
2.00m	65.45lx	187.99lx	535.48cm
4.00m	16.36lx	47.00lx	1070.95cm
4.50m	12.93lx	37.13lx	1204.82cm
6.00m	7.27lx	20.89lx	1606.43cm

REAL IES TEST DATA OF THE 40WATT. IT REACHES 122.6LM/W. TEST VOLTAGE: AC218.8VAC 218.8V

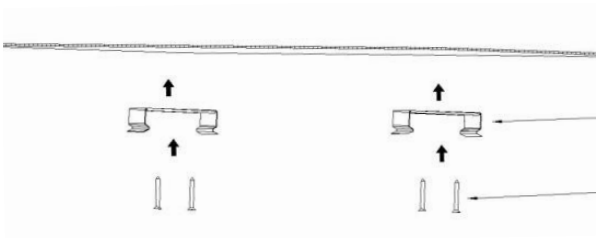
LUMINOUS INTENSITY DISTRIBUTION



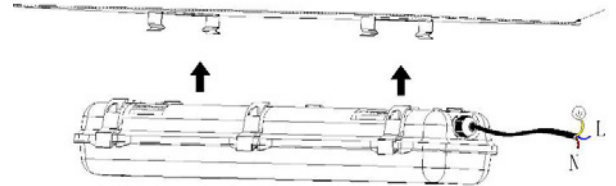
AVERAGE AND CENTER E FIGURE (ANGLE-106.5°)

Height	AVR E	CENTER E	Diameter
1.50m	217.42lx	617.99lx	401.61cm
2.00m	122.30lx	347.62lx	535.48cm
4.00m	30.57lx	86.90lx	1070.95cm
4.50m	24.16lx	68.67lx	1204.82cm
6.00m	13.59lx	38.62lx	1606.43cm

A. CEILING MOUNTED

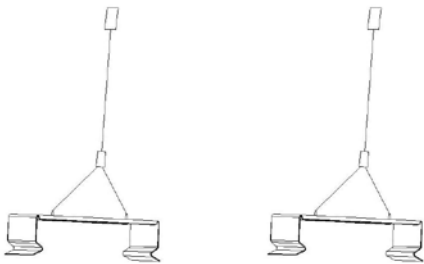


Drill Φ 6mm holes according to below drawing.
400mm distance between two clips.

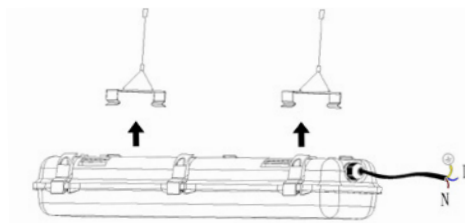


Fix the lamp on the ceiling. Then, connect the wires accordingly

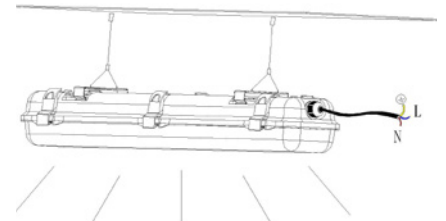
A. SUSPENDING



Install the hanging wire on ceiling.
400mm distance between two wires.



Fix the lamp.



Connect the wires accordingly.
Then, finish the installation.

PLEASE NOTE: All the operations must be in the condition of power off
The luminaries are intended for indoor and semi-indoor use.

- » Before installing the lighting fixtures, please read this instruction manual carefully.
- » The lighting fixtures should be installed, connected and tested by a certified installer based on the local regulations.
- » Lamps should always be installed or replaced with care.
- » Please check the local voltage in accordance with the product requirements before using the product.
- » Relamping only can be done when the power is off and the lamp is completely cooled down.
- » When a lamp is to be cleaned, make the power off and let it cool down completely. Clean the fixture with a soft cloth and a standard PH neutral detergent. Stainless steel finishing should be maintained regularly.
- » Misuse of, or changes to the fixture shall nullify the guarantee.
- » Don't cover the fixtures with flammable materials.
- » Exclusively replaced by the manufacturer or his service agent or the similar qualified person in order to avoid a hazard.



DISCLAIMER

Important Statement of warranty.

Earthtrack reserves the right to change or discontinue a product and / or specification without notice. All warranty periods only cover faulty workmanship and / or material components. Any claims on misused or disassembled products will not be recognized by Earthtrack. All information enclosed in this catalogue, to our knowledge, was correct at time of print.