



CREATE THE BEST WATER YOU CAN

INSTALLATION INSTRUCTION



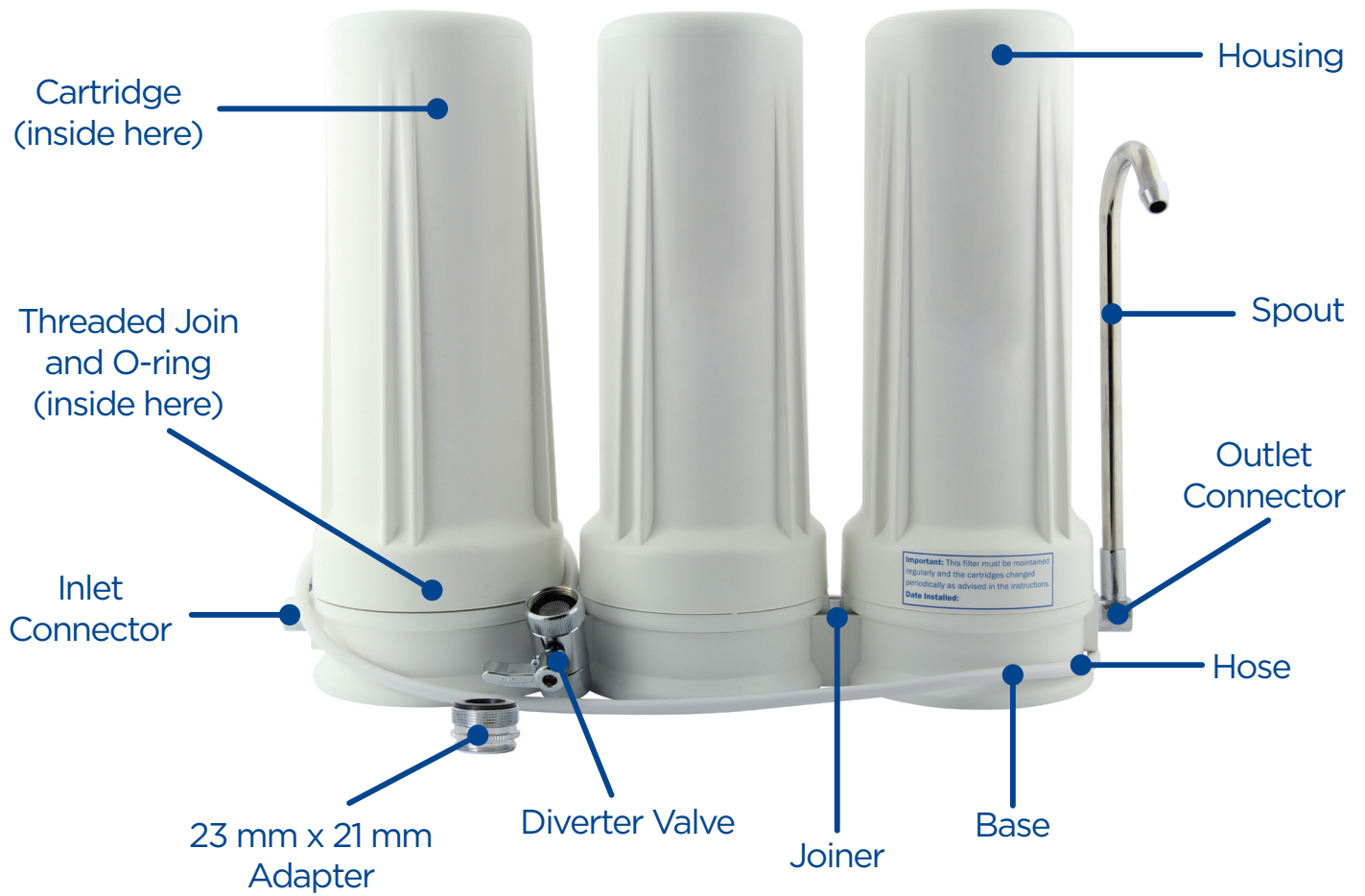
ULTRAPURE ARAGON 10" TRIPLE BENCHTOP CITY WATER FILTER WITH FLUORIDE REMOVAL AND ALKALINE

Thank You for trusting us with your Water Filtration needs.
Please read and follow the steps below on setting up your Product.

Ensure you check you have received ALL the correct components before you call & arrange the plumber or any installation just in the unexpected case that you have a missing part.

If you need any help, please call us at **1800-769-300** or contact us through our website at www.mywaterfilter.com.au/contacts/ or email us at customerservice@mywaterfilter.com.au

PARTS



BEFORE YOU START

Things you will need:

- ✓ Spanner
- ✓ Thread Tape

2 Easy Steps to Install:

1. Install system
2. Flush system & cartridges - Now Ready to use.

NOTE: DO NOT FLOW ANY WATER THROUGH THE SYSTEM OR THE CARTRIDGES UNTIL THE CORRECT FLUSHING PROCEDURE HAS BEEN DONE.

Take some time to clear any items out of the way to ensure you have a safe, clear area to install the water filter. Ensure there are no trip hazards or anything that can create harm in the work area.

Unpack and check that you have received your product in good condition. If it has been damaged in transit, please do not attempt to install or assemble the unit. Alert us immediately or as soon as possible, so we can provide the necessary assistance.

EASY INSTALLATION GUIDE



HOW TO CONNECT **BENCHTOP** WATER FILTER

[CLICK HERE TO WATCH THE VIDEO](#)

1. Assess the location where the benchtop water filter will be placed, Preferably, this must be near the faucet on the sink or the benchtop surrounding the sink.



2. Unscrew and remove the existing aerator off your faucet spout to expose the thread.



3. The diverter valve that comes with the system has a 21-millimeter female thread connection. If your faucet has a 21-millimeter male thread, ensure there is a rubber washer inside the diverter and simply connect by screwing the diverter valve straight onto your faucet thread.

However, if your faucet spout has a female thread connection, use the double male to male adaptor included with the system, simply connect the double male to male adaptor onto the tap spout thread first, ensuring there is a rubber washer to fit up into the tap spout thread to seal.



4. Then check there is a rubber washer inside the diverter and tighten the diverter onto the double male thread adapter until tight & sealed. A good seal also allows the water filter to be more responsive to the tap, stopping & starting the water flow. You may require a tool to tighten properly to be totally sealed with no leaks.

The diverter must be tightened tight to pull the diverter together to make it seal. You may use plumbers thread tape if required to help make a good seal on the threads as we do not want any water leaking from this point, but only use thread tape if required as thread tape can sometimes stop the diverter being tightened fully, the diverter must be tight to pull it together to seal it well.



HOW TO INSTALL YOUR BENCHTOP WATER FILTER IN THE LAUNDRY



LAUNDRY BENCHTOP WATER FILTER INSTALLATION

[CLICK HERE TO WATCH THE VIDEO](#)

NOTE: If your kitchen faucet doesn't have a 21-millimeter male thread, or a 23-millimeter female thread, or there is no suitable adapter for you then you can install the benchtop water filter in your laundry. You will require the correct parts for this.

The benchtop water filter units do not come with these laundry adaptor connectors. This must be purchased separately from the website of My Water Filter if required. Please call our customer service hotline for assistance.



1. Fold a towel and place it on the area you are working on. This will help with any water spillage or leak that might come from the connections that will be removed.
2. Turn off the laundry cold water washing machine tap and disconnect the cold water hose.



3. Unpack the [Easy Fit Laundry Connector 3/4" Male x 3/4" Female x 1/4" Side Female Connection](#) and ball valve.

NOTE: The benchtop water filter units do not come with these laundry adaptor connectors. This must be purchased separately from the website of My Water Filter if required. Please call our customer service hotline for assistance.

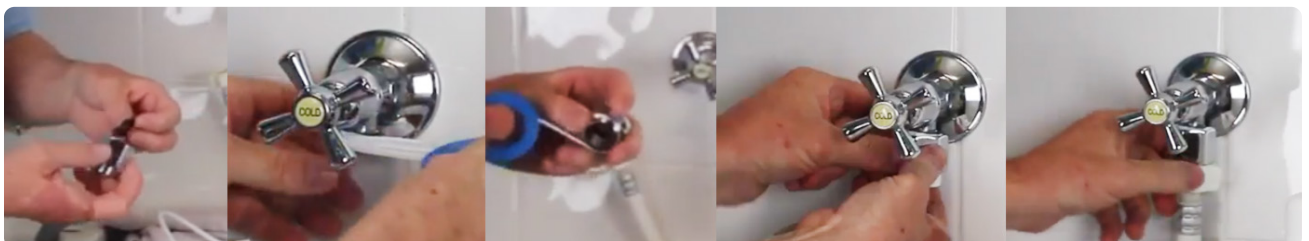


4. Insert the rubber washer inside the 3/4" Easy Fit Laundry Connector. Wrap thread tape around the 3/4" male threaded end of the laundry cold water tap. Wrap the 3/4" male threaded end of the Easy-Fit Laundry Connector with thread tape. Screw the 3/4" female end of the Easy-Fit Laundry Connector onto the laundry cold water tap thread.

Hand tighten then tighten firmly using a tool or spanner. Avoid over-tightening as this might squash the rubber washer and cause water flow restriction.

Make sure the side threaded hole on the Easy-Fit Laundry Connector faces outward as this is where the on/off ball valve will be connected.

Screw the washing machine hose back onto the 3/4" male threaded end of the Easy-Fit Laundry Connector, then tighten firmly by hand.



5. Wrap thread tape around the 1/4" male threaded end of the on/off ball valve.

Screw the on/off ball valve into the threaded 1/4" thread on the side of the laundry connector.

Once connected turn on the water and check for any leaks. Once sealed, cut the end off the water supply tube squarely near the diverter you are not going to use.

Connect the water hose to the ball valve.



6. Once connected, Do Not turn on the water yet. Look at the flushing procedures as indicated in **How to Flush your Benchtop Filter**.

PLEASE NOTE: You **MUST** Flush your water filter as indicated in the appropriate flushing instructions for your water filter.

HOW TO CHANGE THE CARTRIDGES & FLUSH YOUR BENCHTOP WATER FILTER



FLUORIDE REMOVAL
ULTRAPURE
ARAGON
CARTRIDGE REPLACEMENT
AND FLUSHING GUIDE

[CLICK HERE TO WATCH THE VIDEO](#)

HOW TO CHANGE THE CARTRIDGES IN YOUR BENCHTOP WATER FILTER

1. Fold a towel in half and put it on top of your countertop or table. The towel when spread out, must be enough for the entire length of the benchtop water filter. This will serve as a cushion to protect the countertop and also act as a non-slip mat so the benchtop water filter will not slip when you're working with it.



2. Lay the benchtop water filter on its side on the towel. The spout must be facing away from you. This will make it stable and easy to work with. This will also allow you to have more leverage in opening the benchtop water filter housing.



3. Insert the housing opening tool onto the benchtop water filter housing. Ensure that the 4 groove points of the housing opening tool will go against the side of the benchtop water filter housing slots. This must be on the sides and not on top of the slots.



4. Press down on the housing opening tool until the seal breaks. Put the benchtop water filter in an upright position. Unscrew the housing then remove the cartridge inside. Discard the old cartridge and put it in the bin.



5. Get the new Aragon cartridge, remove any wrapping and insert it into the filter head cap.



6. Once the cartridge has been replaced, screw the housing back on and hand tighten. Insert the housing tool over the benchtop water filter. Lay the unit on its side with the spout facing you. Push the housing tool to tighten.



7. Once the water filter is installed correctly, **DO NOT TURN THE WATER FILTER ON YET**, until you read the **How to Flush your Benchtop Water Filter information BELOW**.

HOW TO FLUSH YOUR BENCHTOP WATER FILTER

1. Connect your water filter as required. **DO NOT TURN ON THE WATER YET**

CARTRIDGE POSITIONS:

Position 1 - Fluoride Removal Cartridge

Position 2 - Aragon Cartridge

Position 3 - Alkaliser Cartridge

2. Get the housing opening tool and open the three housings. Ensure the wrapping has been removed from the cartridges.
3. Ensure the Fluoride Removal Cartridge is installed into position 1, remove the Aragon cartridge from position 2, and remove the Alkaliser cartridge from position 3.
4. Screw back on the three housings and tighten.
ENSURE NO CARTRIDGE is installed into position 2 and position 3. Housing 3 is where the spout is connected. Housing 2 and housing 3 **MUST** be empty before starting the flushing procedure.
5. Slowly turn on the water. The filter will only take a minute to fill. Keep the water flowing only flushing the cartridge in position 1 for a minimum of 10 minutes.

You can get a bucket to save the water being flushed for the plants if preferred.

NOTE: The Fluoride Removal Cartridge works very well at removing Fluoride from the water, however, this **MUST** be flushed for a minimum of 10 minutes.

6. After flushing the Fluoride Removal Cartridge for 10 minutes, turn off the water and install the Aragon Cartridge into housing position 2, install the Alkaliser cartridge into position 3. No need to remove the cartridge in position 1.
7. Turn on the water and flush all 3 cartridges together at the same time for 5 minutes straight.

You can get a bucket to save the water being flushed for the plants if preferred.

The unit is now ready for use.

NOTE: Cartridges with carbon inside can emit black water when first flushed. This will become clear quite quickly.

PLEASE READ: If the water filter is unused for 5 or more days turn it on and flow water through the filter for 2 minutes before use.

My Water Filter

CREATE THE BEST WATER YOU CAN

FOR CUSTOMER SERVICE

CALL US AT 1800-769-300

MY WATER FILTER PTY LTD