



The Great Australian Water Purifier

FILTEROO GRAVITY WATER PURIFIER MANUAL



Thank you for investing in a Filteroo, the great Australian water purifier.

Please read and follow the steps below on setting up your Product.

Ensure you check you have received ALL the correct components in good condition.

If you need any help, please call us at **07 5641 4656** or contact us through our website at **www.filteroo.com.au** or email us at **admin@filteroo.com.au**

Table Of Contents

CHAPTER 1

PRE START

CHAPTER 2

HOW TO ASSEMBLE YOUR FILTEROO

CHAPTER 3

HOW TO REPLACE YOUR GRAVITY WATER FILTER CARTRIDGE IN YOUR FILTEROO

CHAPTER 4

HOW TO REPLACE YOUR GRAVITY WATER FILTER PH ELEVATION PAD IN YOUR FILTEROO

CHAPTER 5

CLEANING & MAINTENANCE OF YOUR FILTEROO GRAVITY WATER PURIFIER

CHAPTER 6

BEST PRACTICE WAYS TO TAKE CARE OF YOUR FILTEROO

PARTS



LID



BODY



TOP TANK



BASE



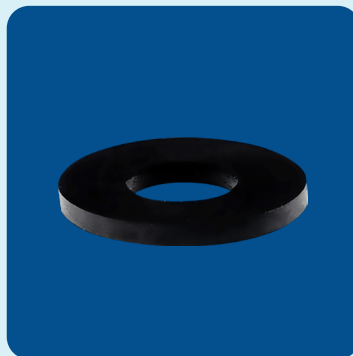
STEEL TAP



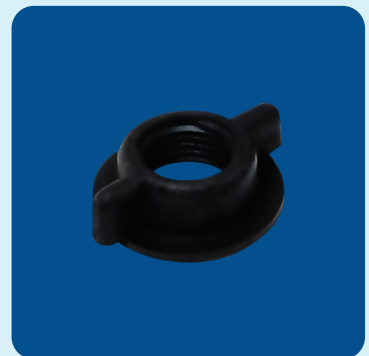
PH ELEVATION PAD



CARTRIDGE



WASHER



WINGNUT

PRE START

BEFORE YOU START

Take some time to clear any items out of the way to ensure you have a safe, clear area to install the water filter. Ensure there are no trip hazards or anything that can create harm in the work area.

Unpack and check that you have received your product in good condition. If it has been damaged in transit, please do not attempt to install or assemble the unit. Alert us immediately or as soon as possible, so we can provide the necessary assistance.

Cleanliness is important. Wash your hands before handling the cartridge at step 7 so no oil from your hands gets onto the cartridge and take care to ensure that no contamination of the cartridge occurs during assembly. Use a glove or similar if you like so your hands don't touch the cartridge.

3 EASY STEPS TO INSTALL:

1. Assemble system
2. Install cartridge & pH Elevation mineral pad
3. Flush system, cartridge & pad together - Now Ready to use, Enjoy...

HOW TO ASSEMBLE YOUR FILTEROO



[CLICK HERE TO WATCH THE VIDEO](#)

1. Wipe over each part of the Filteroo with a damp cloth to ensure it is nice and clean. Wipe dry.
2. Place the round base of the Filteroo onto the benchtop.



3. Sit the large Filteroo body on top of the base. Slowly turn the body to rotate it on the base to find the most secure position.



4. Remove the pH Elevation pad from the packet. Rinse the pH elevation pad around in a container of water for 30 seconds to remove any mineral fines from the pad. Place the pH elevation pad inside your gravity water filter onto the base of the bottom holding tank. (The pH elevation pad minerals will slowly dissolve in the water elevating the pH of the water to ensure you are drinking alkaline water with a pH level over 7pH).

5. Place the top tank in an appropriate position to install the gravity cartridge.
6. Open the gravity cartridge box and remove the cartridge from the box. (Treat the ceramic gravity cartridge like an egg). Without touching the white ceramic shell of the cartridge, hold the cartridge under a flowing tap or swirl the cartridge around in a container of clean water for 30 seconds to rinse any ceramic fines from the outside of the cartridge.

Once the cartridge is flushed you can insert the cartridge back inside the plastic wrap. (Then as you install the cartridge the plastic wrap can protect the cartridge so as to not touch the cartridge with your bare hands).



7. Ensure the sealing washer is placed over the threaded stem of the cartridge. Insert the cartridge threaded stem with the washer on through the hole in the top tank from the inside of the tank out. Screw the wing nut up tight onto the threaded stem. (To ensure you can tighten the wing nut as secure as possible do not use any washer at this point, just have the wing nut tighten against the outside base of the ceramic top tank). Do not overtighten the wing nut, but it must be tightened firm.



8. Place the top tank with the cartridge installed inside the top of the filter body. Ensure that the outlet tap is in the off position. Fill the top tank with cold water and allow this water to filter down through the cartridge into the lower bottom holding tank.



9. It is recommended that this first supply of filtered water is thrown away, as it may contain material washed from the filter cartridge. Some black carbon fines may be seen in the bottom holding tank when first using but this is harmless and will stop soon.

10. Open the outlet tap and allow the water to run to waste. Fill the top tank again, open the outlet tap and allow this water to run to waste also. We recommend filling the top tank 3 times and flushing that water through the cartridge to waste until it is running clear for the best flushing results and taste.



HOW TO REPLACE YOUR GRAVITY WATER FILTER CARTRIDGE IN YOUR FILTEROO



[CLICK HERE TO WATCH THE VIDEO](#)

Cleanliness is important. Wash your hands before handling the cartridge so no oil from your hands gets onto the cartridge and take care to ensure that no contamination of the cartridge occurs during installation.

Use a glove or similar so your hands don't touch the cartridge as much as possible.

If you are using the Doulton or Ultraceram cartridge, if you have a 10 litre or 12 litre system, this cartridge installation process is the same for all.

1. If replacing a used cartridge, please remove the gravity filter lid, lift out the top tank & empty any water out & wipe dry, unscrew the wing nut holding the cartridge in place and remove the old cartridge. (You can keep the old wing nut in case you strip the thread or require a replacement wing nut at any time). Wrap any used cartridges in paper & place them into the rubbish bin.



2. Open the gravity cartridge box and remove the cartridge from the box. (Treat the ceramic gravity cartridge like an egg). Without touching the white ceramic shell of the cartridge, hold the cartridge under a flowing tap or swirl the cartridge around in a container of clean water for 30 seconds to rinse any ceramic fines from the outside of the cartridge.

Once the cartridge is flushed you can insert the cartridge back inside the plastic wrap. (Then as you install the cartridge the plastic wrap can protect the cartridge so as to not touch the cartridge with your bare hands).



3. Ensure the sealing washer is placed over the threaded stem of the cartridge. Insert the cartridge thread with the washer on through the hole in the top tank from the inside of the tank out, and secure the wing nut on the underside of the top tank, with no washer at the wing nut. (To ensure you can tighten the wing nut as secure as possible do not use any washer at this point, just have the wing nut tighten against the ceramic tank). Do not overtighten the wing nut, but it must be tightened firm.



4. Place the top tank with the cartridge installed inside the top of the filter body. Ensure that the outlet tap is in the off position. Fill the top tank with cold water and allow this water to filter down through the new cartridge into the lower bottom holding tank.



5. It is recommended that this first supply of filtered water is thrown away, as it may contain material washed from the filter cartridge. Some black carbon fines may be seen in the bottom holding tank when first using but this is harmless and will stop soon.

6. Open the outlet tap and allow the water to run to waste. Fill the top tank again, open the outlet tap and allow this water to run to waste also. We recommend filling the top tank 3 times and flushing that water through the cartridge to waste until it is running clear for the best flushing results and taste.



HOW TO REPLACE YOUR GRAVITY WATER FILTER PH ELEVATION PAD IN YOUR FILTEROO

The pH Elevation pad is a great way to change acidic water like rainwater to be alkaline water or to elevate treated town or city water to be a higher alkaline. It is becoming common knowledge nowadays that human beings should consume alkaline water for optimum health.

Cleanliness is important. Wash your hands before handling the pH elevation pad so no oil or dirt from your hands gets onto the pad. Use a glove or similar so your hands don't touch the cartridge as much as possible.

1. Remove the pH Elevation pad from the packet.
2. Rinse the pH elevation pad around in a container of water for 30 seconds to remove any mineral fines from the pad.
3. Remove the top tank from your gravity water filter, place the pH elevation pad inside your gravity water filter onto the base of the bottom holding tank.
4. Reinstall the top tank.

The pH elevation pad minerals will slowly dissolve in the water elevating the pH of the water to ensure you are drinking alkaline water with a pH level over 7pH.

The filter is now ready for use.
Enjoy...

CLEANING & MAINTENANCE OF YOUR FILTEROO GRAVITY WATER PURIFIER

The cleaning & maintenance of a Filteroo gravity water purifier is very low. But there is a few things to keep an eye on and check from time to time, it is important to keep your Filteroo system & filter cartridge as clean as possible.

Obviously when you receive your Filteroo it will be brand new in pristine condition, nice and clean. If the Filteroo was never used and kept inside a glass cover it would stay in that condition for a very long time and require no cleaning or maintenance.

But we all use our Filteroo to create the best water we can, so the Filteroo can become dirty and even contaminated with unwanted nasties found in your own home. With this in mind we do need to carry out some minor maintenance & cleaning as required.

On the maintenance side, it is really only the tap that requires an inspection to ensure it is still connected tight and will not leak. Ensure the locking nut on the inside of the filter body that holds the tap in place is always tight. Best to check the nut is tight each time you change the cartridge or clean the system.

How often the system requires cleaning is governed by the environment the water filter is used in and the water quality of the water poured into the filter top tank.

It is quite simple, if you have your filter in the kitchen and there is a lot of cooking etc taking place, then it is possible there is a lot of fats and cooking by-products in the air that will land on the filter which requires cleaning. If the filter is in a clean room with no cooking then the time between cleaning will be longer.

At times rain water, and even some tap water can have a lot of sediment in the water which will build up on the outside of the ceramic cartridge. That can slow the filtered water flow rate down and then the cartridge requires cleaning to allow the water to flow through the cartridge again.

Things to look out for cleaning are.

- 1. Fats & grim building up on the outside of the filter housing from cooking in the kitchen**
- 2. Dirt & dust building up on the outside of the filter**
- 3. Cartridge colour change & the water flow of your ceramic cartridge slowing down**
- 4. Growth inside of your tap**
- 5. Any growth or buildup inside the storage tank**

If your Filteroo has been used for some time & you can see anything starting to build up on the outside. Simply wipe & wash the outside of the body with dishwashing detergent to keep it clean, dry it off so dust wont stick to it and your done.

If you can see your ceramic cartridge is blocking from the fine sediments in the water and that is building up on the outside of the cartridge. Or the water flow rate is slowing down. Wash your hands first, then whilst ensuring you wear gloves, or do not handle the ceramic part of the cartridge, simply remove the cartridge and give it a harsh scrub under a flowing tap with some 100 grit sandpaper to remove any build up & make the ceramic cartridge nice and clean and white again. The cartridge can be scrubbed like this up to 100 times. Treat the cartridge like an egg, if dropped the cartridge may crack.

Depending on the environment your gravity water filter is stored in will dictate what cleaning is required on the inside. It is common now days that mould can be a issue in homes throughout Australia, especially in the wetter humid climates.

When you change your cartridge, or as required if you ever see any contamination on the inside of your water filter, drain out any water & remove the cartridge.

Give the entire inside a good wipe over with white vinegar or hydrogen peroxide. Hydrosil is a great product to sterilise your gravity water filter system. Non toxic yet kills bugs and bacteria.

[HydroSil-Pure 3% Hydrogen Peroxide All Purpose Disinfectant with Silver](#)

In relation to the tap, this also requires an inspection to ensure it stays clean. Simply insert an appropriate brush cleaning tool up into the inside of the tap and push it back & forth to clean the inside. You can also use a cotton bud or similar, anything that will remove any build up inside your tap.

In extreme circumstances fill a container with HydrosilUltra or similar product and place the tap into that solution to soak whilst still attached to the filter, open the tap so the solution fills up inside the tap then into the filter body. Let that soak for as long as possible or 2 hours. Then scrub again inside the tap & wipe clean so the tap is fully sterilised inside. If you can not soak the tap whilst still attached to the filter. Remove the tap from the filter and just soak the tap in the solution.

Once fully cleaned, rinse all over and throughout the system with water to flush before use.

BEST PRACTICE WAYS TO TAKE CARE OF YOUR FILTEROO

Always wash your hands prior to touching the inside of the filter or the cartridge.

Always treat your cartridges like an egg, as if dropped they will crack.

Sit your gravity water filter out of direct sunlight, as far away from the stove or cooking areas as possible. Ideally keep it in the coolest part of the room.

If you have heavy sediment in your water pour the water through a cloth to trap any sediments possible from entering the filter top tank.

In extreme cases to prevent algae or any growth in the storage tank, wipe & wash the inner walls once per week. If this issue persists contact us.

If your system is ever leaking water, the most common cause is your tap needs to be tightened. If water is leaking from where the tap is fitted to the main body of the water purifier, simply empty the purifier and tighten the tap nut on the inside.

If your water flow slows down through the cartridge. Your filter cartridge may need to be cleaned. Water should pass through the ceramic filter at a rate of approximately one litre per hour.