

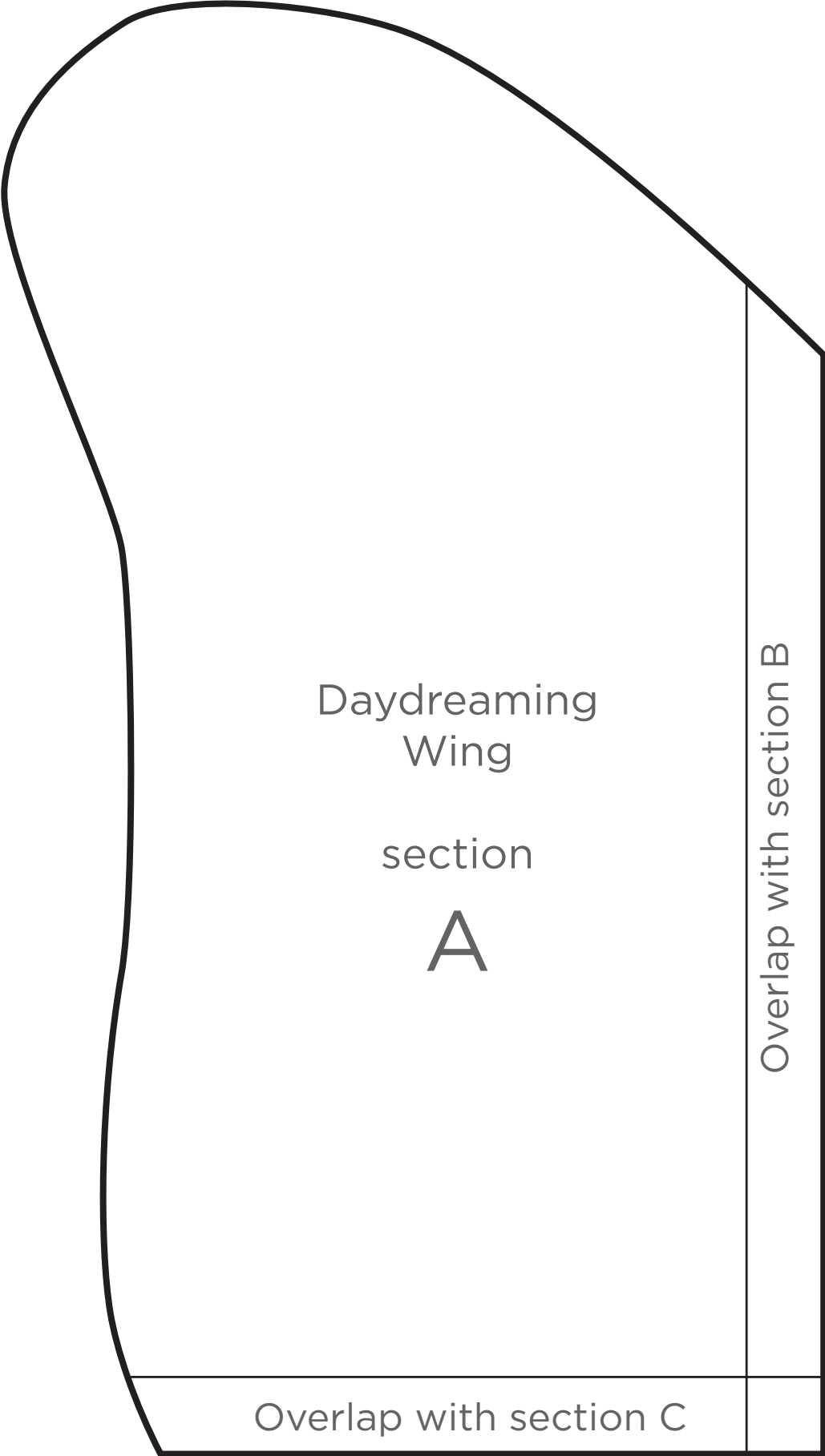
Daydreaming
Wing

The diagram shows two irregular, rounded shapes representing wings. The shape on the left is larger and more elongated, with a pointed top and a rounded bottom. The shape on the right is smaller and more rounded, with a pointed top and a rounded bottom. Both shapes are outlined in black and contain text labels.

lower wing
appliqué

Daydreaming
Wing

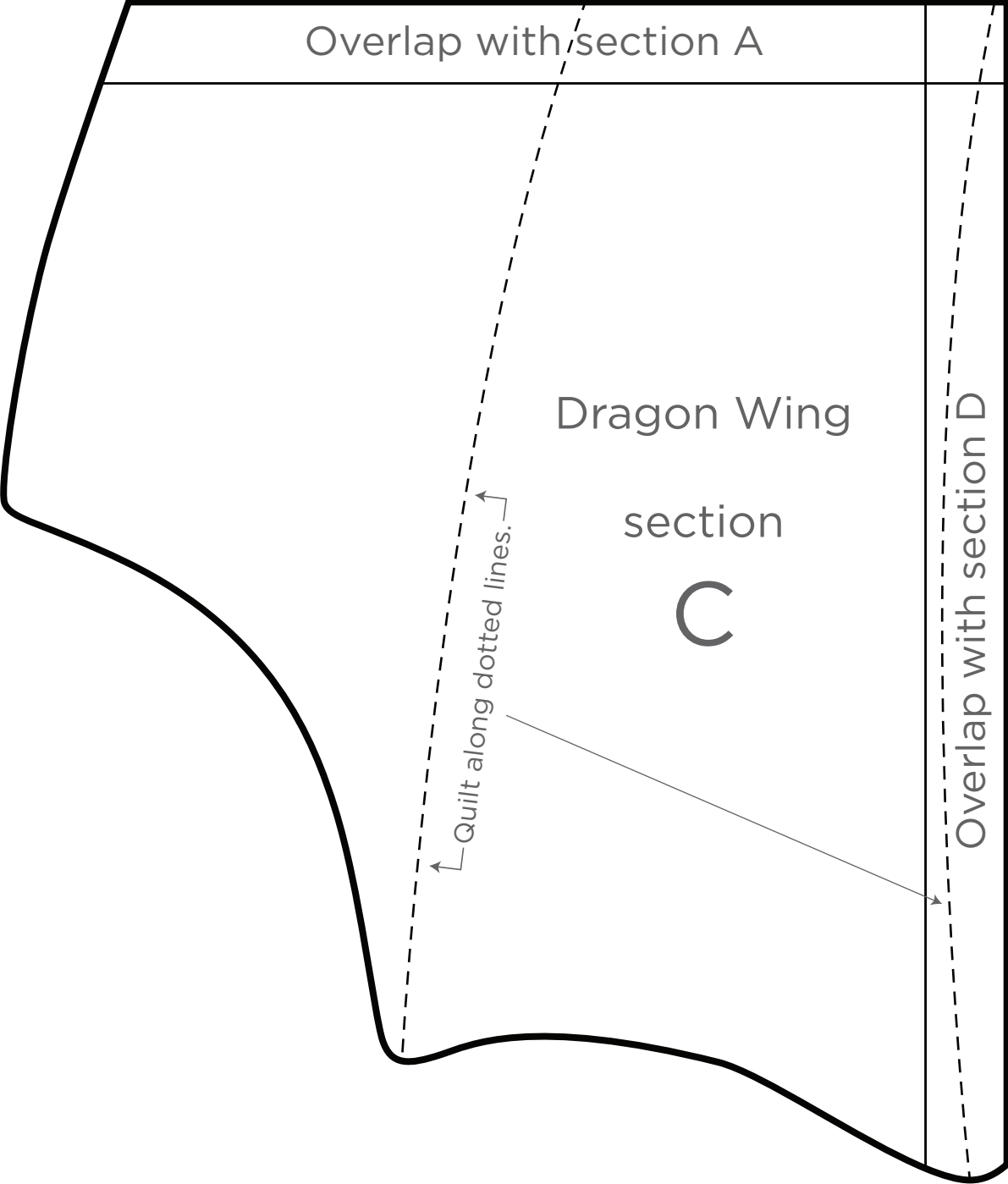
upper wing
appliqué

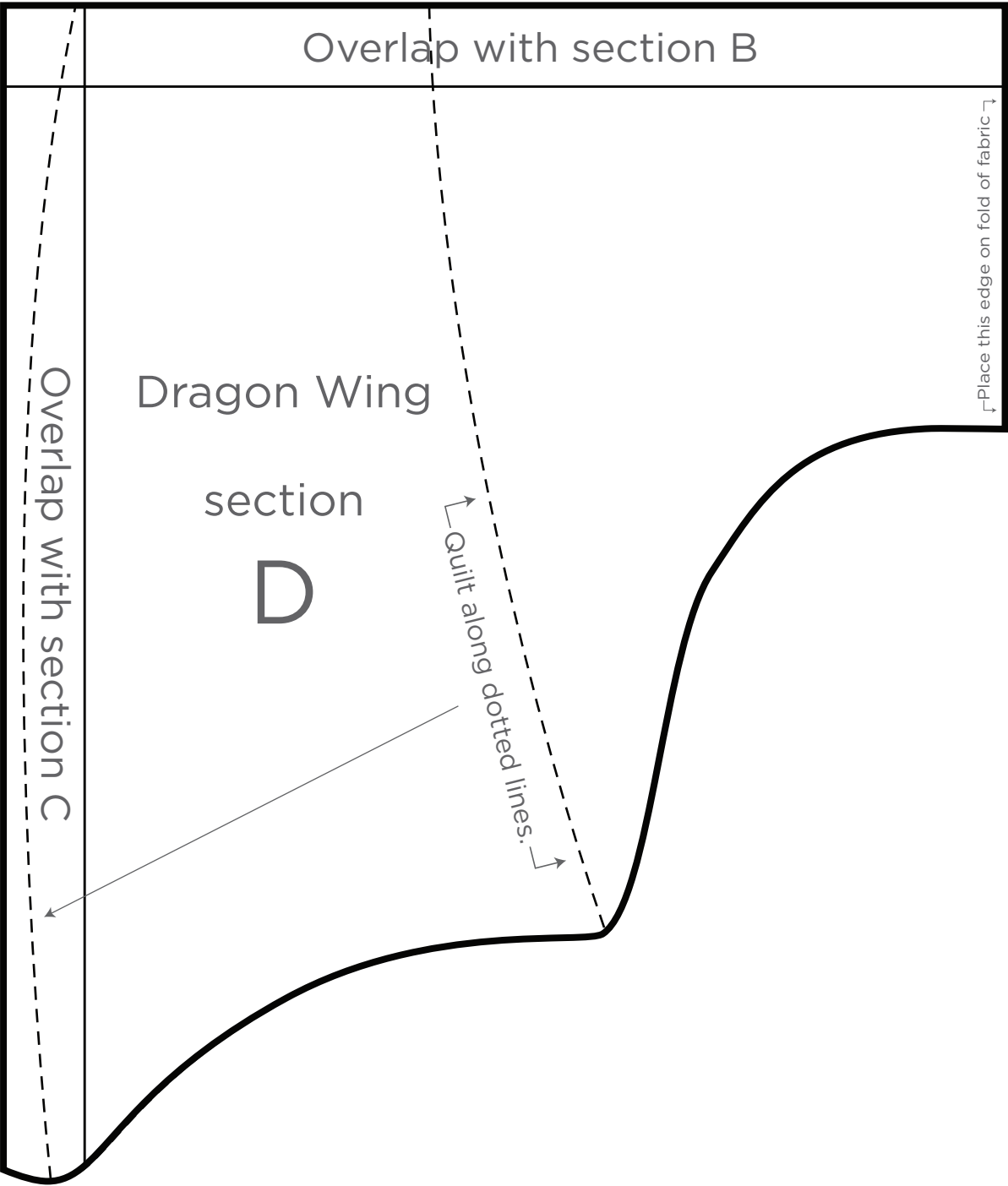


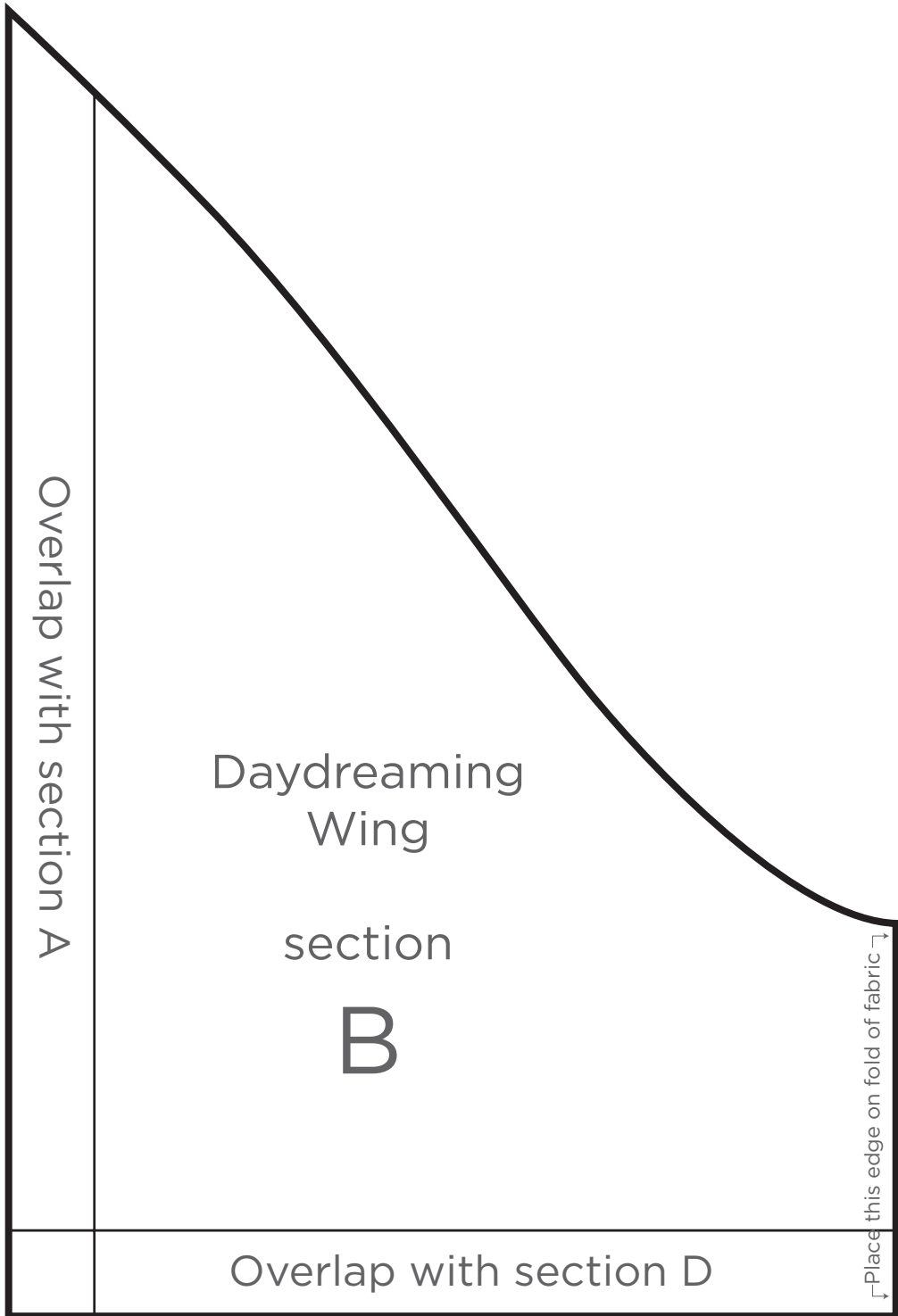
Daydreaming
Wing
section
A

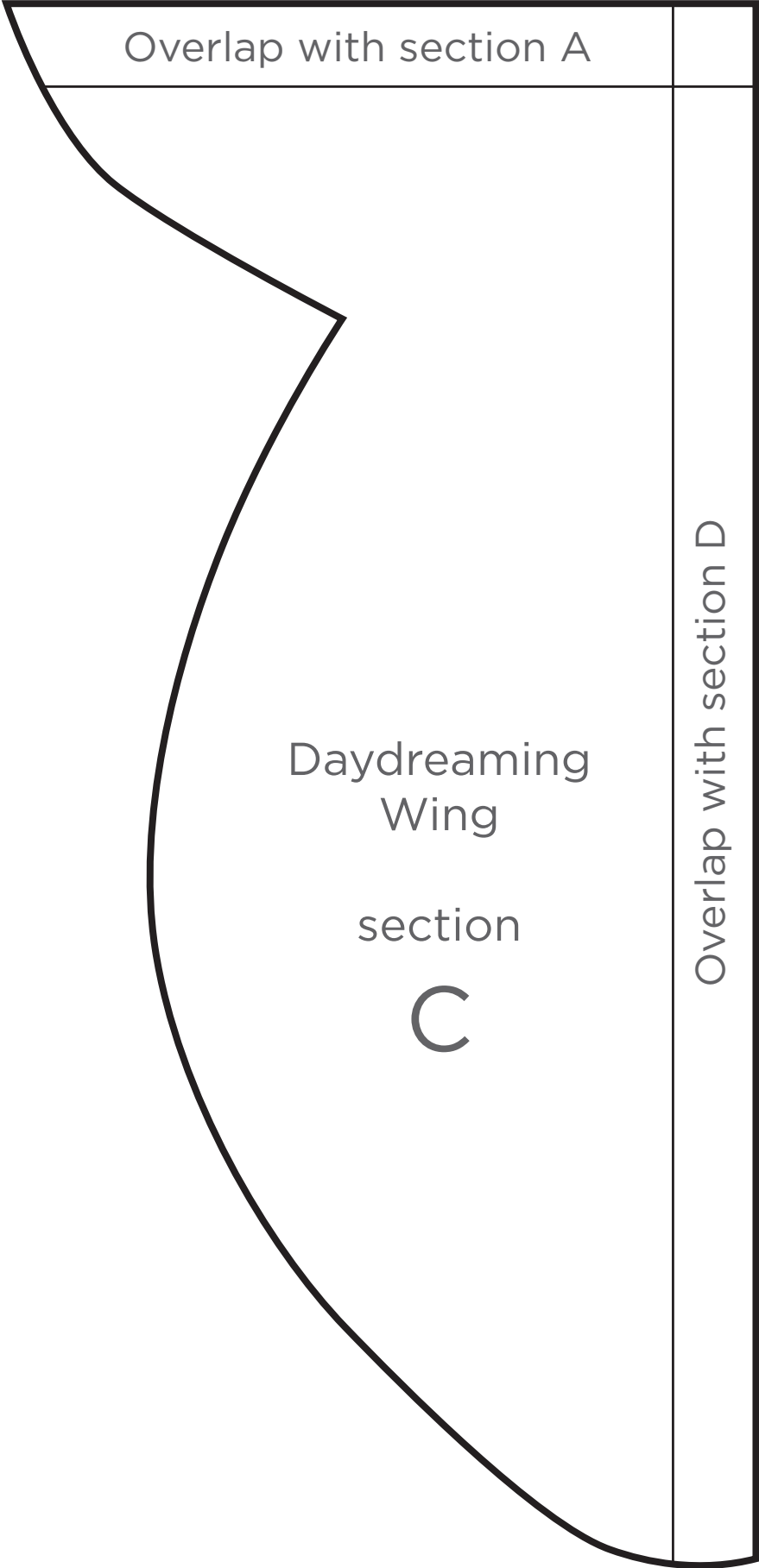
Overlap with section B

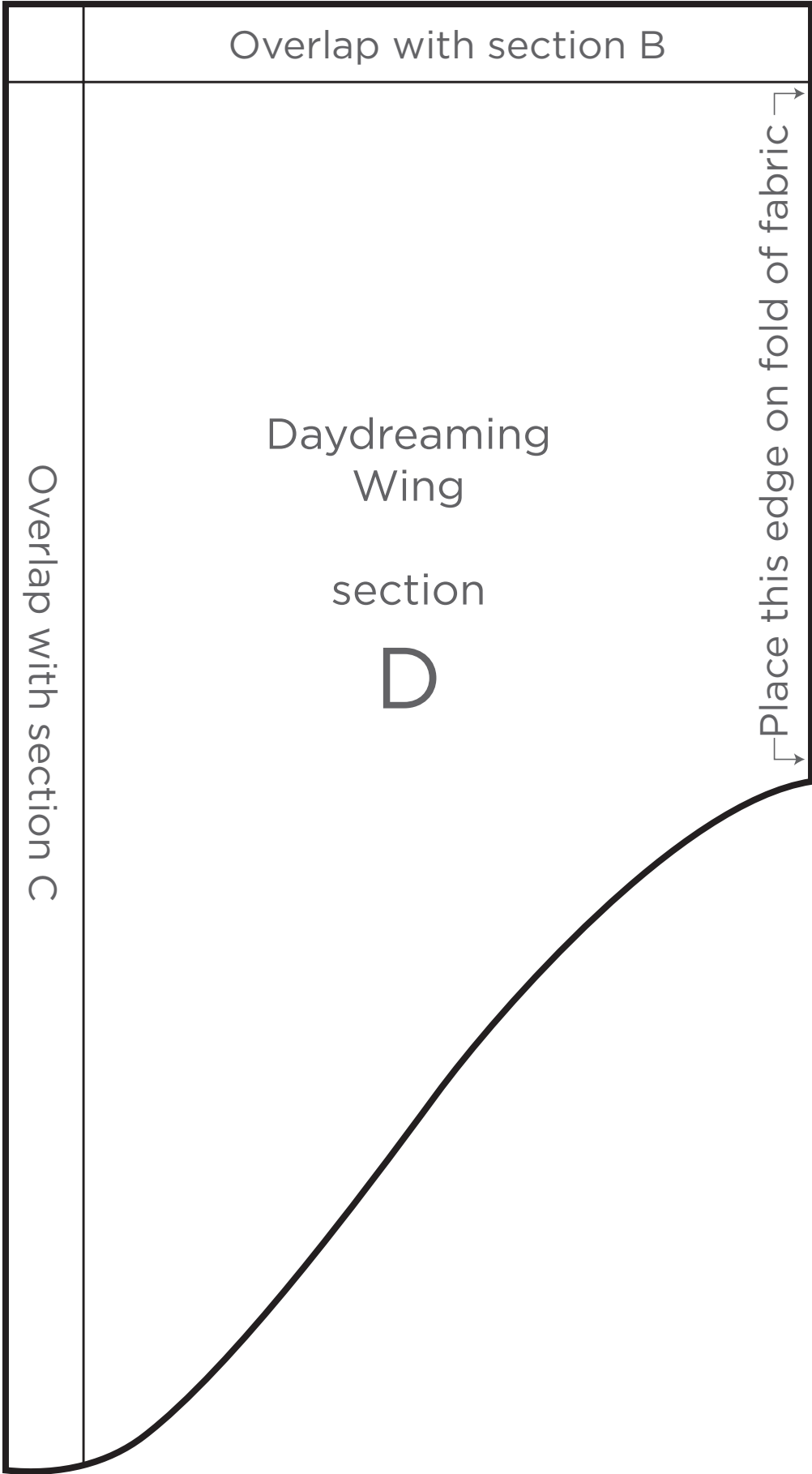
Overlap with section C



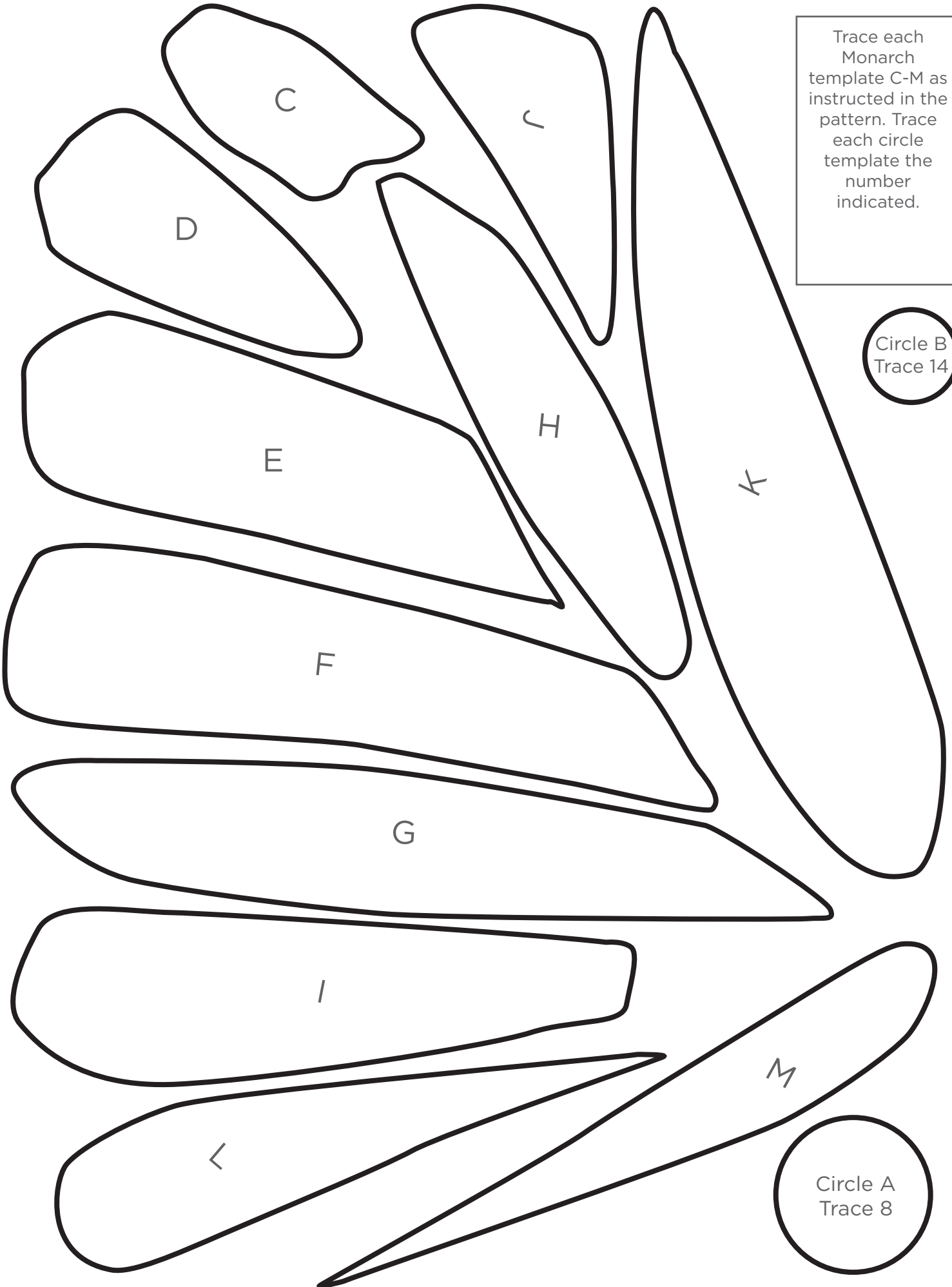








Trace each Monarch template C-M as instructed in the pattern. Trace each circle template the number indicated.



Circle B
Trace 14

Circle A
Trace 8

Monarch Wings
appliqué key.



