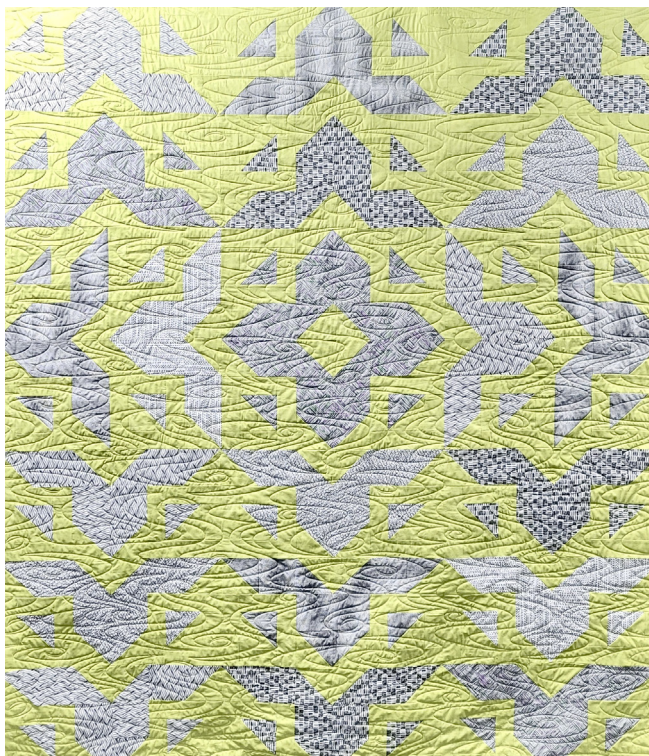


# All Roads



## **Fabric Requirements:**

- 5 coordinating prints:  $\frac{2}{3}$  yd each
- 1 coordinating print:  $\frac{1}{3}$  yd
- Background:  $3 \frac{3}{4}$  yds
- Binding:  $\frac{5}{8}$  yd
- Backing:  $4 \frac{1}{2}$  yds