

PBO

Personalized Blow Out® Smoothing Treatment

This customizable treatment is powered by K-Pure Juice™ and has the ability to define curl, smooth frizz, or straighten hair for up to 3 months.

Why We ♥ it

- Powered by K-Pure Juice™, a proprietary juice blend of keratin, botanicals and amino acids
- Preserves the hair fibers' mechanical strength
- Increases manageability, retains moisture and delivers radiant shine
- Same-day style with zero downtime
- Offers customizable smoothing finishes: Frizz Control, Ultimate Smoothness, Maximum Straightness
- Cumulative results
- Results last up to 3 months
- Clients go home with PicturePerfect Hair Bond Sealing Masque to maintain longevity and effectiveness of the treatment



A customizable treatment that allows you to keep your curl or maximize smooth.



Get social with us and share your before and after transformations
#KERATINCOMPLEX #PersonalizedBlowOut

Client Consultation ▶ A proper client consultation sets you and your client up for success.

1. Assess hair:
 - Texture, porosity and condition
 - Chemical-processing history
 - Client's lifestyle and medical history
2. Assess the client's post-treatment expectations.
3. Review post-treatment and at-home maintenance.
4. Quote price based on hair's length, texture and condition.
5. Perform a patch test.

Instructions

Step 1 of 3 Pre-Treatment Shampoo



1. Shake, measure and pour treatment into a bowl. Shampoo hair twice with Keratin Complex KC PRIMER Shampoo.

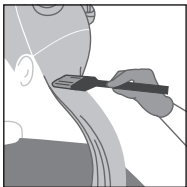
1.5 oz. per application based on texture, porosity and condition of hair.



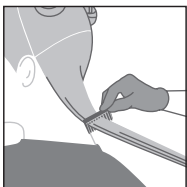
2. Towel-dry hair thoroughly.*

**For Maximum Straightness, blow-dry hair 100% prior to applying treatment.*

Step 2 of 3 Treatment Application



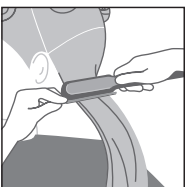
1. Gloves should be worn. Divide the hair into four sections. Starting at the nape of the neck, part damp hair into 1-inch (2.5 cm) subsections. Apply treatment, beginning ¼ inch (.6 cm) from the scalp through to the ends.



2. Continue combing to ensure even distribution, avoiding oversaturation.



3. Cover with a plastic cap. Allow treatment to saturate for 40 minutes.



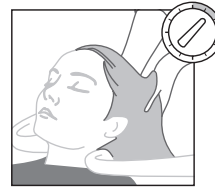
4. Divide the hair into four sections. Blow-dry hair 100% using a vent brush.

5. Divide the hair into four sections. Flat iron ½ to 1-inch (1.25 to 2.5 cm) subsections, following the flat iron guide. Allow hair to cool.

Step 3 of 3 Bond Sealing Masque



1. Rinse treatment for 5 seconds, focus on scalp and hairline. Towel-dry hair.



2. Apply PicturePerfect Hair™ Bond Sealing Masque. Massage into hair and allow to saturate for 5-10 minutes.



3. Rinse thoroughly for 2-3 minutes, concentrating on the scalp.



4. Apply Infusion Keratin Replenisher and desired styling products. Finish as desired.

FLAT IRON GUIDE

FRIZZ CONTROL

4 - 6 passes at 370° - 400° F (188° - 204° C)

ULTIMATE SMOOTHNESS

7 - 12 passes at 400° - 430° F (204° - 221° C)

MAXIMUM STRAIGHTNESS

12 - 16 passes at 430° - 450° F (221° - 232°)

*IMPORTANT: If the client has fine, fragile, white, gray and/or chemically processed hair, flat iron hair at 350° F (177° C) using four to six passes and increase the temperature and number of passes only if necessary. *Some clients who use at-home hair color, direct pigments, changed their hair color or have colored their hair may experience a shift in color. We recommend color on the same day after the masque step of treatment. For further instructions, please see the full training manual. Some clients may notice a faint odor after the first few post-treatment shampoos before the hair is fully dry. Using PicturePerfect Hair Bond Sealing Masque as a conditioner helps minimize the chance of this occurring.*

Aftercare

Same day wash. The client should use PicturePerfect Hair Bond Sealing Masque at home to ensure the longevity and effectiveness of the treatment for up to 3 months.

