

Mont Marte

Easy flower painting in acrylic



I can create

www.montmarte.net



© Mont Marte International Pty Ltd
CAN 101589897

Mont Marte

Materials List

The materials for this lesson can be found at a Gold or above Art Centre.

Go to www.montmarte.net to find your nearest stockist.

CMMD1010 **Mont Marte Double Thick Canvas 101.6cmx101.6cm**

MCG0022 **Mont Marte Tear-off Paper Palette**

MCG0121 **Mont Marte Acrylic Taklon Filbert #24**

MPB0098 **Mont Marte Abstract Expression Brush 50mm**

BMHS0034 **Mont Marte Detailer and Liner Brush Set 5pce**

MPA2504 **Mont Marte Light Moulding Paste**

MAMD0001 **Mont Marte Acrylic Medium Gloss 135ml**

MAXX0024 **Mont Marte Leafing Size 60ml**
MAXX0022 **Mont Marte Imitation Gold Leaf**

PMDA0001 **Mont Marte Dimension Acrylic Titanium White**
PMDA0004 **Mont Marte Dimension Acrylic Naples Yellow**
PMDA0020 **Mont Marte Dimension Acrylic Phthalo Blue**
PMDA0040 **Mont Marte Dimension Acrylic Paynes Grey**
PMDA0030 **Mont Marte Dimension Acrylic Hookers Green**
PMDA0038 **Mont Marte Dimension Acrylic Van Dyke Brown**
PMDA0045 **Mont Marte Dimension Acrylic Pearl Yellow**
PMDA0048 **Mont Marte Dimension Acrylic Pearl Sapphire**

Also Required:

Water

paper towels

Mont Marte

1



1. Drawing up the flower

Refer to the first image and use a graphite pencil to draw the flower up as well as you can. This is a relatively simple design but if you feel more comfortable you can use the grid system and transfer it like that. Draw up the lines so that they are quite dark, this way they will still be visible beneath the tint that we will be applying in the next step.

2



2. Tinting the canvas

All of the paint used in this project is from the Mont Marte Dimension Acrylic range.

Squeeze out some Naples Yellow and a touch of Hookers Green and use a 50mm Abstract Expression Brush to apply a thin coat over the entire surface of the canvas. Dip the brush into clean water and then charge it with paint. This way the paint will flow easier and the coat will be translucent. Make sure that not too much of the Hookers Green is added to the mix as the colour needs to be on the beige side. Let this dry.

Mont Marte

3



3. Painting the background

Squeeze out some Pearl White and Phthalo Blue paint onto the palette. Cut in around the flower, stem and leaves. Don't mix these colours on the palette rather apply the paint on the canvas and mix it directly on the surface. Apply the paint in patches of colour and roughly blend the tones. We do this so that the colour is not too consistent and has an interesting smokey look to it.



If you would like to try this project it is very important to watch the accompanying video to familiarise yourself with the steps as it is very hard to clarify some of them with words. Get into the habit of viewing the work from a distance. There is quite a bit of overlaying of colours so it is helpful to use a hair dryer to dry these colours before you overlay the next tone. This way you don't have to wait around too long.

Mont Marte

4



4. Applying moulding paste

It adds real interest to a painting if it has a 3D quality. A good way to achieve this is with moulding paste. Add the paste over the edge of the petals with a palette knife. Use a modelling tool to cleanly remove the paste from around the petal and then use a damp paintbrush to transition the paste into the petal and to clean up the risen part on the edge of the petal. Use more moulding paste on the petals in the centre of the flower and add less paste on the outer petals. I don't apply any paste to the petals on the rear of the flower. This gives the flower some perspective. Let the moulding paste dry prior to the next step.

Mont Marte

5



5. Painting the petals

All of the petals can be painted in a simple number of steps. Paint 1 petal at a time. Finish a petal then move onto the next one. The steps are outlined below;

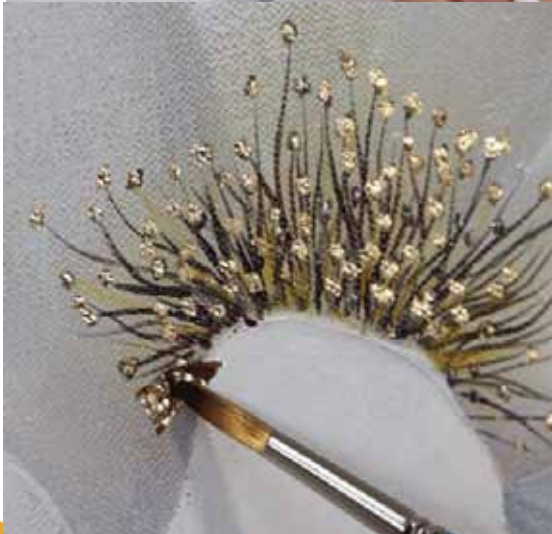
1) Create a mid grey from Titanium White and Paynes Grey and paint the petal in with this tone. Let this dry.

2) Create a translucent white from Titanium White and Gloss medium and paint this over the grey. If you want the colour to be more opaque, let the first tone dry and lay a second coat over it.

3) Paint pure Titanium White onto the edge of the petal.

Mont Marte

6



6. Creating the stamens

The centre of the flower can be created with the following steps:

1) Squeeze out Some Naples Yellow and mix it with a touch of Titanium White. Paint this into the centre of the flower. Keep the brush fairly dry and blend out the the tone as you move outwood into the petals so the tone transitions into the white of the petals.

2) Squeeze out some Naples Yellow and Van Dyke Brown and mix a little water with each colour so that they flow nicely. Use a Fine Liner Brush to create long strokes emitting from the centre of the flower with the Naples Yellow first then create strokes with the Van Dyke Brown over the top.

3) Create dabs of brown on the end of each stamen. Let these dry.

Applying the Gold leaf:

4) Squeez some leafing size out onto the palette and dab it over the brown and dab it on the anthers. Let the size 'tack off'. This will take about 20 minutes.

5) Lay Gold Leafing over the tacked off size.

6) Once all of the leafing is applied use a soft clean brush to remove the excess leafing.

Mont Marte

7

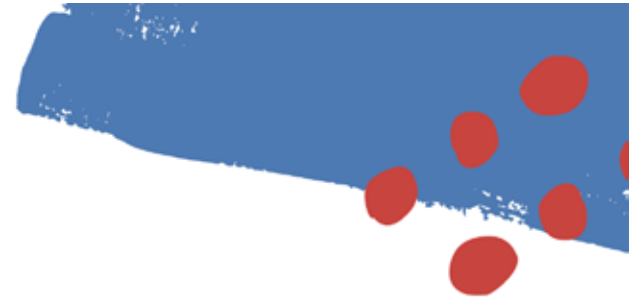


7. Painting the leaves

The flower is finished and the final step is to lay the green in for the leaves and the stems. Squeeze out some Pearl Sapphire and Pearl Yellow onto the palette. Roughly mix the colours to make a green.

Refer to the second image in the PDF and start to lay in the greens. I create any greens that are in highlight with more yellow in them and any areas of green in shadow with more blue.

Mont Marte



Mont Marte

