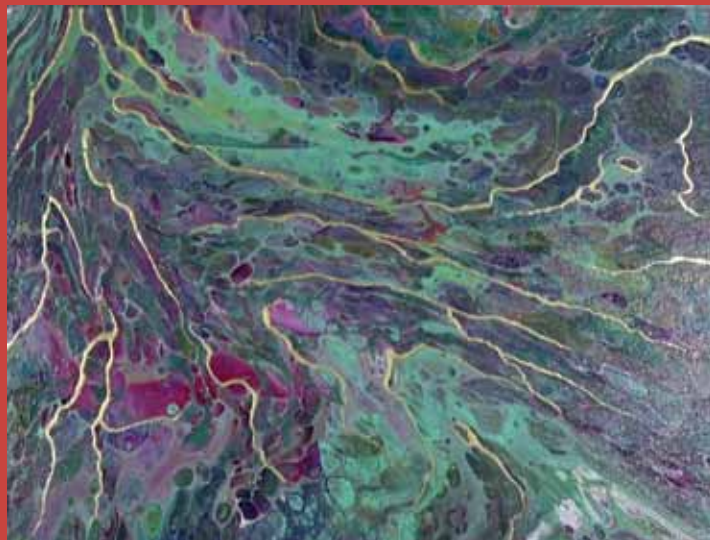


Mont Marte

Easy DIY fluid art: Special effects



I can create

www.montmarte.net



© Mont Marte International Pty Ltd
CAN 101589897

Mont Marte

Materials List

The materials for this lesson can be found at a Gold or above Art Centre.

Go to www.montmarte.net to find the one nearest to you.

- PMPP2001 Mont Marte Silver Foll Paint 20ml
- PMPP2002 Mont Marte Gold Foll Paint 20ml
- PMPP6004 Mont Marte Iridscente Varnish 240ml
- MPB0056 Mont Marte Taklon Flat Wide 75mm
- BMHS0034 Mont Marte Detail & Liner Set 5pce

Also required:

drop sheet
Corn flour (If silicone oil was used in pouring to be over painted)
Washing up Liquid



1



Cleaning the silicone oil off the surface of a painting

1. Corn flour

Silicone oil is great for creating cells in pour paintings but once the painting has dried some of the residue will remain sitting on the surface. If you intend to add additional areas of paint or apply a varnish then this residual silicone oil needs to be removed.

The first step to do this is to liberally sprinkle some corn flour over the surface of the painting. Use a clean stiff bristle brush like an oil painting brush and scrub the corn flour into the surface of the painting. Create small circular movements with the brush. The corn flour will act like a sponge and soak up the oil.

Next use a dust pan and brush and remove the corn flour.

2



2. Final clean

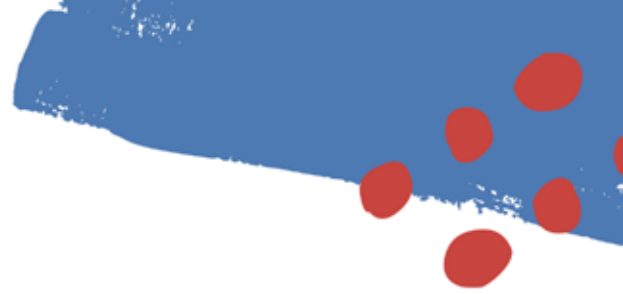
Once the majority of the corn flour and silicone oil have been removed fill a bowl with warm water and squeeze in some dishwashing liquid and use a sponge to clean the surface.

Feel the surface of the painting and if you feel that some silicone still remains, repeat the process until no oil can be felt.



Fluid art can be messy so ensure all of your surfaces are covered with some sort of drop sheet.

Mont Marte



1



Silver Foil after effects

1. Applying the foil paint

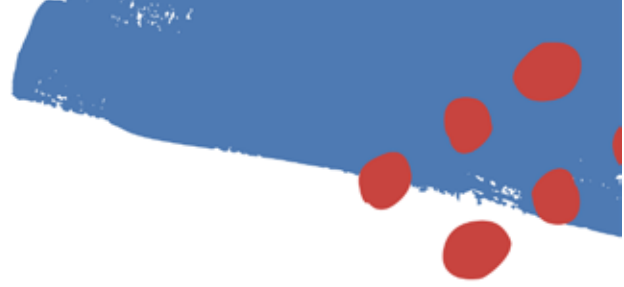
Mont Marte Foil Paint is a very heavily pigmented metallic paint. It is used in this case to detail and add interest to a dry previously created pour painting.

The paint is best applied with a rigger or a liner brush. These brushes have longer bristles and will hold more paint allowing for a longer and smoother paint application.

The paint is applied in thin passages into areas where differing colours meet or into any interesting paint formations that you might like to highlight.



Mont Marte



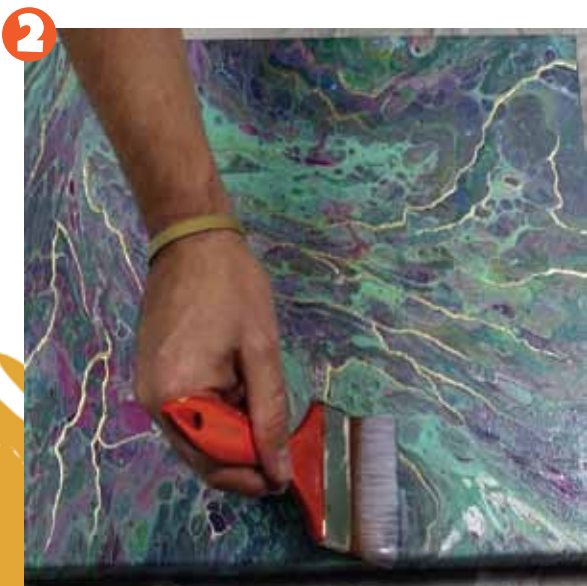
Gold Foil and Iridescent Varnish after effects

1. Applying the gold paint

Mont Marte Foil Paint is a very heavily pigmented metallic paint. It is used in this case to detail and add interest to a dry previously created pour painting.

The paint is best applied with a rigger or a liner brush. These brushes have longer bristles and will hold more paint allowing for a longer and smoother paint application.

The paint is applied in thin passages into areas where differing colours meet or into any interesting paint formations that you might like to highlight.



2. Applying the Iridescent varnish

If you are varnishing over anything it needs to be fully cured.

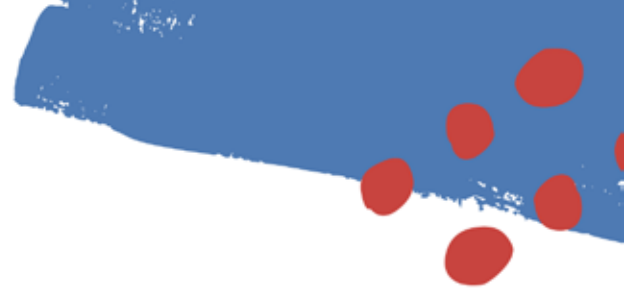
Varnish should be applied with a soft brush preferably of a larger size. I used a 75mm wide artist taklon brush.

Squeeze some Iridescent Varnish out onto a disposable plate. Dip the brush into the varnish and lay a stroke across the top of the canvas. Lay another stroke beneath the first but overlap it slightly. Continue down the canvas until the canvas is fully covered. Let this dry.

If you want the iridescent effect even stronger you can lay another layer of varnish on.



Mont Marte



Mont Marte

