

# How to Paint an Abstract City



Painting

Easy

12+

Welcome to another Mont Marte art lesson. Today we shall learn how to paint an abstract cityscape. So grab your Mont Marte Art materials and...

Let's get into it!



### Material List

- CMMD6090 Double Thick Canvas 60 x 121 cm
- MPB0055 Wide Artist Taklon 50 mm
- MPB0011 Taklon Angle # 12
- MAXX0019 Plastic Brush Washer
- PMDA0001 Dimension Acrylic 250ml Titanium White
- PMDA0005 Dimension Acrylic 250ml Lemon Yellow
- PMDA0011 Dimension Acrylic 250ml Permanent Red
- PMDA0008 Dimension Acrylic 250ml Orange
- PMDA0016 Dimension Acrylic 250ml Purple
- PMDA0019 Dimension Acrylic 250ml Ultramarine
- PMDA0027 Dimension Acrylic 250ml Monastral Green
- PMDA0041 Dimension Acrylic 250ml Lamp Black

### Step 1: Tinting the Canvas

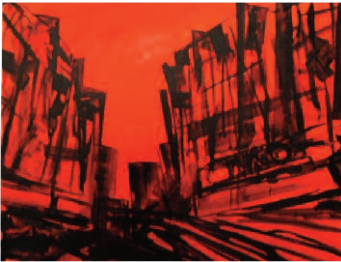


Use the 50mm Wide Taklon Brush to tint the Canvas using the Orange and the Permanent Red. Try to use them in equal proportions over the entire surface. Let this coat dry before moving to the next step.



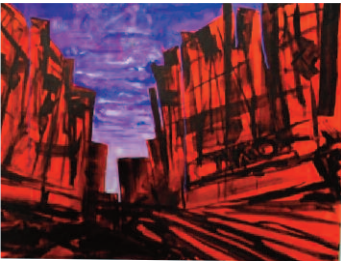
***A good looking painting does not have to be realistic!***

### Step 2: Black Drawing



Refer to the image provided on the last page of this PDF and mark up the profile lines around the buildings and street with your #12 Angle Brush. Dry brush in the buildings and then allow this to dry before moving to the next step.

### Step 3: Sky



Charge the 50mm Wide Brush with Purple and lay this in to the sky area above the buildings. As you move down the Canvas add a little White to the Purple so it is lighter at the bottom. Lay in some horizontal clouds in Ultramarine and then some thin Purple lines nearer the bottom of that sky area.

### Step 4: White



In this stage we apply White blocks everywhere that will be a bright colour with the Angle Brush. Refer to the image of the finished painting to get an idea of where they lay. The amount of lights you put in is up to you, but the more you put in the busier your city will look. Dry brush around the street area as well, this will suggest street lighting.



### Step 5: Adding Colours

Now we can lay colour over the blocks of White. I am using Lemon Yellow, Permanent Red, Ultramarine Blue and Monastral Green. The detail of each sign can be suggested with a series of strokes. The painting will really come alive with these splashes of colour.



### Step 2: Detailing

Lastly, using the Angle Brush we add our Black to key line any important areas like the edges of the buildings, signs and any lettering.

Until next time...

*Keep on Painting*

