

White Rose



Painting

Intermediate

12+

In this lesson we will be learning how to blend and create the form of a rose in Acrylic Paint. So grab your Mont Marte Art materials and...

Let's get into it!



Material List

CMMD7575
MPA0032
MAPL0002
MAXX0019
MAMD0001
MPN0026
MCG0059
MPB0059
MPB0011
MCG0123
MPB0040
PMDA0001
PMDA0004
PMDA0005
PMDA0020
PMDA0029
PMDA0041
PMDA0010

Mont Marte Canvas 75 x 75 cm
Mont Marte Gesso
Mont Marte Easy Clean Wood Palette
Mont Marte Brush Washer Plastic
Mont Marte Acrylic Medium Gloss
Mont Marte Drawing Set 8 pce
Mont Marte Palette Knife #4
Mont Marte Taklon Brush 75 mm
Mont Marte Taklon Angle # 12
Mont Marte Taklon Liner 2/0
Mont Marte Long Handle Gesso Brush
Mont Marte Dimension Titanium White
Mont Marte Dimension Naples Yellow
Mont Marte Dimension Lemon Yellow
Mont Marte Dimension Phthalo Blue
Mont Marte Dimension Sap Green
Mont Marte Dimension Lamp Black
Mont Marte Dimension Brilliant Red





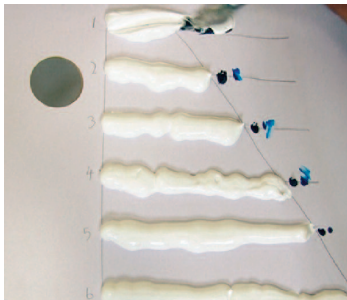
Step 1: Preparing the Canvas

Prepare the Canvas by giving it an even coat of Gesso with the Gesso Brush and allow it to dry. Then onto your Palette, squeeze out 1 part Lemon Yellow to 1 part Naples Yellow and paint a thin layer over the canvas with the 75mm Taklon Brush. You can paint the background any colour you like.



Step 2: Drawing the Rose

Draw the Rose with an 8B Pencil, include the shadow lines as well. Refer to the image on the last page of this PDF for guidance.



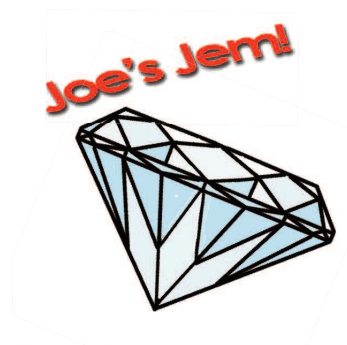
Step 3: Mixing the Paint

To paint the rose you will need to create six different shades. On the palette draw a right angle with 5 horizontal lines emitting from the vertical axis. Now measure 150 mm along from the top line and draw an angled line to the end of the bottom line. Squeeze out Titanium White along each horizontal line up to where it intersects the diagonal line. Then add 2 spots of Lamp Black to line 1, 1 spot to line 2, half a spot to lines 3, 4 and 5. Then lay a spot of Phthalo Blue on lines 1-5 and mix all these colours with the palette knife.



Step 4: Adding Tones

A paint by numbers guide for your reference has been provided on the last page of this PDF. Paint the rose petal by petal, using the Taklon Angle Brush and remember to blend one tone at a time, so that you can get a smooth transition before the paint dries.



To keep the paint active and make your blending easier, give the area you are painting a spritz of water from a spray bottle.



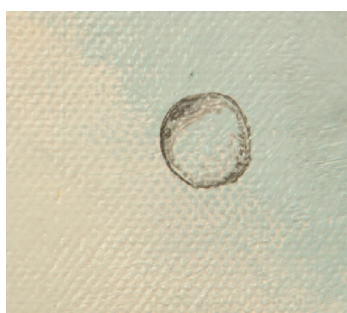
Step 5: Adding Greens

Paint in the stem and sepals in Sap Green. Then add Phthalo Blue to the Sap Green and paint that into the areas of shadow.



Step 6: Applying a Glaze

Create a mix of 3 parts Lemon Yellow, 1 part Brilliant Red and 5 parts Gloss Medium. Apply this mixture over the Yellow background with the 75 mm Taklon Brush.



Step 7: Adding Water Droplets

To paint a water droplet, mix a Mid Grey from Titanium White and Lamp Black. Then using your Taklon Liner Brush paint a small circle. Feather the inside of the circle so it fades in the middle. Shade the top and bottom of the circle with a darker Grey and highlight the top with White. Until next time...

Keep on Painting

