

How to Paint Abstract Flowers



Painting

Easy

8+

Hello there and good on you for checking out this lesson, because this one is all about fun! In this project we will be letting the paint do most of the work. So grab your Mont Marte Art materials and...

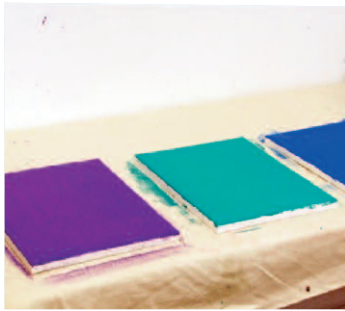
Let's get into it!



Material List

| | |
|----------|--------------------------------------|
| CSST4050 | Mont Marte Single Thick Canvas |
| MAMD0001 | Mont Marte Acrylic Medium Gloss |
| MAPL0003 | Mont Marte Deep Well Plastic Palette |
| MAXX0019 | Mont Marte Brush Washer Plastic |
| MPB0056 | Mont Marte Taklon Flat Wide 75 mm |
| MPB0038 | Mont Marte Taklon Rigger #3 |
| MPB0011 | Mont Marte Taklon Angle # 12 |
| PMDA0001 | Titanium White |
| PMDA0006 | Medium Yellow |
| PMDA0008 | Orange |
| PMDA0011 | Permanent Red |
| PMDA0016 | Purple |
| PMDA0017 | Violet |
| PMDA0019 | Ultramarine Blue |
| PMDA0020 | Phthalo Blue |
| PMDA0023 | Monastral Cerulean |
| PMDA0024 | Turquoise |
| PMDA0027 | Monastral Green |
| PMDA0042 | Gold |





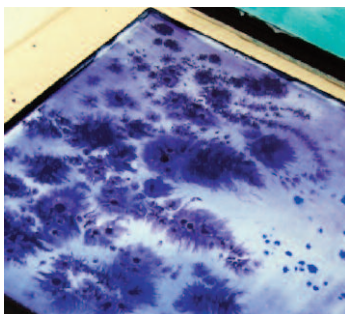
Step 1: Painting a Base Coat

Paint one Canvas Violet, one Monastral Cerulean and one Turquoise using the 75 mm Taklon Brush. Allow them to dry before moving to the next step.



Step 2: Preparing the Canvas

Apply electrical tape around the edge of each Canvas, letting 1cm hang over the edge to create a barrier to hold the paint. Now squeeze out a teaspoon of every colour except Gold, White and Violet into the Deep Well Plastic Palette. Then add 4 Tablespoons of water to each colour. Dollop Gloss Medium and 4 Tablespoons of water onto each Canvas and spread it evenly out with the 75 mm Wide Artist Brush.



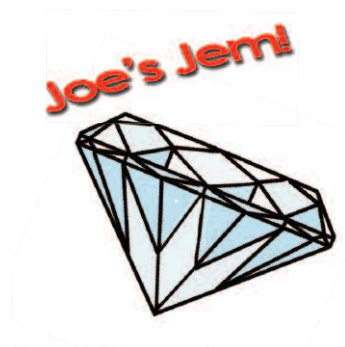
Step 3: Applying the Topcoat

Drop different colours onto each Canvas using a Brush. There are really no rules regarding what colours to use or how much to use, but I am using Purple, Ultra Marine and Yellow on The Violet Canvas. Turquoise, Permanent Red and Orange on the Turquoise Canvas and on the Blue Canvas I am using Phthalo Blue, Monastral Blue and Monastral Green. Allow the paint to dry before moving to the next step.

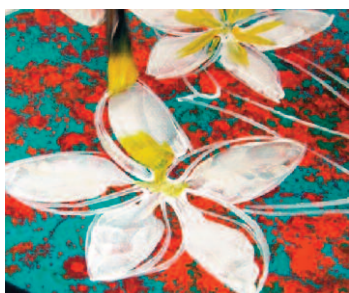


Step 4: Outlining the Flowers

Using a Rigger Brush, draw the flower outlines on each of your Canvases. I have used Orange for the Hibiscus, White for the Frangipani and Red for the Poppies. There are three flower designs provided on the last page of this document for your reference.



Learn colour theory so you can disregard colour theory.



Step 5: Painting the Flowers

- 1) With the # 12 Angle Brush, paint the Hibiscus in Orange and blend a little Yellow into the centre. Then paint the leaves with Monastral Green. Now mix Orange and Green in equal proportions, this will create a brown and paint that onto the tree branch.
- 2) Paint in the Frangipani with Titanium White and paint a little Yellow in the centre. Use the same Brown mix to paint the tree branch.
- 3) Now paint in the Poppies with Permanent Red and spot Black into the middle of each flower to represent a stamin.



Step 6: Applying the Gold Paint

Take a tube of Gold and with a pair of scissors cut off the hanging tab on the bottom. Then cut off the corner of the tube to create a small opening for the paint to flow through. Now gently squeeze the tube like a piping bag to apply a bead of paint around the outline of each of the flowers.



Until next time...

*Keep on
Painting*

