

Category: Watercolour

# Fairy Wren



AGE  
12+

LEVEL  
Intermediate

In today's lesson we will be exploring Mont Marte Watercolours and learning some great techniques by painting a simple image of a Fairy Wren.

So grab your Mont Marte art materials and ...



**Material List**

<b>MCG0038</b>	Mont Marte Watercolour Paints
<b>MSB0065</b>	Mont Marte Watercolour Paper Pad A3 300gsm
<b>MCG0008</b>	Mont Marte Oval Plastic Palette
<b>MAA0011</b>	Mont Marte Sketch Board w/clips Large
<b>MSB0015</b>	Mont Marte Tracing Paper Pad A3
<b>MPB0016</b>	Mont Marte Squirrel Traditional Squirrel Mop Brush
<b>MPB0055</b>	Mont Marte Taklon Flat Wide Brush 50mm
<b>MPN0026</b>	Mont Marte Drawing Set

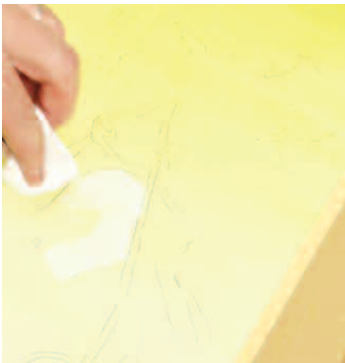
**You will also need**

Water  
Tissues



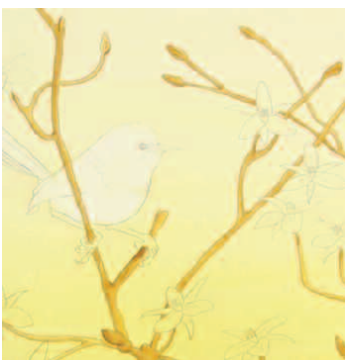
### Step 1: Drawing

On the last page of this PDF you will find the line drawing for this lesson, you can draw your own design or transfer the image provided on to the Watercolour Paper using the Tracing Paper.



### Step 2: Background Wash

Turn your drawing upside down. Then using the 50mm Taklon Brush, apply a strip of Medium Yellow along the top of the paper. Dampen your brush and move it back and forth down the Paper, continually adding more water as you go. By the time you reach the bottom of the page there should be almost no pigment. Then before the wash dries, pad out the pigment inside the bird with a tissue.



### Step 3: Layering Brown Washes

Using watered down Ochre, paint in all of the stalks. Then paint  $\frac{3}{4}$  of the stalks with a mixture of 1 part Ochre and 1 part Umber. Finally paint the shadow side of the stalks with the pure Umber.



### Step 4: Dropping in Colour

With clean water paint in a flower. While this is still wet drop in Brilliant Red around the edge and leave in to dry. Then paint over the entire flower with a light wash of Phthalo. Paint the centre of each flower in Sap green then pad it with a tissue to remove the excess pigment.



### Step 5: Layering Washes and Texture

Create a watery Phthalo and paint in the entire bird. Then build up layers of Ultramarine, darkening around the edges to make it look 3D. Create a watery mix of Crimson and glaze it over the Ultramarine, this gives it warmth. Finally lay in the Black markings.



### Step 6: Detailing

Paint in the legs with a dirty grey made from Medium Yellow, Brilliant Red and Black in equal Parts. Paint in the primary feathers and eye with pure Black. Lastly paint Chinese White on areas of the legs and on the eye as an extra highlight.

Until next time...

*Keep on  
Painting*

