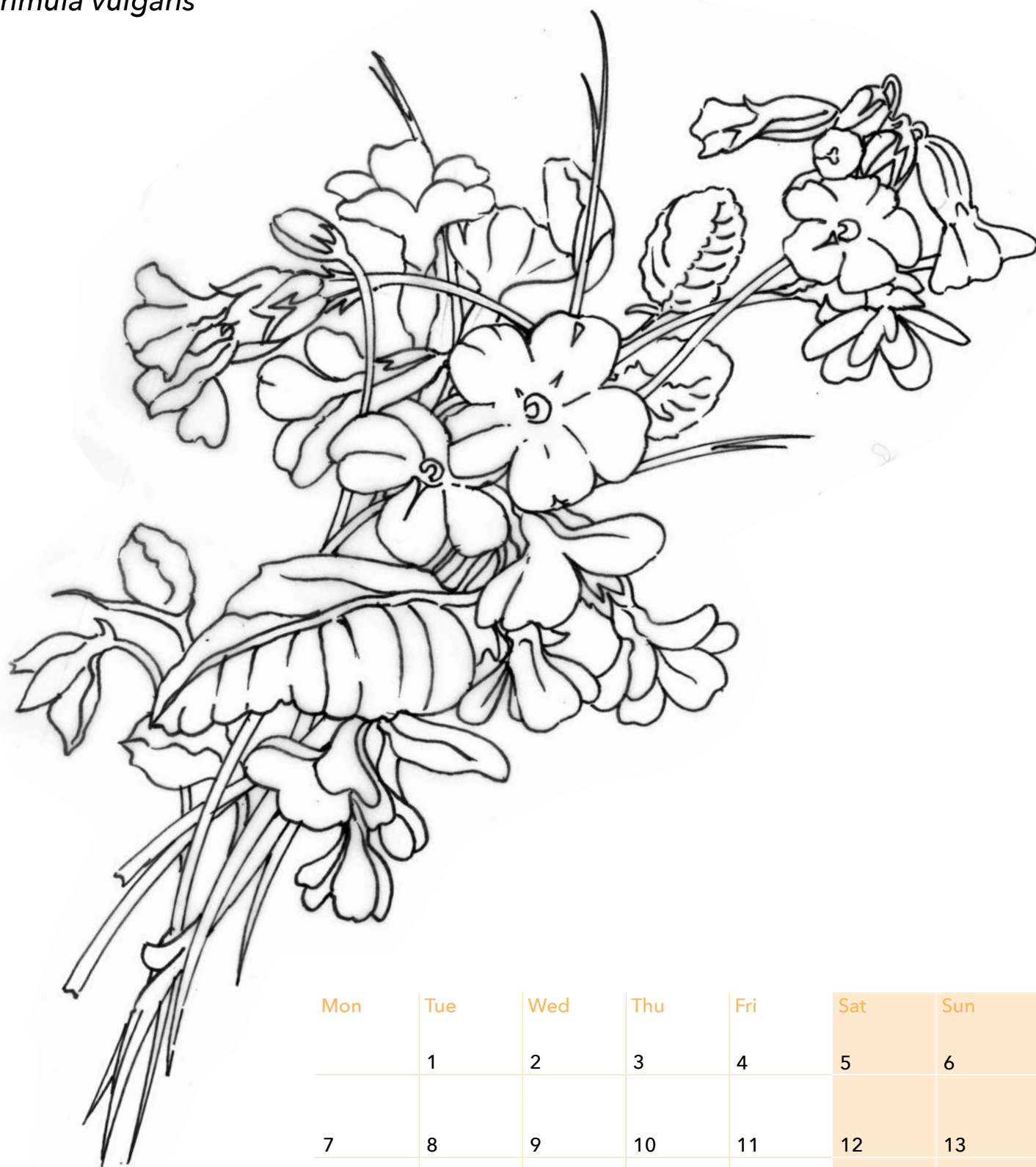


## Birth Flower: Primrose

*Primula vulgaris*



Mon	Tue	Wed	Thu	Fri	Sat	Sun
	1	2	3	4	5	6
7	8	9	10	11	12	13
14	15	16	17	18	19	20
21	22	23	24	25	26	27
28						



# How to colour in your Primroses, Birth Flower for February, in 5 easy stages

castlearts.com #castlearts

## STAGE 1

We begin this bright bouquet with the linework, adding gradual layers to build up colour and tone as we go.



## STAGE 2

First we add a colour base of yellows and golds to add tone to the petals and leaves, with a little defining shade.



## STAGE 3

Next we build up the drawing with further layers, adding green to the leaves and stems, and applying darker tones to increase the density.



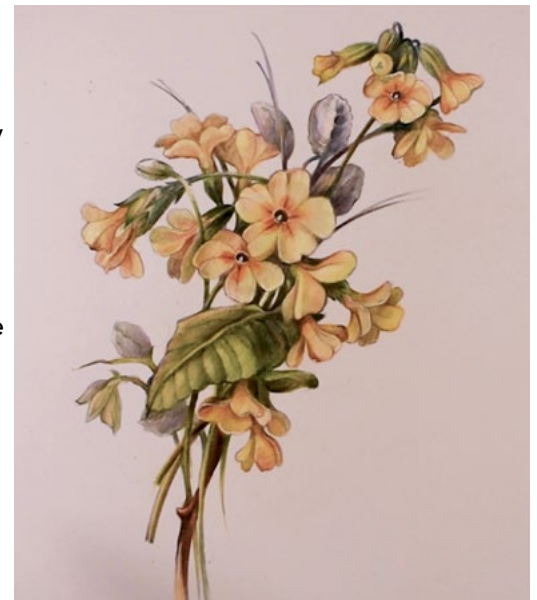
## STAGE 4

Now an all-over splash of colour and deepening shade to add some vitality to this pretty bouquet.



## STAGE 5

We're nearly there! After some subtle blending and final details these February Primroses are ready to bloom.



# Birth Flower: February



## Your Primroses colour reference

The pale yellow flowers of the Primrose are always a sure sign that Spring is not too far away. Look out for the pretty, creamy-yellow petals in woodlands and grasslands.

A hardy little plant, the Primrose can flower from as early as December in mild years, appearing all the way through the spring until May.



### The colors used to create this drawing:

001 Lemon Yellow Light	028 Aubergine	063 Oxide of Chrome
002 Primrose Yellow	036 Lavender	064 Terre Verde
004 Cadmium Yellow Light	042 Prussian Blue	068 Burnt Umber
009 Cadmium Yellow	045 Indigo Light	071 Ivory Black
010 Yellow Ochre Light	046 Sky Blue	072 Titanium White
012 Cinnamon	053 Chrome Green	073 Naples Yellow Light
018 Flesh Deep	054 Hooker's Green	119 Cadmium Green Pale
026 Chinese Orange	056 Juniper Green	