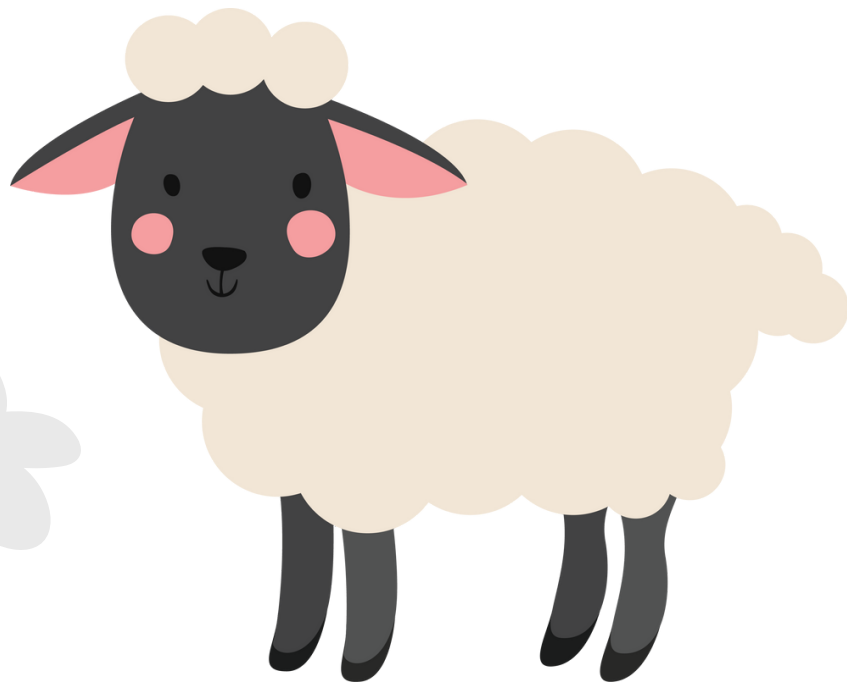
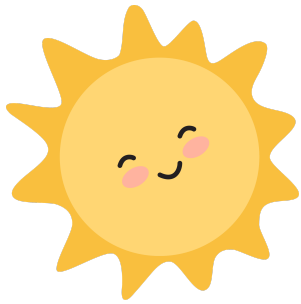


Click to  
print me!

# Fingerprint Sheep

Suitable For 3+ Years



Let's  
CREATE



# What You Will Need:

- White Paint
- Coloured Paints (If you don't have white)
- Cotton Wool Balls
- Black Card or Black Paper
- Glue
- Googly Eyes
- Scissors

## Step By Step Guide:

1. Start by cutting out 4 strips for the sheep's legs - with a parent or guardian supervision!
2. Glue the legs onto the piece of card
3. Place a small amount of white paint into a pot
4. Get your child to dip their finger into the white paint and push down on the paper
5. If you have cotton wool balls you can add these on top to add texture
6. Cut out a tail and a face from the black card
7. Glue to the sheep and add the googly eyes to complete your sheep

Don't forget to have fun and make sure to tag us @jaquesoflondon on Instagram so we can see your wonderful creations!

