

ERGOPLAN EP1

WORKING AND ASSEMBLY TABLE EP1 | FH



PAYLOAD
up to 400 kg



PLATE SIZE
1,785 x 850 x 120 mm
(including tongs)



OVERALL HEIGHT
max. 1,080 mm

The ergonomic work and assembly table ErgoPlan EP1 is equipped with a workbench top made of selected and solid red beech wood. The surface is waxed and polished. The stepless height adjustment under load is even and precise – even with asymmetrical load on the plate.

Workbench top without pliers	1,700 x 640 x 120 mm
2 pliers wrenches: Front tong made of solid cast / steel construction, rear clamp robust aluminum box guide (with adjustable guide prism and plastic slide guide)	
Board thickness	120 / 60 mm
Useful stroke	300 mm
Construction height ErgoPlan	780 mm
Weight of the workbench top	approx. 95 kg
Weight	approx. 240 kg

The cover attached to the rear serves as a crush protection cover

The lifting unit is concealed in the left lifting column and is therefore protected from dirt and damage

ART.: 211,100.00

OPTIONAL
Round bench hook
ART.: 211.201.30
ART.: 211.205.30

BANK HOOK

Our ErgoPlan with workbench has optionally over four practical and versatile Bench hook for tensioning or as a Support of long workpieces.

STEPLESS AND UNDER LOAD HEIGHT ADJUSTABLE WITH THE HELP OF FOOT HYDRAULICS



HOW YOU CAN BENEFIT FROM IT AS A SCHOOL:

- + Different student sizes (height)
- + Conveying awareness of ergonomics and acting as a role model
- + Maintenance-free functionality results in permanent cost savings
- + Longevity through high-quality construction, robust construction, innovative planning and service if required
- + Future-oriented equipment as an appreciative employer
- + Mobile use thanks to the chassis with rollers and lifting / lowering device, as well as stationary on stable adjustable feet

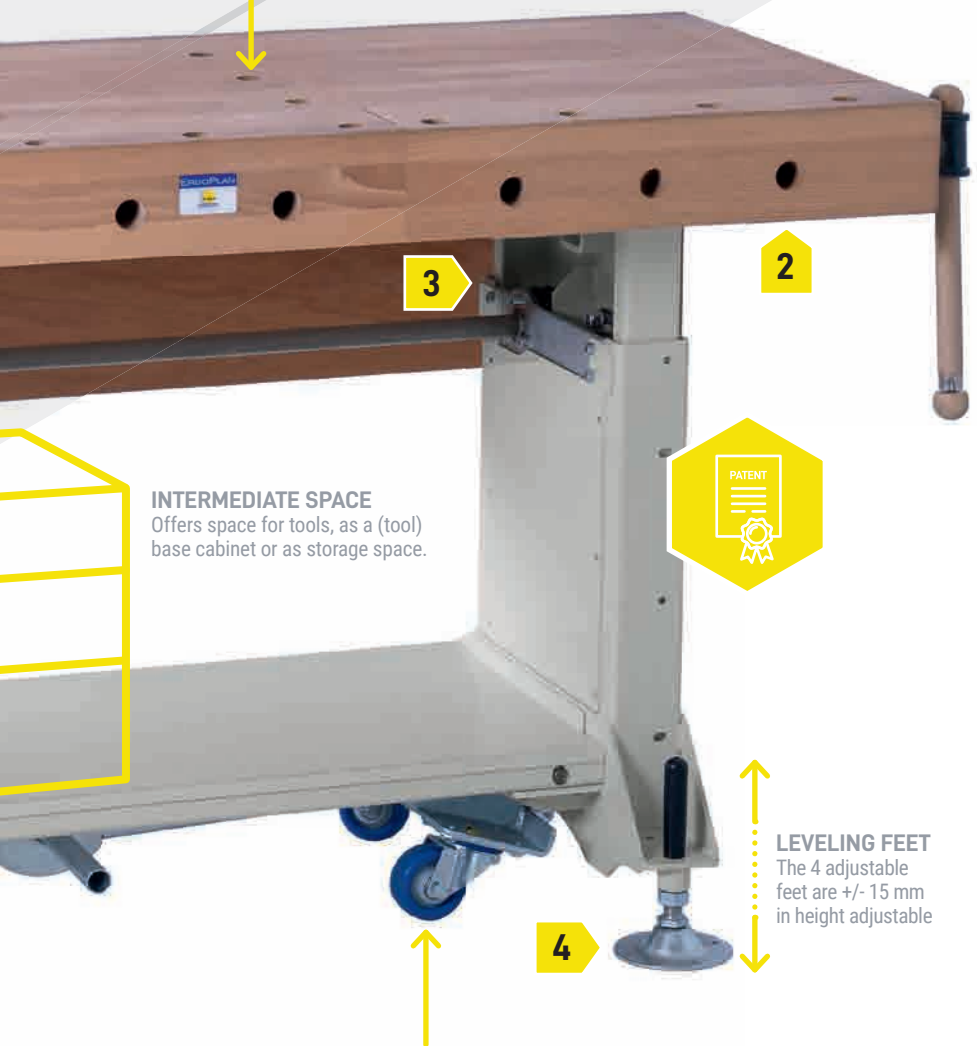
ERGONOMY
 ANYONE WHO IS FORCED TO WORK IN AN UNHEALTHY POSTURE DURING TRAINING RISKS SUFFERING FROM BACK PROBLEMS OR OTHER DAMAGE TO THE MUSCULOSKELETAL SYSTEM IN LATER YEARS, AS WELL AS LOSING MOTIVATION FOR THE JOB.



Scan the QR code and watch user video:
<https://youtu.be/TPzBGVKryug>

DRILLING

Vertical and horizontal holes in the plate and in the pliers with \varnothing 30 mm for flexible work with bench hooks.
 The holes in the plate and in the front pliers are in a grid of 160 x 320 mm.
 The holes in the rear jaws are in a 160 mm grid, horizontal holes on the front side in a 150 mm grid.



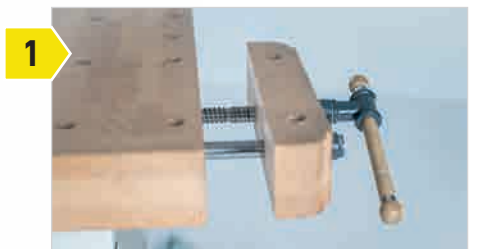
INTERMEDIATE SPACE
 Offers space for tools, as a (tool) base cabinet or as storage space.



LEVELING FEET
 The 4 adjustable feet are +/- 15 mm in height adjustable

FOLD-OUT DRIVING DEVICE
 Our ErgoPlan offers a fold-out driving device attached to the base frame, which can be folded in and out by means of a hand lever. It lifts the ErgoPlan by approx. 15 cm and thus makes it mobile. Your new ErgoPlan thus offers a stationary working position and can also be used on the move in next to no time.

HIGHLIGHT THAT MAKES THE ERGOPLAN PARTICULARLY:



1 Workpieces can be clamped against the table with the help of the front gripper.



2 With the rear clamp, workpieces can also be clamped with bench hooks.



3 Quiet running despite high payload – the future-oriented workbench.



4 The feet can be adjusted in height to compensate for uneven surfaces.

ERGOPLAN EP2

WORK AND ASSEMBLY TABLE EP2 | FH



PAYLOAD
up to 400 kg



PLATE SIZE
1,785 x 850 x 120 mm
(including pliers)



OVERALL HEIGHT
max. 1,080 mm

Our stationary, ergonomic work and assembly table ErgoPlan EP2 is equipped with a workbench top made of robust, solid beech wood. The surface is waxed and polished. The stepless height adjustment under load is even and precise – even with asymmetrical load on the plate.

Workbench top without pliers 1,700 x 640 x 120 mm

2 pliers wrenches:
Front clamp made of solid cast / steel construction, rear clamp robust aluminum box guide (with adjustable guide prism and plastic slide guide)

Board thickness 120 / 60 mm

Useful stroke 300 mm

Construction height ErgoPlan 780 mm

Weight der workbench top approx. 95 kg

Weight approx. 210 kg

The cover attached to the rear serves as a protective cover against scissors and as a protection against crushing.

The lifting unit is concealed in the left lifting column and is therefore protected from dirt and damage.

ART.: 211.110.00

OPTIONAL
Round bench hook
ART.: 211.201.30
ART.: 211.205.30

BANK HOOK

Our ErgoPlan with workbench has optionally over four practical and versatile Bench hook for tensioning or as a Support of long workpieces.

STEPLESS AND UNDER LOAD HEIGHT ADJUSTABLE WITH THE HELP OF FOOT HYDRAULICS



ERGONOMY
 ANYONE WHO IS FORCED TO WORK IN AN UNHEALTHY POSTURE DURING TRAINING RISKS SUFFERING FROM BACK PROBLEMS OR OTHER DAMAGE TO THE MUSCULOSKELETAL SYSTEM IN LATER YEARS, AS WELL AS LOSING MOTIVATION FOR THE JOB.



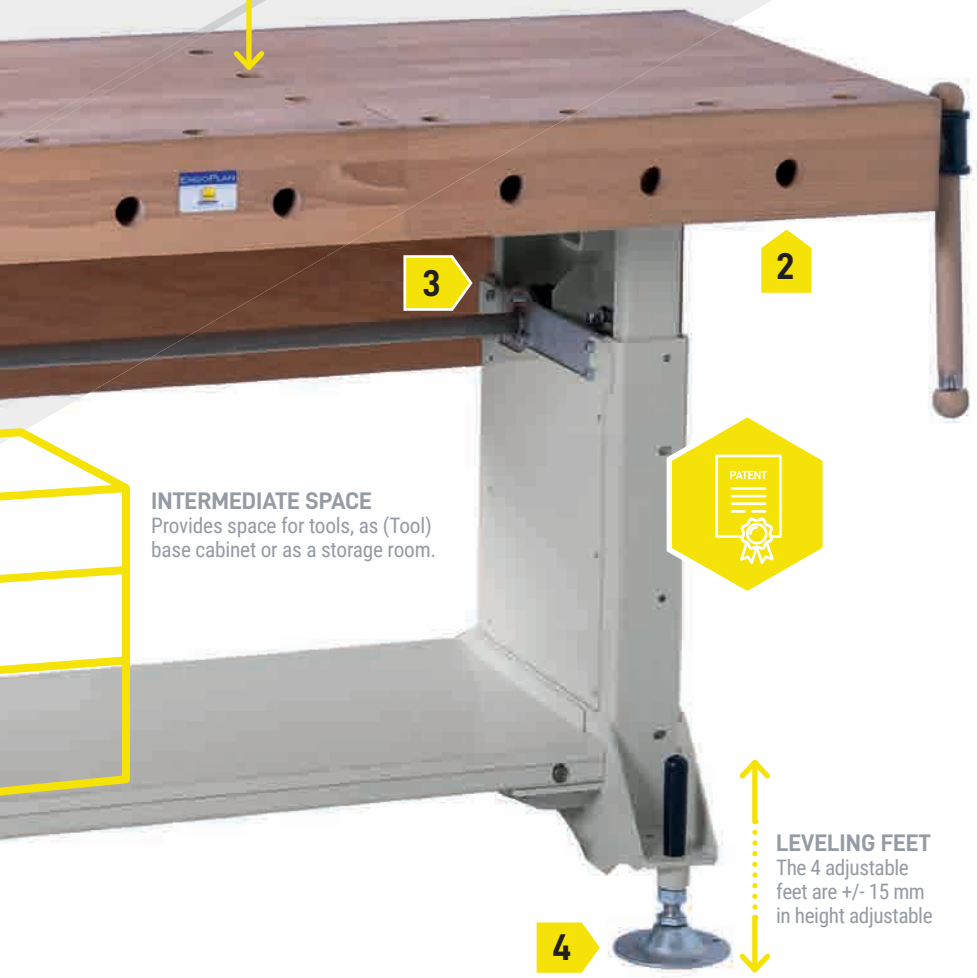
Scan the QR code and watch user video:
<https://youtu.be/TPzBGVKryug>

DRILLING

Vertical and horizontal holes in the plate and in the pliers with \varnothing 30 mm for flexible work with bench hooks.

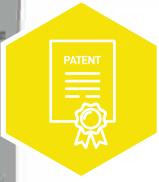
The holes in the plate and in the front pliers are in a grid of 160 x 320 mm.

The holes in the rear jaws are in a 160 mm grid, horizontal holes on the front side in a 150 mm grid.



INTERMEDIATE SPACE

Provides space for tools, as (Tool) base cabinet or as a storage room.



LEVELING FEET

The 4 adjustable feet are +/- 15 mm in height adjustable

HIGHLIGHT

WHAT MAKES THE ERGOPLAN SPECIAL:



Workpieces can be clamped against the table with the help of the front gripper.



Workpieces can also be clamped with bench hooks using the rear clamp.



Quiet running despite high payload – the future-oriented workbench.



The height of the feet can be adjusted to compensate for uneven surfaces.

ERGOPLAN EP3

WORK AND ASSEMBLY TABLE EP3 | FH



PAYLOAD
up to 500 kg



PLATFORM SIZE
for workbench tops
up to max. 2 m in length



OVERALL HEIGHT
max. 970 mm

You can flexibly equip our stationary, ergonomic work and assembly table ErgoPlan EP3 with your existing workbench top. The stepless height adjustment under load takes place evenly and precisely – even with asymmetrical loads on a plate.

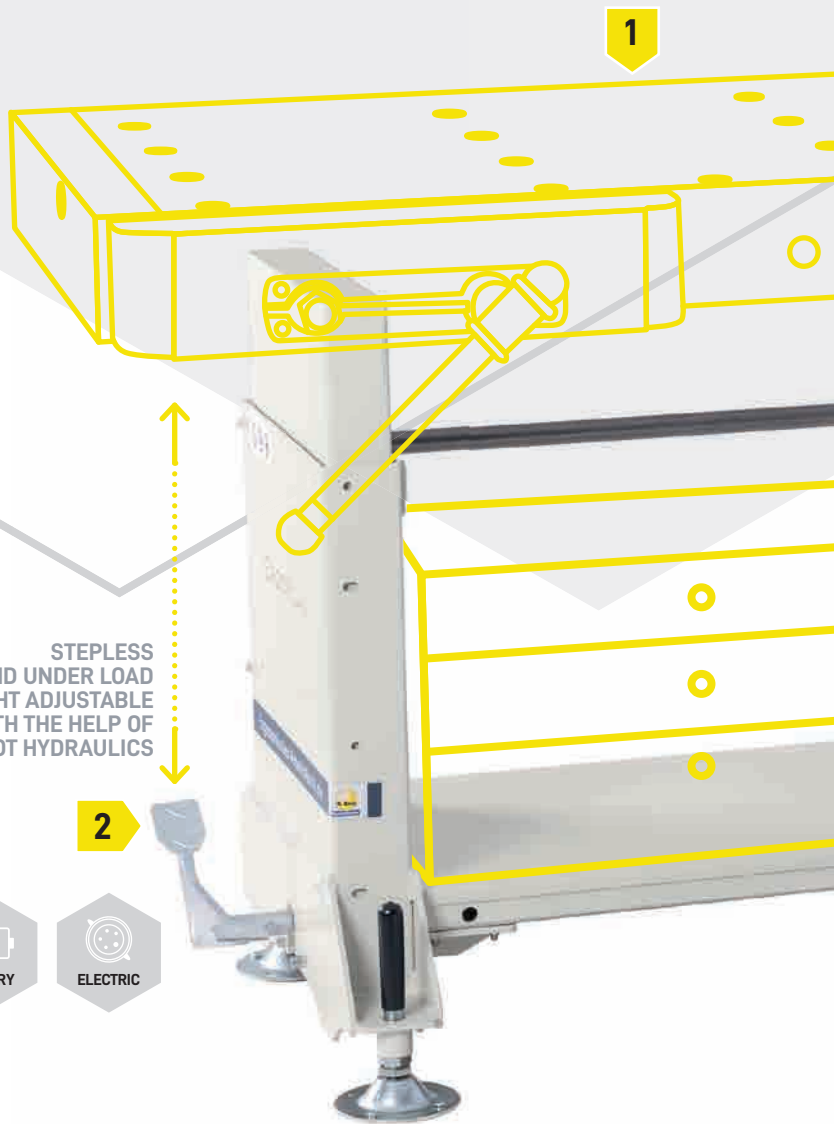
Useful stroke	300 mm
Construction height ErgoPlan	670 mm
Weight	approx. 130 kg

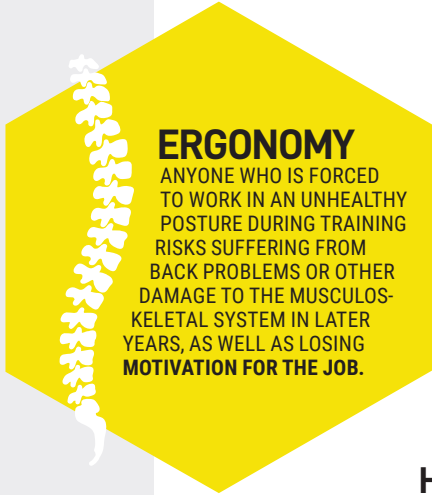
The lifting unit is concealed in the left lifting column and is therefore protected from dirt and damage.

When ordering, please let us know the dimensions of your existing bench top.

ART.: 211.120.00

STEPLESS
AND UNDER LOAD
HEIGHT ADJUSTABLE
WITH THE HELP OF
FOOT HYDRAULICS



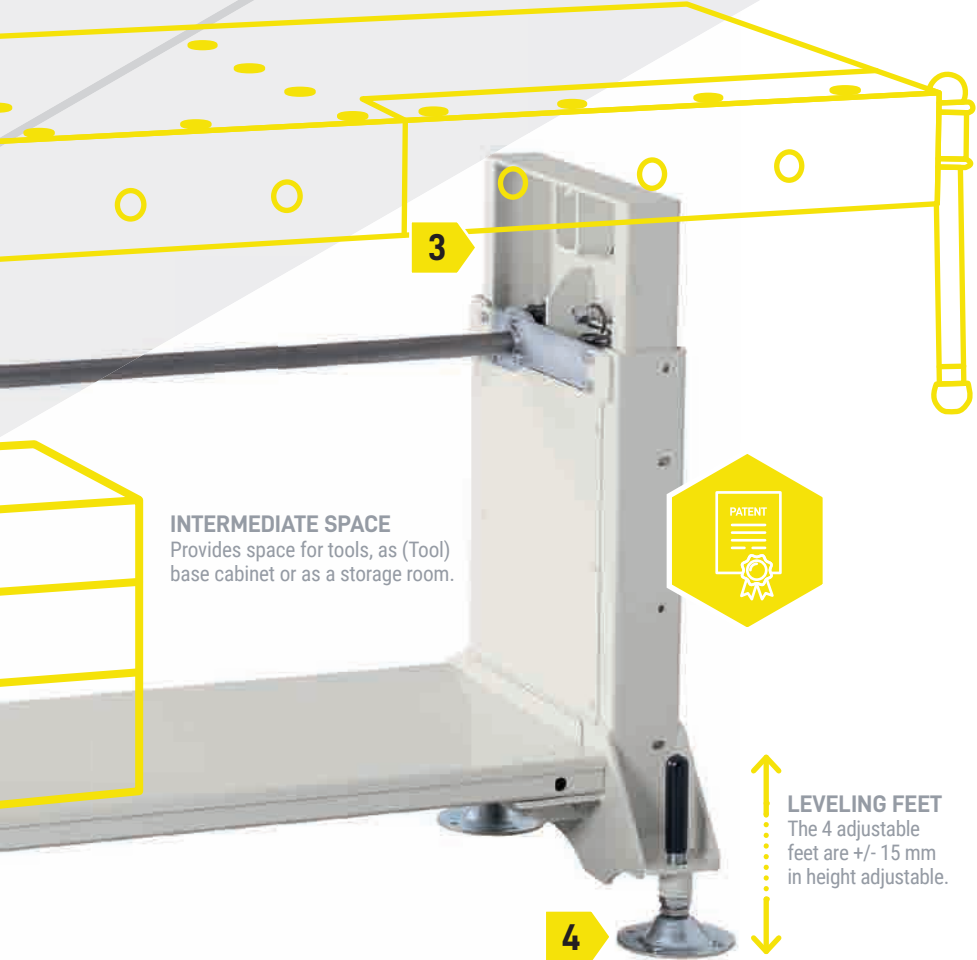


ERGONOMY
 ANYONE WHO IS FORCED TO WORK IN AN UNHEALTHY POSTURE DURING TRAINING RISKS SUFFERING FROM BACK PROBLEMS OR OTHER DAMAGE TO THE MUSCULOSKELETAL SYSTEM IN LATER YEARS, AS WELL AS LOSING MOTIVATION FOR THE JOB.



Scan the QR code and watch user video:
<https://youtu.be/TPzBGVKryug>

HIGHLIGHT
 WHAT MAKES THE ERGOPLAN SPECIAL:



INTERMEDIATE SPACE
 Provides space for tools, as (Tool) base cabinet or as a storage room.



LEVELING FEET
 The 4 adjustable feet are +/- 15 mm in height adjustable.



1

An individual or already existing workbench top can be added.



2

Lifting and lowering by foot-operated Hydraulic lifting unit.



3

Quiet running despite high payload – the future-oriented workbench.



4

The height of the feet can be adjusted to compensate for uneven surfaces.

ERGOPLAN EP SERVICE

REVISION OF AN EXISTING PLANING BENCH PANEL

SAVES VALUABLE WOOD AND MONEY

Thanks to our decades of experience in the field of ergonomic lifting and work tables, we know that new products are not necessarily the better ones. This is also the case with the workbenches, for example. The high-quality material wood – especially from previous processing processes – does not lose its value. Worktops made of solid wood are particularly valuable. Scratches and wear and tear do not lead to a necessary new investment, but you can take advantage:

” We renovate your aged workbenches and prepare them professionally and carefully so that they shine like new again. In addition, we also noticeably relieve your budget.



DISMANTLING

After collection by our forwarding company, your old planer bench top will be disassembled.



RENOVATION

The surfaces of your old planing bench top is sanded waxed and polished.



FUNCTIONAL PARTS

Components, such as front and rear calipers, are checked, reconditioned and readjusted or replaced with new high-quality materials.

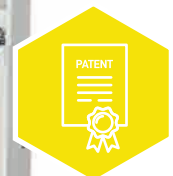


REVISION OF AN EXISTING PLANE PLATE

1. Dismantling your old workbench top.
2. The bench top is picked up, the surfaces sanded, waxed and polished.
3. Defective wooden parts are replaced with new, high-quality materials.
4. Functional parts, such as the pliers, are checked and usually replaced or re-set.
5. The finished workbench plate is delivered back to the place of use.

ART.: 211.130.00

Minimum quantity per order: 5 pieces



The revised workbench top can now be built onto the ErgoPlan EP3 subconstruction. The new workplace is therefore optimally equipped and ergonomically correct for the years to come.

ERGOPLAN EP3 // S.106

ERGOPLAN EP OPTIONS

EQUIPMENT SELECTABLE

The ErgoPlan can be customized with additional equipment options such as a fold-out drive unit, tool base cabinet or accessories with locking bolts, precisely and individually. Work area can be adapted and also expanded. Even outdated workbenches experience completely new possibilities.

OPTIC



FOLDABLE UNDERCARRIAGE

Suitable for ErgoPlan EP3, attached to the base frame. The chassis with the 4 swivel castors can be folded out using a hand lever. The undercarriage lifts the ErgoPlan by approx. 15 mm and thus makes it mobile. When the travel device is folded in, the ErgoPlan is in the static working position.

Weight	approx. 35 kg
--------	---------------

ART.: 211.140.00

Not for retrofitting. Must be ordered with the basic configuration.



ROUND BENCH HOOKS 120 MM

Suitable for ErgoPlan EP1 + EP2, for insertion on the front as a workpiece support, set of 2.

Diameter	ø 30 mm
Weight	approx. 1 kg
Length	120 mm

ART.: 211.201.30 (set of 2)

ROUND BENCH HOOKS 200 MM

Length	200 mm
--------	--------

ART.: 211.205.30 (set of 2)



VERTICAL CLAMP WITH BOLT

Suitable for ErgoPlan EP1 + EP2, with locking bolts for plugging into the grid holes.

Diameter of the bolt	ø 30 mm
Profile	30 x 8.5 mm
Projection	120 mm
Vertical clamping height	200 mm
Weight	approx. 1 kg

ART.: 211.203.30



METAL DRAWER BASE CABINET

Suitable for ErgoPlan EP1 – EP3, with 1 drawer block, drawers with perforated bottom and slotted walls (for individual drawer subdivision), central lock with 2 keys, with label strip and transparent cover.

External dimensions of the body	1,060 x 330 x 675 mm
1x drawer	1,058 x 328 x 675 mm
Usable drawer dimensions	900 x 255 x 600 mm

Drawer load capacity	max. 100 kg
100 % full extension and single extension lock colour	

Color powder coated	Light gray RAL 7035 or blue 5023
Weight	approx. 40 kg

ART.: 210.645.00



MULTIPLEX TOOL CABINET

Suitable for ErgoPlan EP1 – EP3, with 6 drawers.

External dimensions of the body	1,100 x 370 x 500 mm
2x drawers	620 x 40 x 420 mm
2x drawers	360 x 40 x 420 mm
1x drawer	620 x 120 x 420 mm
1x drawer	360 x 120 x 420 mm
Weight	approx. 40 kg

ART.: 210.620.00



ANTI-SLIP SUPPORT, 1,200 MM

Suitable for ErgoPlan EP1 + EP2, with 2 locking bolts for plugging into the grid holes.

Length	1,200 mm
Weight	approx. 3 kg

ART.: 210.610.30

ANTI-SLIP SUPPORT, 600 MM

Length	600 mm
Weight	approx. 2 kg

ART.: 210.612.30



WOODEN BASE CABINET M182

Suitable for ErgoPlan EP1 – EP3, with 2 lockable drawers.

Ball bearing roller guide with 100 % extraction of the drawers	
External dimensions of the body	860 x 400 x 455 mm
Drawer division above	750 x 80 x 380 mm
below	750 x 140 x 380 mm
Weight	approx. 30 kg

ART.: 210.630.00