

BOERE

Quality in Sanding Solutions

X-LINE

BRUSH TEXTURING MACHINE



The development in texturing continues at every moment. This has led to a brush texturing machine which not only structures solid woods, but also brushes veneered panels in a 'rural rustic' way. The unique oscillating movement of the brushes give a stripeless and soft satin feeling surface.

Having a cross grain sanding unit in front of the texturing brushes a 'scarved' structure can be applied to the wood after which the texturing brushes will provide for the unique soft structure.

The SELECT X-Line brush texturing machine is in standard equipment a very complete machine for the texturing of floor parts or furniture panels, both of solid wood or veneered materials. Depending on the application, the machine will be equipped with different numbers and combinations of texturing brushes.

Result: A unique surface!

Besides the operator-friendly aspect of the machine, a lot of attention has been paid to maintenance: easy access to the different machine parts and clear construction makes maintenance quickly and accurately.



Cross grain sanding unit

Applies a unique structure to the surface

Can also be used in combination with a wide belt sanding machine

Non-contact oscillation with minimal compressed air consumption

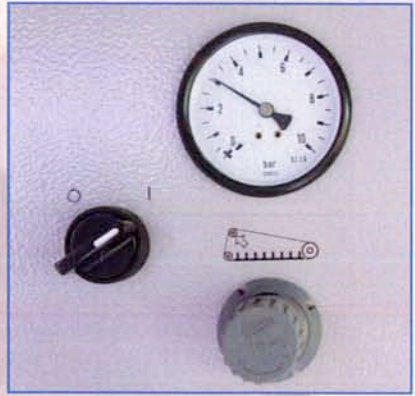
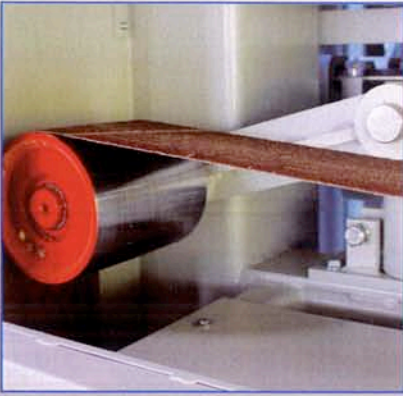
Electronic sanding belt run-off and rupture protection

Start blocking when sanding belt is untensioned

Pneumatic sanding belt tension

Automatic sanding belt length correction for the sanding belt tension

Frequency controlled sanding belt speed



Texturing brushes

Brushes with oscillation system

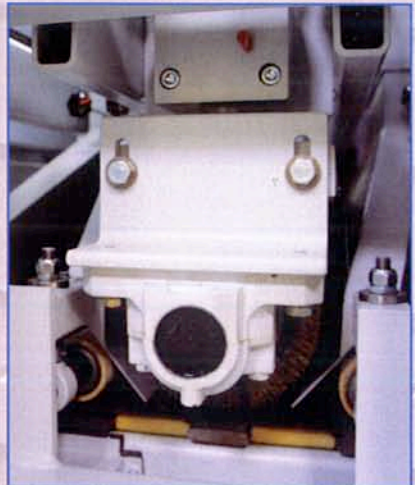
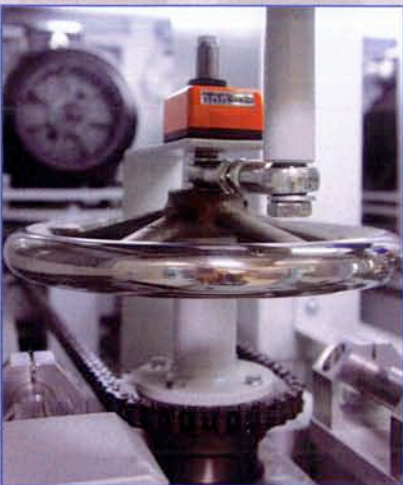
Oscillation system to be switched on/off according to the needs

Reversing system to change over the direction of rotation

Adjustable in depth by means of a hand wheel

Mechanic digital read-out of the depth adjustment of the brushes

Equipped with Michelin (steel) wire and/or Nylon Abrasive in several grain sizes



Brush sanding heads

*Deliverable in many types and grain sizes
Both the brushes and sanding strips are quickly exchangeable*

Operating panel

*Clear and convenient
Separate ammeters for the motor charge*

Feed system

*Equipped with heavy multi-layer conveyor belt
Electronic pneumatic centring
Electronic run-off protection
Electromotive height adjustment of the feed table
Electronic digital read-out of the table position
Frequency controlled infinitely variable feed speed*

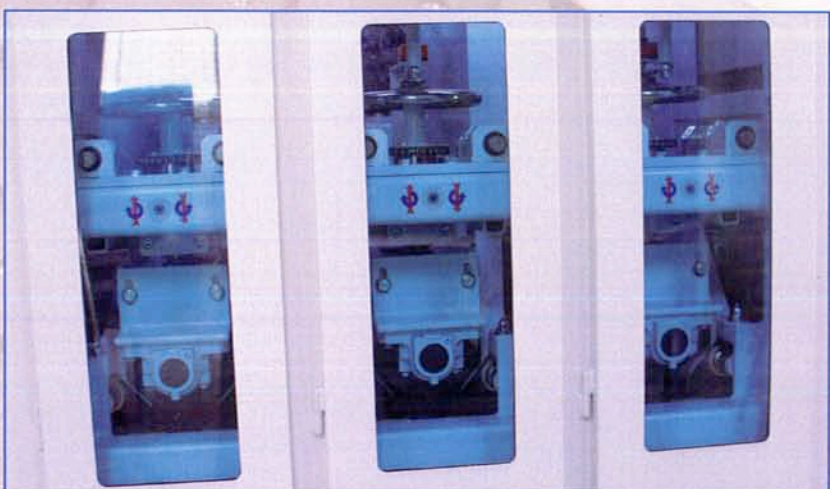


Safety devices

*Protective finger guard
Thickness protection
Emergency stops in- and outfeed side
Doors provided with switching-off release
Lockable main switch*

Exhaustion

*Integrated exhaust hood with central connecting point
Effective dust exhaustion through the unique machine construction*



Most important options:

Touch-Screen operating panel

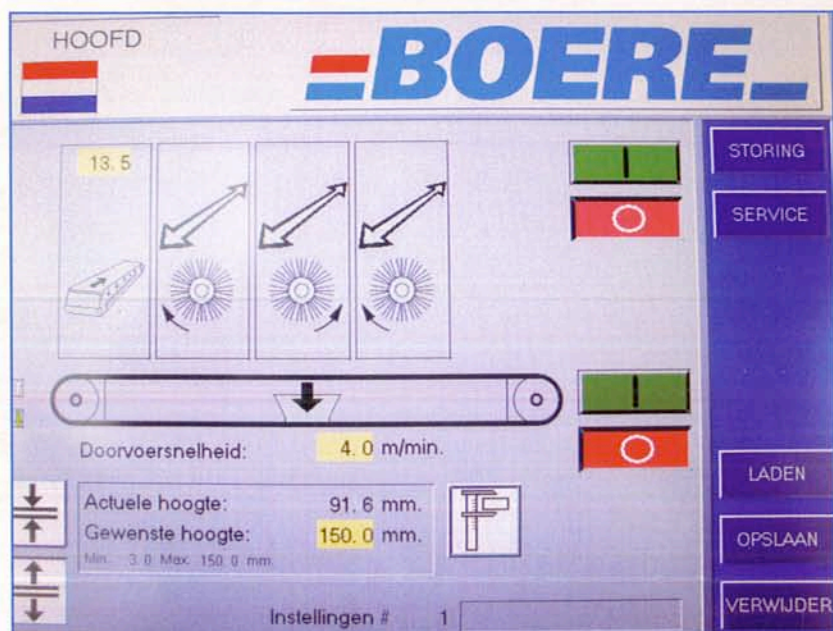
Malfunction mentioning system

50 pre-programmable sanding programs

Deliverable in any desired language

Clear and convenient

Separate ammeters for the motor charge



Pressure plattems

Pressure plattems instead of pressure rollers for small or bent workpieces

Sanding pad

Electronic-pneumatic controlled or segmented sanding pad

Vacuum table

Other options

- In- and outfeed roller tables in several lengths
- Blowing device for cleaning the workpieces
- Heavier drive motors
- Cleaning brush
- In-line system for the conveyor belt for a constant working height

=BOERE=

Dutch quality products

70 year experience combined with modern technology

Your product guides our development

Tailor made solutions for your sanding problems

Reliable products with low maintenance costs

Boere Machinefabriek B.V.

Brugweg 121

PO Box 8

2740 AA Waddinxveen

The Netherlands

tel.: +31(0)182.614400

fax: +31(0)182.618349

e-mail: info@boere.nl

www.boere.nl

*This leaflet is just a short version of the many possibilities.
For almost any use the appropriate type of sander is
deliverable: the reason for a custom made advice!*