



# GIA®

GIA GEMOLOGICAL REPORT

## SAPPHIRE REPORT

GIA REPORT 6234013509

July 26, 2023

### DETAILS

Shape..... **Octagonal**  
 Cutting Style ..... **Step Cut**  
 Transparency ..... **Transparent**  
 Color..... **Blue**

### RESULTS

Species..... **Natural Corundum**  
 Variety..... **Natural Sapphire**  
 Geographic Origin ..... **Not Requested**

### TREATMENT

No Indications of Heating

Item Description: **One loose stone**  
 Weight: **2.01 carats**  
 Measurements: **7.46 x 5.67 x 4.34 mm**  
 Comments: **None**

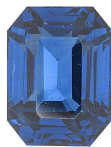


Image is approximate

**FACSIMILE** This is a digital representation of the original GIA Report. This representation might not be accepted in lieu of the original GIA Report in certain circumstances. The original GIA Report includes certain security features which are not reproducible on this facsimile.

[reportcheck.gia.edu](http://reportcheck.gia.edu)

The results documented in this report refer only to the article described, and were obtained using the techniques and equipment used by GIA at the time of examination. This report is not a guarantee or valuation. For additional information and important limitations and disclaimers, please see [www.gia.edu/terms](http://www.gia.edu/terms) or call +1 800 421 7250 or +1 760 603 4500. ©2023 Gemological Institute of America, Inc.



 THE SECURITY FEATURES IN THIS DOCUMENT, INCLUDING THE HOLOGRAM, QR CODE AND MICROPRINT LINES, IN ADDITION TO THOSE NOT LISTED, EXCEED DOCUMENT SECURITY INDUSTRY GUIDELINES.