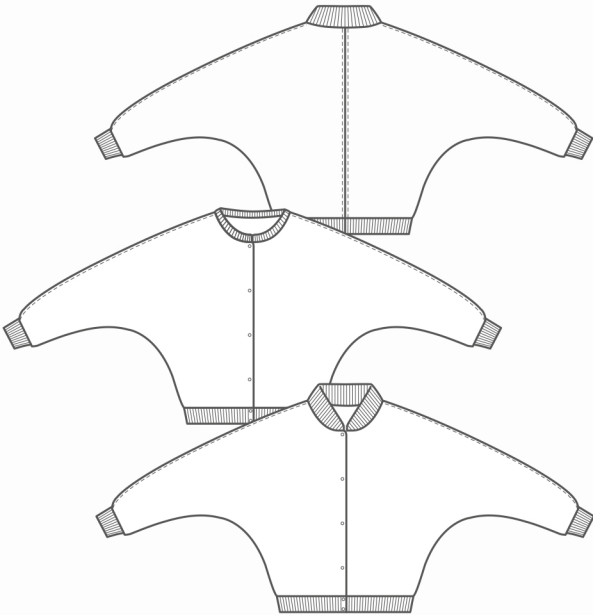


THE MAKER'S ATELIER

The Sport-Luxe Bomber Jacket



themakersatelier.com

| UK size | 8 | 10 | 12 | 14 | 16 | 18 |
|---|------|-------|------|-------|------|-------|
| Inches | | | | | | |
| Bust | 32 | 34 | 36 | 38 | 40 | 42 |
| Waist | 26 | 27 | 29 | 31 | 33 | 35 |
| Hips | 35 | 37 | 39 | 41 | 43 | 45 |
| Centimetres | | | | | | |
| Bust | 81 | 86 | 91 | 96 | 101 | 106 |
| Waist | 64 | 69 | 74 | 79 | 84 | 89 |
| Hips | 89 | 94 | 99 | 104 | 109 | 114 |
| Size conversion | | | | | | |
| US | 4 | 6 | 8 | 10 | 12 | 14 |
| Italy | 40 | 42 | 44 | 46 | 48 | 50 |
| France / Spain | 36 | 38 | 40 | 42 | 44 | 46 |
| Germany | 34 | 36 | 38 | 40 | 42 | 44 |
| Australia | 8 | 10 | 12 | 14 | 16 | 18 |
| Length cm | | | | | | |
| From back neck | 54 | 54.5 | 55 | 55.5 | 56 | 56.5 |
| Waist / hem | 48 | 50.5 | 53 | 55.5 | 58 | 60.5 |
| Sleeve - designed to be intentionally long overarm from side neck | 71 | 71.75 | 72.5 | 73.25 | 74 | 74.75 |
| Main fabrics cm | | | | | | |
| 120 wide | 1.70 | 1.70 | 1.70 | 1.70 | 1.70 | 1.70 |
| 150 wide no nap | 1.30 | 1.30 | 1.30 | 1.30 | 1.30 | 1.30 |
| 150 wide with nap | 1.70 | 1.70 | 1.70 | 1.70 | 1.70 | 1.70 |
| Trim Fabric for collar, cuffs and hem | | | | | | |
| 120 wide | 0.50 | 0.50 | 0.50 | 0.50 | 0.50 | 0.50 |

Also required Either 6 buttons or 6 studs and 1.10m of 2cm cotton tape. You only need the tape if you're using stud fastenings as you need to strengthen the fabric.

Suggested fabrics For the main body medium weight jerseys, light to medium weight woven fabrics, cotton, wool, silks, linen. The trim fabric for collar, cuffs and hem - ribbed fabric with lycra or elastane content.