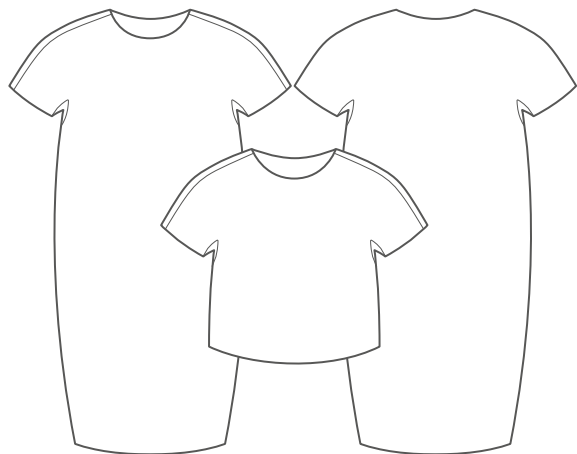


The Shell Dress and Top



UK size	8	10	12	14	16	18
---------	---	----	----	----	----	----

Inches

Bust	32	34	36	38	40	42
Waist	26	27	29	31	33	35
Hips	35	37	39	41	43	45

Centimetres

Bust	81	86	91	96	101	106
Waist	64	69	74	79	84	89
Hips	89	94	99	104	109	114

Size conversion

US	4	6	8	10	12	14
Italy	40	42	44	46	48	50
France / Spain	36	38	40	42	44	46
Germany	34	36	38	40	42	44
Australia	8	10	12	14	16	18

Length cm

Top from back neck	52.5	53	53.5	54	54.5	55
Dress from back neck	100	100.5	101	101.5	102	102.5

Fabrics cm

Top 120/150 wide	1.30	1.30	1.30	1.30	1.30	1.30
Dress 120/150 wide	2.20	2.20	2.20	2.20	2.20	2.20

Also required Matching thread and 2.4m of bias binding, if finished edges required.

Suggested fabrics This structured shape works best in fabrics with some body especially felted and boiled wools, hi-tech fabrics and neoprenes. The fabrics must have some give, not suitable for rigid woven fabrics

Cover image The photograph shows model wearing the top and the dress on the mannequin both in a felted wool with raw edges.

THE MAKER'S ATELIER

themakersatelier.com