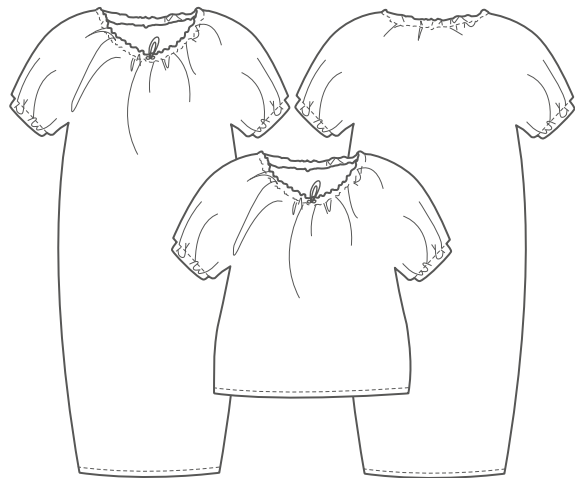


The Drawstring-neck Dress and Top



UK size	8	10	12	14	16	18
---------	---	----	----	----	----	----

Inches

Bust	32	34	36	38	40	42
Waist	26	27	29	31	33	35
Hips	35	37	39	41	43	45

Centimetres

Bust	81	86	91	96	101	106
Waist	64	69	74	79	84	89
Hips	89	94	99	104	109	114

Size conversion

US	4	6	8	10	12	14
Italy	40	42	44	46	48	50
France / Spain	36	38	40	42	44	46
Germany	34	36	38	40	42	44
Australia	8	10	12	14	16	18

Length cm

Top from back neck	55	55.5	56	56.5	57	57.5
Dress from back neck	103.5	104	104.5	105	105.5	106

Fabrics cm

Top 120/150 wide	1.50	1.50	1.50	1.50	1.50	1.50
Dress 120/150 wide	2.50	2.50	2.50	2.50	2.50	2.50

Also required For both Top and Dress matching thread, 1m elasticated cord, 80cm x 1cm wide non-roll elastic and a 4cm square of fusible interlining. For woven fabrics, 80cm of 1cm wide bias binding.

Suggested fabrics Fluid drapery fabrics, woven or jersey, viscose mixes, silks and crepes.

Cover image The photograph shows the dress in a viscose jersey.

THE MAKER'S ATELIER

themakersatelier.com