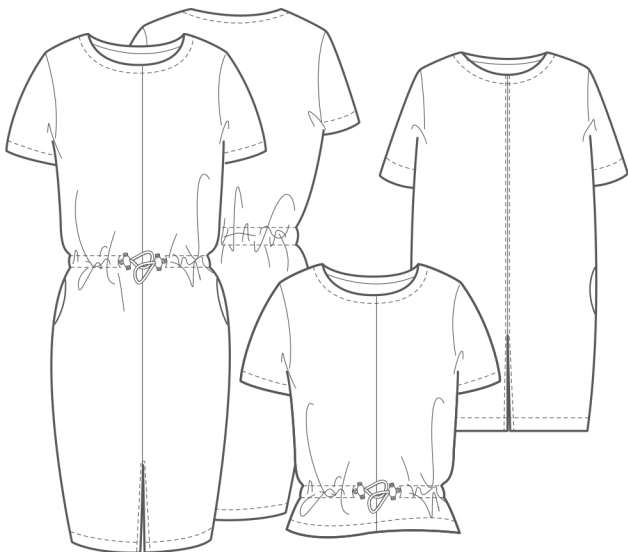


The Utility Dress, Tunic and Top



UK size	8	10	12	14	16	18
---------	---	----	----	----	----	----

Inches

Bust	32	34	36	38	40	42
Waist	25	27	29	31	33	35
Hips	35	37	39	41	43	45

Centimetres

Bust	81	86	91	96	101	106
Waist	64	69	74	79	84	89
Hips	89	94	99	104	109	114

Size conversion

US	4	6	8	10	12	14
Italy	40	42	44	46	48	50
France / Spain	36	38	40	42	44	46
Germany	34	36	38	40	42	44
Australia	8	10	12	14	16	18

Finished garment measurements

Length cm

	8	10	12	14	16	18
From side neck						
Dress	95.5	100	100.5	101	101.5	102
Tunic	74	74.5	75	75.5	76	76.5
Top	53	53.5	54	54.5	55	55.5
To Drawstring	47	47.5	48	48.5	49	49.5

Circumference cm

Bust	124	129	134	139	144	149
Hip	116	121	126	131	136	141
Hem	105	110	115	120	125	130
Sleeve	33.5	34.75	36	37.25	38.5	39.75

Fabrics cm

Dress	115 wide	3.00	3.00	3.00	3.00	3.00	3.00
	150 wide	1.60	1.60	1.60	2.20	2.20	2.20
Tunic	115 wide	2.00	2.00	2.00	2.00	2.00	2.00
	150 wide	1.40	1.40	1.40	1.70	1.70	1.70
Top	115 wide	1.80	1.80	1.80	1.80	1.80	1.80
	150 wide	1.00	1.00	1.00	1.40	1.40	1.40

Also required Drawstring version only 1.6m x 15mm cotton tape, 2m x 3mm corded elastic and 2 pull-cord ends.

Suggested fabrics Light to medium weight woven fabrics including cottons, linens and parachute silks.

themakersatelier.com