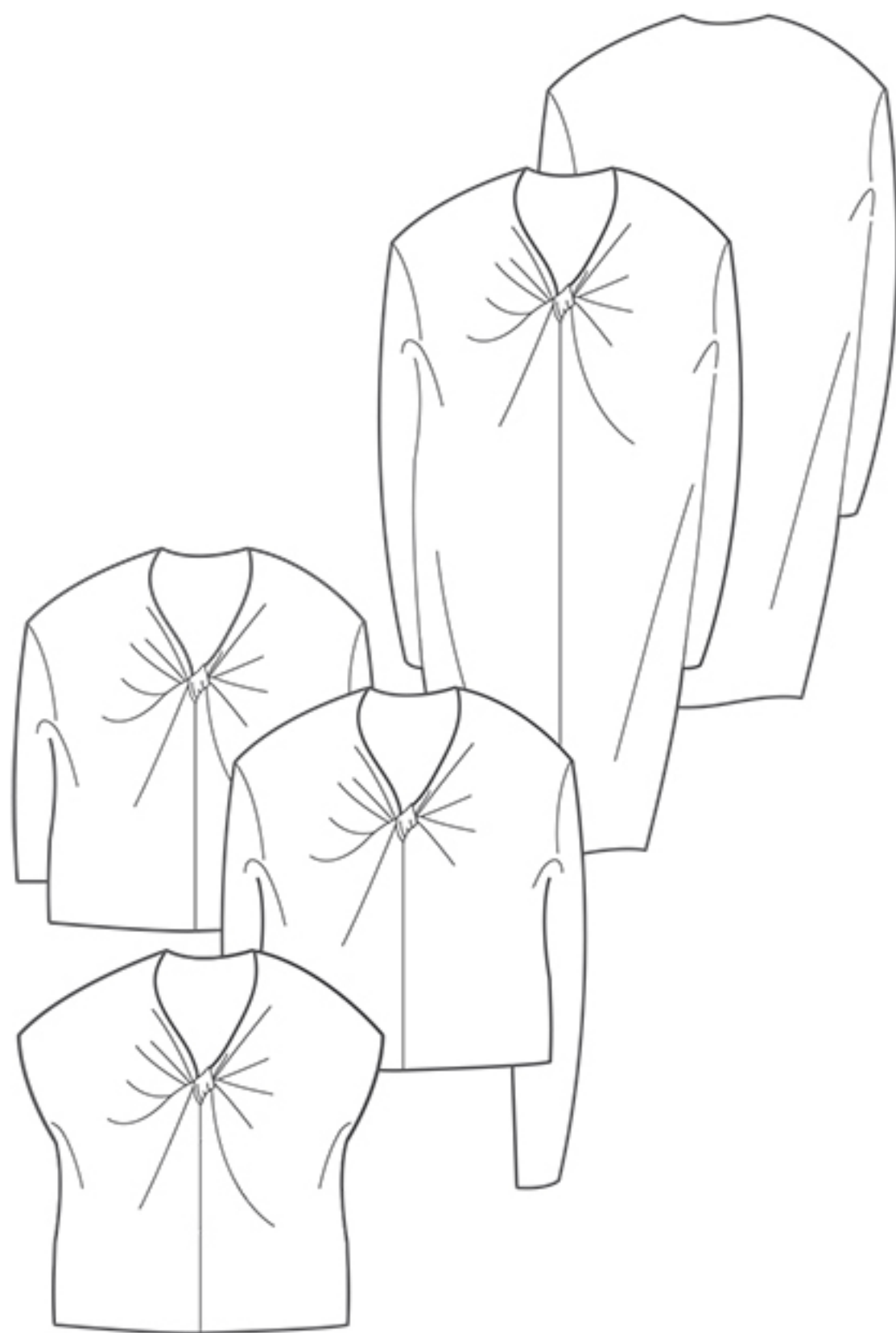


The Origami Dress and Top



themakersatelier.com

UK size	8	10	12	14	16	18
Inches						
Bust	32	34	36	38	40	42
Waist	26	27	29	31	33	35
Hips	35	37	39	41	43	45
Centimetres						
Bust	81	86	91	96	101	106
Waist	64	69	74	79	84	89
Hips	89	94	99	104	109	114
Size conversion						
US	4	6	8	10	12	14
Italy	40	42	44	46	48	50
France / Spain	36	38	40	42	44	46
Germany	34	36	38	40	42	44
Australia	8	10	12	14	16	18
Length cm						
From side neck						
Dress	105	105.5	106	106.5	107	107.5
Top	56	56.5	57	57.5	58	58.5
Sleeve length from side neck to cuff						
Long	75	75.5	76	76.5	77	77.5
Short	49	49.5	50	50.5	51	51.5
Fabrics cm - l/s long sleeve. s/s short sleeve						
Dress l/s	115 wide	2.40	2.40	2.40	2.40	2.40
	150 wide	1.80	1.80	1.80	1.80	1.80
Top l/s	115 wide	1.35	1.35	1.35	1.35	1.35
	150 wide	1.25	1.25	1.25	1.25	1.25
Top s/s	115 wide	1.35	1.35	1.35	1.35	1.35
	150 wide	1.00	1.00	1.00	1.00	1.00

Also required matching thread.

Suggested fabrics Suitable for jersey fabrics only including cotton, viscose or silk jerseys. It is possible to make the sleeveless top in woven crinkle fabrics as shown in the picture, but they need stretch and fluidity.

Cover image Sarah wears a silk chiffon crinkle version with the Ultimate Pencil Skirt. On the mannequin a viscose jersey fabric.