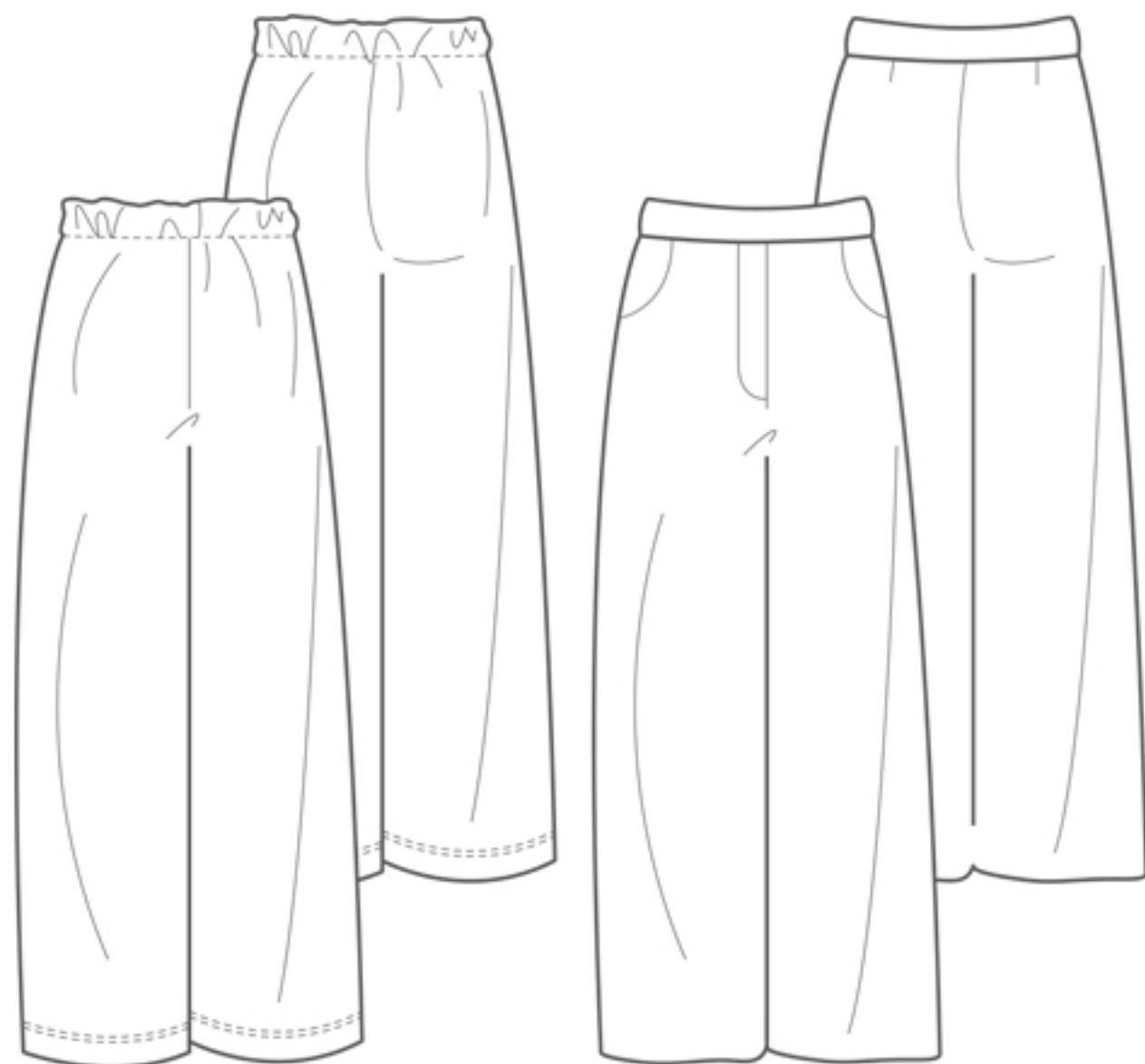


The Wide-Legged Trouser



UK size	8	10	12	14	16	18
Inches						
Bust	32	34	36	38	40	42
Waist	26	27	29	31	33	35
Hips	35	37	39	41	43	45
Centimetres						
Bust	81	86	91	96	101	106
Waist	64	69	74	79	84	89
Hips	89	94	99	104	109	114
Size conversion						
US	4	6	8	10	12	14
Italy	40	42	44	46	48	50
France / Spain	36	38	40	42	44	46
Germany	34	36	38	40	42	44
Australia	8	10	12	14	16	18
Finished measurements						
Waist (woven)	69	74	79	84	89	94
Hips (woven)	95	100	105	110	115	120
Inside leg from crotch to hem						
Woven	76	76.5	77	77.5	78	78.5
Jersey	80	80.5	81	81.5	82	82.5
Fabrics cm						
Woven version						
115 wide	2.50	2.50	2.50	2.50	2.50	2.50
150 wide	2.30	2.30	2.30	2.30	2.30	2.30
Jersey version						
115 wide	2.50	2.50	2.50	2.50	2.50	2.50
150 wide	2.10	2.10	2.10	2.10	2.10	2.10

Also required Woven version - 1 x Hook and bar clasp, 18cm zip
Iron on woven interfacing

- 15cm strip x	.85	.90	.95	1.00	1.05	1.10
Jersey version - Non-roll elastic						
22mm x	.80	.85	.90	.95	1.00	1.05

Suggested fabrics Woven version: fluid crepe and fine drill fabrics, superfine baby cord. Jersey version: cotton, viscose or bamboo knits with lycra or elastane content.

Cover image shows the trouser in a matt crepe fabric.

themakersatelier.com