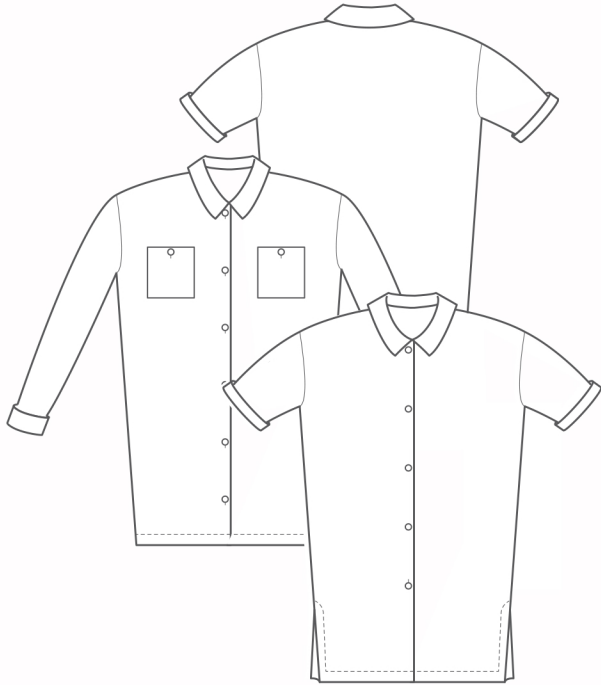


The Oversized Shirt Dress



| | S | M | L | XL |
|--|---------|----------|-----------|-----------|
| UK size | 8 / 10 | 12 / 14 | 16 / 18 | 20 / 22 |
| Inches | | | | |
| Bust | 32 / 34 | 36 / 38 | 40 / 42 | 44 / 46 |
| Waist | 26 / 27 | 29 / 31 | 33 / 35 | 37 / 39 |
| Hips | 35 / 37 | 39 / 41 | 43 / 45 | 47 / 49 |
| Centimetres | | | | |
| Bust | 81 / 86 | 91 / 96 | 101 / 106 | 111 / 116 |
| Waist | 64 / 69 | 74 / 79 | 84 / 89 | 94 / 99 |
| Hips | 89 / 94 | 99 / 104 | 109 / 114 | 119 / 124 |
| Size conversion | | | | |
| US | 4 / 6 | 8 / 10 | 12 / 14 | 16 / 18 |
| Italy | 40 / 42 | 44 / 46 | 48 / 50 | 52 / 54 |
| France / Spain | 36 / 38 | 40 / 42 | 44 / 46 | 48 / 50 |
| Germany | 34 / 36 | 38 / 40 | 42 / 44 | 46 / 48 |
| Australia | 8 / 10 | 12 / 14 | 16 / 18 | 20 / 22 |
| Length cm | | | | |
| Body from side neck to hem | 103 | 104 | 105 | 106 |
| Sleeve from side neck to cuff | | | | |
| Long / short | 73 / 45 | 74 / 46 | 75 / 47 | 76 / 48 |
| Fabric required cm long / short sleeved | | | | |
| 115 wide long | 2.80 | 2.80 | 2.80 | 2.80 |
| 115 wide short | 2.50 | 2.50 | 2.50 | 2.50 |
| 150 wide long | 2.20 | 2.20 | 2.20 | 2.20 |
| 150 wide short | 1.50 | 1.50 | 2.20 | 2.20 |

Also required 1.10 metres of interfacing, 5/7 buttons and matching sewing thread.

Suggested fabrics most shirting fabrics from cool cottons and linens, through to warmer baby-cord and other brushed fabrics.

Cover image shows medium weight cotton shirting fabric.