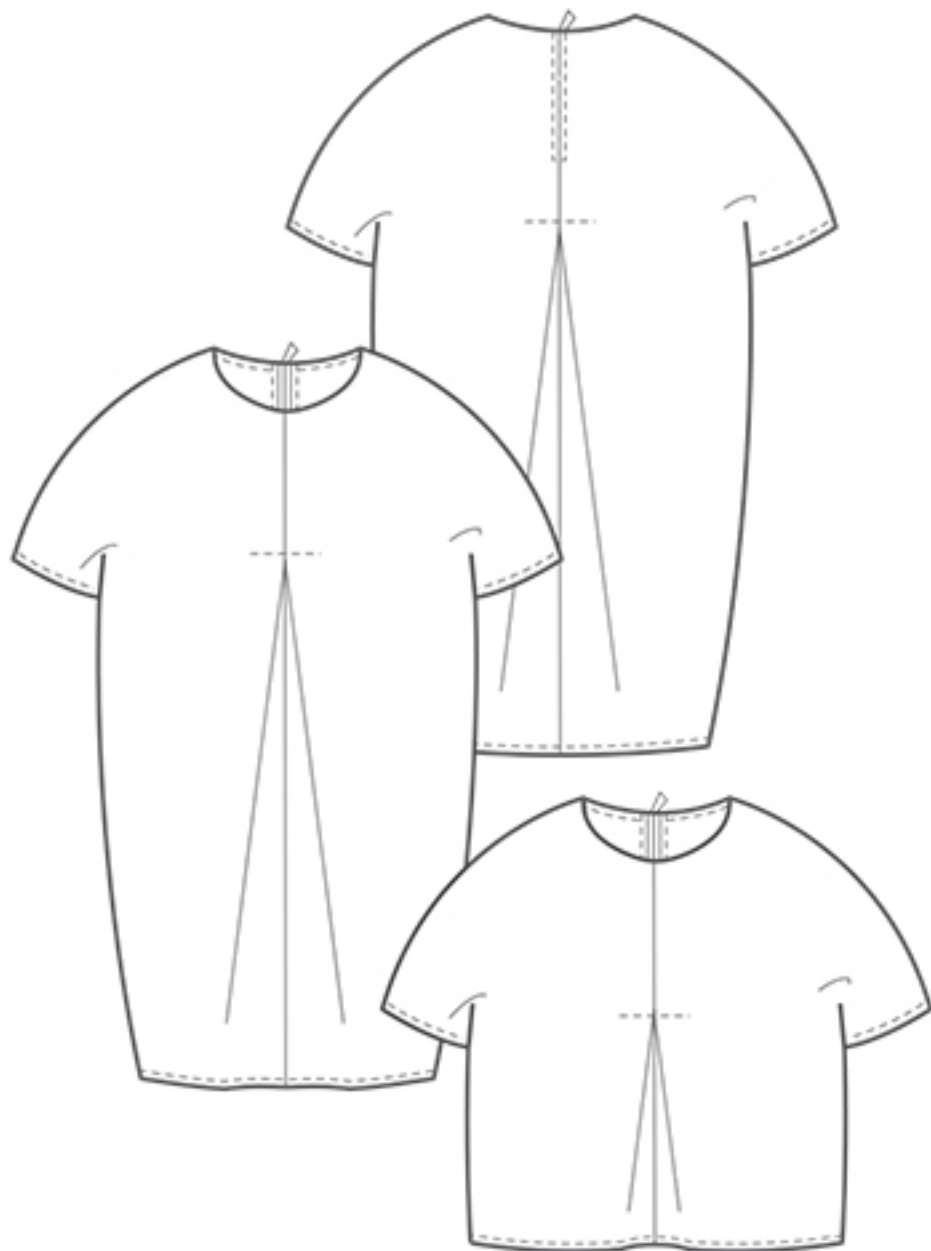


# The Pleat Detail Dress and Top



	S	M	L	XL
<b>UK size</b>	8 / 10	12 / 14	16 / 18	20 / 22
<b>Inches</b>				
Bust	32 / 34	36 / 38	40 / 42	44 / 46
Waist	25 / 27	29 / 31	33 / 35	37 / 39
Hips	35 / 37	39 / 41	43 / 45	47 / 49
<b>Centimetres</b>				
Bust	81 / 86	91 / 96	101 / 106	111 / 116
Waist	64 / 69	74 / 79	84 / 89	94 / 99
Hips	89 / 94	99 / 104	109 / 114	119 / 124
<b>Size conversion</b>				
US	4 / 6	8 / 10	12 / 14	16 / 18
Italy	40 / 42	44 / 46	48 / 50	52 / 54
France / Spain	36 / 38	40 / 42	44 / 46	48 / 50
Germany	34 / 36	38 / 40	42 / 44	46 / 48
Australia	8 / 10	12 / 14	16 / 18	20 / 22
<b>Length cm (SN = side neck)</b>				
Top SN to hem	55	56	57	58
SN to sleeve cuff	35	37	39	41
Dress SN to hem	102	103	104	105
SN to sleeve cuff	35	37	39	41
<b>Fabric required cm</b>				
Top 115 wide	1.50	1.50	1.80	1.80
Top 150 wide	1.30	1.30	1.30	1.30
Dress 115 wide	2.50	2.50	2.80	2.80
Dress 150 wide	2.20	2.20	2.20	2.20

Also required 20cm/8" light weight zip and matching sewing thread. Optional 40cm of fusible interfacing for neck facings. Suggested fabrics light to medium weight woven fabrics; cotton shirtings, chambrays, linens, Broderie Anglaise.

Cover image shown in light weight denim chambray fabric.