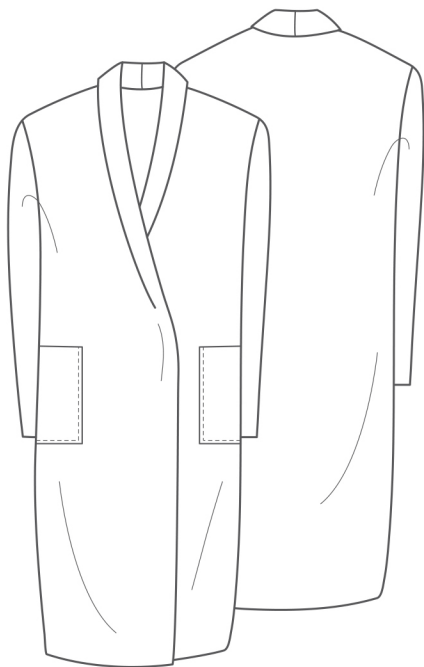


# The Shawl Collar Coat



UK size	8	10	12	14	16	18	20	22
---------	---	----	----	----	----	----	----	----

## Inches

Bust	32	34	36	38	40	42	44	46
Waist	25	27	29	31	33	35	37	39
Hips	35	37	39	41	43	45	47	49

## Centimetres

Bust	81	86	91	96	101	106	111	116
Waist	64	69	74	79	84	89	94	99
Hips	89	94	99	104	109	114	119	124

## Size conversion

US	4	6	8	10	12	14	16	18
Italy	40	42	44	46	48	50	52	54
France / Spain	36	38	40	42	44	46	48	50
Germany	34	36	38	40	42	44	46	48
Australia	8	10	12	14	16	18	20	22

## Finished lengths

### Side neck to hem

Inches	41½	42	42½	43	43¼	43¾	44	44½
Centimetres	106	107	108	109	110	111	112	113

### Side neck to cuff

Inches	29¾	30¼	30¾	31¼	31¾	32¼	32¾	33¼
Centimetres	76	77	78	79.5	80.5	82	83	84.5

### Bust on fixed crossover

Inches	45	47	49	51	53	55	57	59
Centimetres	115	120	125	130	135	140	145	150

## Fabric required cm for raw edged hems (add 30cm to all quantities for finished hems)

120 wide	2.50	2.50	3.00	3.00	3.10	3.10	3.20	3.20
150 wide	2.40	2.40	2.40	2.40	2.50	2.50	2.50	2.50

**Also required** matching sewing thread. 1 x large magnetic or popper/snap fastener. Optional seam binding for frayable fabrics.

**Suggested fabrics** light to medium coat fabrics especially Melton or felted finishes to allow for the raw edges as shown in the photograph.

**Cover image** Maria wears the Shawl Collar Coat in a wool Melton. On the mannequin a non-frayable synthetic mix woven fabric.