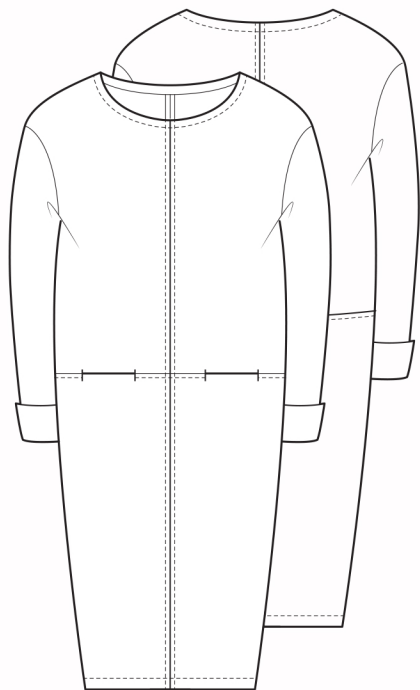


The Seam Detail Dress



UK size	8	10	12	14	16	18	20	22
---------	---	----	----	----	----	----	----	----

Inches

Bust	32	34	36	38	40	42	44	46
Waist	25	27	29	31	33	35	37	39
Hips	35	37	39	41	43	45	47	49

Centimetres

Bust	81	86	91	96	101	106	111	116
Waist	64	69	74	79	84	89	94	99
Hips	89	94	99	104	109	114	119	124

Size conversion

US	4	6	8	10	12	14	16	18
Italy	40	42	44	46	48	50	52	54
France / Spain	36	38	40	42	44	46	48	50
Germany	34	36	38	40	42	44	46	48
Australia	8	10	12	14	16	18	20	22

Finished lengths

Side neck to hem

Inches	40½	41	41¼	41¾	42	42½	43	43¼
--------	-----	----	-----	-----	----	-----	----	-----

Side neck to turned cuff

Inches	28	28¼	28½	28¾	29	29¼	29½	29¾
--------	----	-----	-----	-----	----	-----	-----	-----

Bust at underarm

Inches	45	47	49	51	53	55	57	59
--------	----	----	----	----	----	----	----	----

Hip 21/53 from side neck

Inches	44¾	46¾	48¾	50¾	52¾	54¾	56¾	58¾
--------	-----	-----	-----	-----	-----	-----	-----	-----

Fabric required cm

120 wide	2.50	2.50	2.50	2.70	2.70	2.70	3.30	3.30
150 wide	2.00	2.00	2.00	2.40	2.40	2.40	2.40	2.40

Also required matching sewing thread and optional contrast top-stitching thread to highlight seams. Optional 50cm of fusible light weight interfacing for the neck facings. If not using facings 1m bias binding to finish neck.

Suggested fabrics light to medium woven fabrics from chambrays and linens to light weight wools.

Cover image Tandeeka wears The Seam Detail Dress in light weight wool.