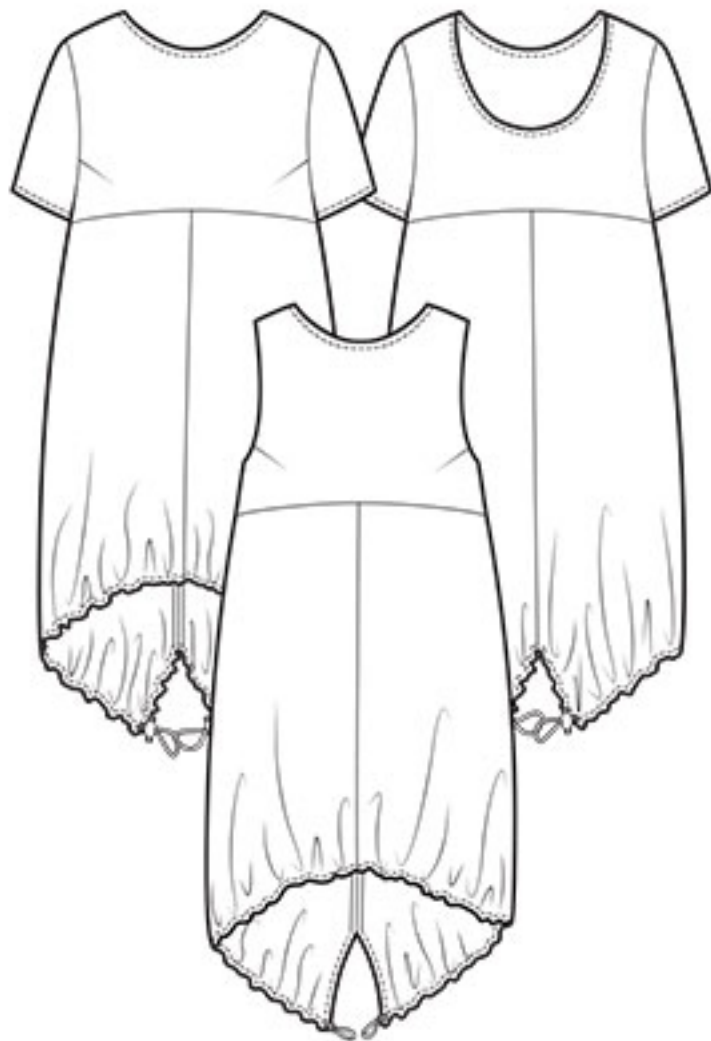


# The Sun Dress



UK size	4	6	8	10	12	14	16	18	20	22
---------	---	---	---	----	----	----	----	----	----	----

## Inches

Bust	28	30	32	34	36	38	40	42	44	46
Waist	21	23	25	27	29	31	33	35	37	39
Hips	31	33	35	37	39	41	43	45	47	49

## Centimetres

Bust	71	76	81	86	91	96	101	106	111	116
Waist	54	59	64	69	74	79	84	89	94	99
Hips	79	84	89	94	99	104	109	114	119	124

## Size conversion

US	0	2	4	6	8	10	12	14	16	18
Italy	36	38	40	42	44	46	48	50	52	54
France/Spain	32	34	36	38	40	42	44	46	48	50
Germany	30	32	34	36	38	40	42	44	46	48
Australia	4	6	8	10	12	14	16	18	20	22

## Finished lengths – Inches (SN = side neck, UA = underarm)

Front from SN	40	40½	40½	40¾	41	41¼	41½	41¾	42	42¼
Back from SN	50	50½	50½	50¾	50½	50¾	51	51¼	51½	51¾
SN to waist	14	14¼	14½	14½	14½	14¾	15	15¼	15½	15¾
Bust at UA	33	35	37	39	41	43	45	47	49	51
Bicep	12	12½	13	13½	14	14½	15	15½	16	16½

## Fabric required – Sleeveless

48" wide	2¾yd	2¾yd	2¾yd	2¾yd	2¾yd	2¾yd	3½yd	3½yd	3½yd	3½yd
60" wide	2¾yd	2¾yd	2¾yd	2¾yd	2¾yd	2¾yd	3yd	3yd	3yd	3yd
120cm wide	2.50	2.50	2.50	2.50	2.50	2.50	3.00	3.00	3.00	3.00
150cm wide	2.50	2.50	2.50	2.50	2.50	2.50	2.70	2.70	2.70	2.70

## Fabric required – With sleeves

48" wide	2¾yd	2¾yd	2¾yd	2¾yd	2¾yd	2¾yd	3½yd	3½yd	3½yd	3½yd
60" wide	2½yd	2½yd	2½yd	2½yd	2½yd	2½yd	2¾yd	2¾yd	2¾yd	2¾yd
120cm wide	2.50	2.50	2.50	2.50	2.50	2.50	3.00	3.00	3.00	3.00
150cm wide	2.00	2.00	2.00	2.00	2.00	2.00	2.30	2.30	2.30	2.30

Also required 3m x 10/15mm or 3½yd x ½" seam binding, 2m or 2½yds of 2mm or 3mm corded elastic, 2 x sprung toggles and matching sewing thread. Suggested fabrics Light to medium weight woven linens, cottons, silks and viscose mixes. Cover image Isabel wears The Sun Dress in linen.