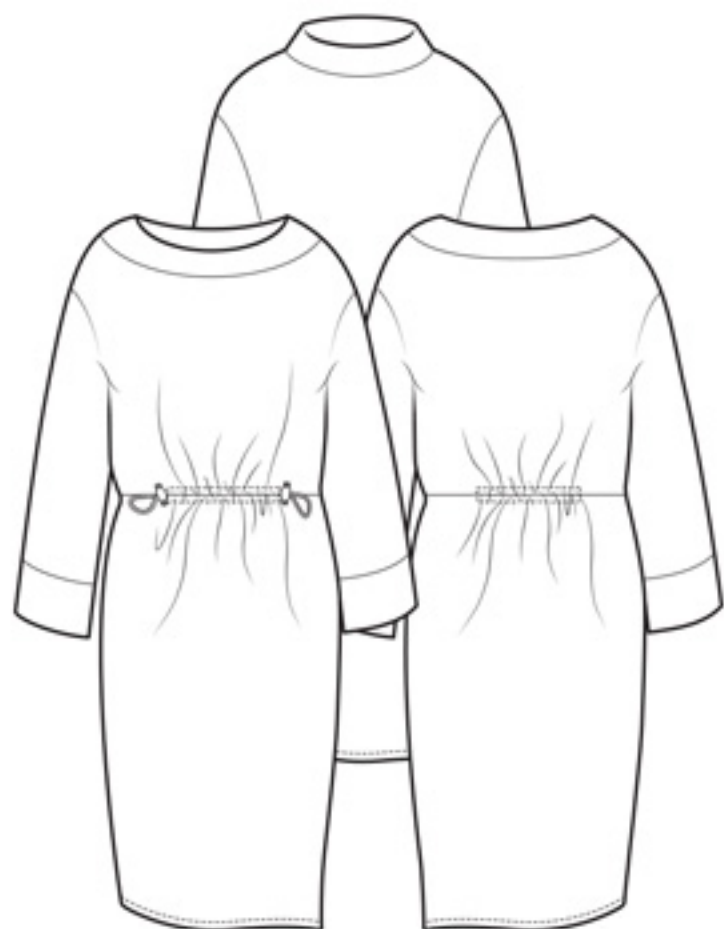


# The Relaxed Drawstring Dress



UK size	4	6	8	10	12	14	16	18	20	22
<b>Inches</b>										
Bust	28	30	32	34	36	38	40	42	44	46
Waist	21	23	25	27	29	31	33	35	37	39
Hips	31	33	35	37	39	41	43	45	47	49

<b>Centimetres</b>										
Bust	71	76	81	86	91	96	101	106	111	116
Waist	54	59	64	69	74	79	84	89	94	99
Hips	79	84	89	94	99	104	109	114	119	124

<b>Size conversion</b>										
US	0	2	4	6	8	10	12	14	16	18
Italy	36	38	40	42	44	46	48	50	52	54
France/Spain	32	34	36	38	40	42	44	46	48	50
Germany	30	32	34	36	38	40	42	44	46	48
Australia	4	6	8	10	12	14	16	18	20	22

<b>Finished lengths</b>										
<b>Side neck to hem</b>										
Inches	42	42¼	42½	42¾	43	43¼	43½	43¾	44	44¼
<b>Side neck to waist seam</b>										
Inches	14¾	15	15	15¼	15½	15¾	16	16¼	16½	16¾
<b>Bust at underarm</b>										
Inches	41	43	45	47	49	51	53	55	57	59
<b>Arm circumference at cuff</b>										
Inches	13½	14	14½	15	15½	16	16	16½	17	17½
<b>Hem circumference</b>										
Inches	37	38	39	41	43	45	47	49	51	53

<b>Fabric required</b>										
48" wide	3½yd	3½yd	3½yd	3½yd	3½yd	3½yd	3¾yd	3¾yd	3¾yd	3¾yd
60" wide	2½yd	2½yd	2½yd	2½yd	2½yd	2½yd	2¾yd	2¾yd	2¾yd	2¾yd
120cm wide	3.00	3.00	3.00	3.00	3.00	3.00	3.30	3.30	3.30	3.30
150cm wide	2.10	2.10	2.10	2.10	2.10	2.10	2.50	2.50	2.50	2.50

**Also required** 2m x 25mm / 2½ x 1" seam binding, 1m / 1¼yds of 2mm or 3mm corded elastic, 50cm x 18mm / ½yd x ¾" flat elastic, 2 x sprung toggles and matching sewing thread. **Suggested fabrics** Light to medium fluid woven fabrics especially crepe constructions in wool, silk and viscose mixes. **Cover image** Isabel wears The Relaxed Drawstring Dress in a poly/viscose crepe.