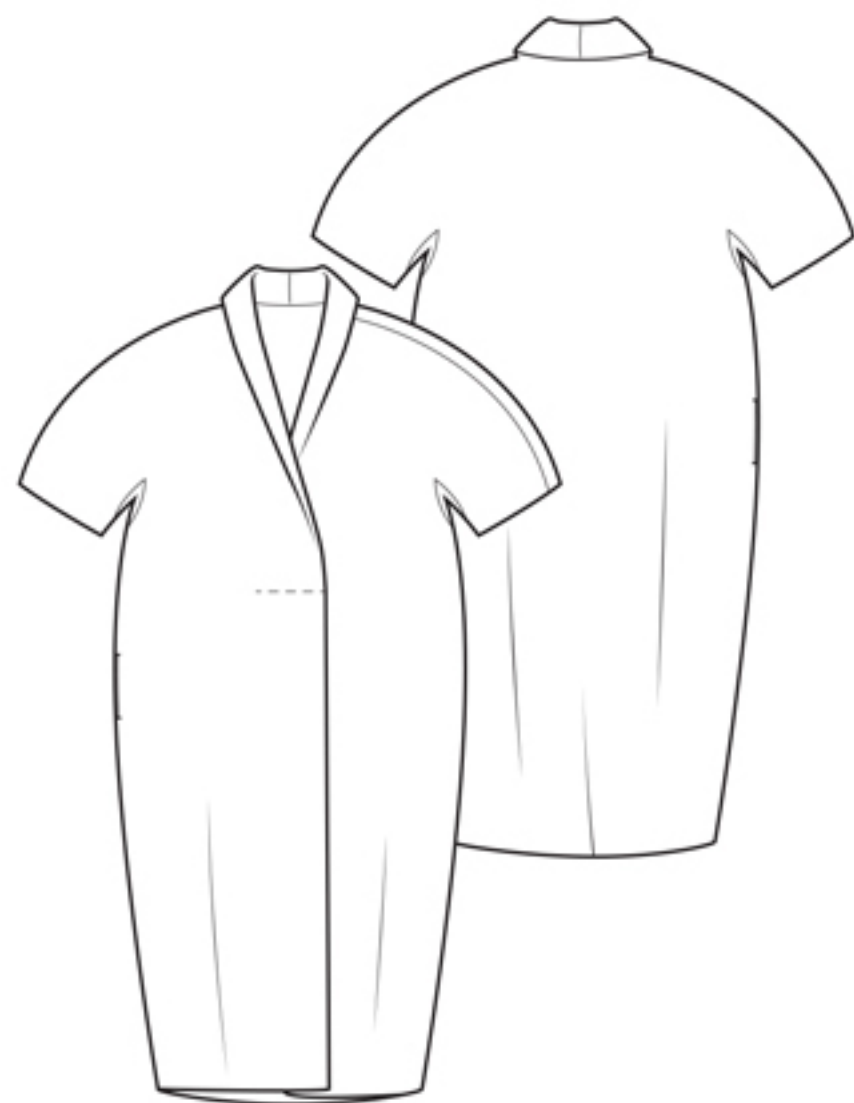


The Shawl Collar Dress



Due to the minimal seam allowance at the underarm, this style requires the fabric edges to be overlocked.

UK size	4	6	8	10	12	14	16	18	20	22
Inches										
Bust	28	30	32	34	36	38	40	42	44	46
Waist	21	23	25	27	29	31	33	35	37	39
Hips	31	33	35	37	39	41	43	45	47	49
Centimetres										
Bust	71	76	81	86	91	96	101	106	111	116
Waist	54	59	64	69	74	79	84	89	94	99
Hips	79	84	89	94	99	104	109	114	119	124
Size conversion										
US	0	2	4	6	8	10	12	14	16	18
Italy	36	38	40	42	44	46	48	50	52	54
France/Spain	32	34	36	38	40	42	44	46	48	50
Germany	30	32	34	36	38	40	42	44	46	48
Australia	4	6	8	10	12	14	16	18	20	22
Finished lengths – SN = side neck (cm/inches)										
Length	93	94	95	96	97	98	99	100	101	102
SN to hem	36 ³ / ₄	37	37 ¹ / ₂	37 ³ / ₄	38 ¹ / ₄	38 ¹ / ₂	39	39 ¹ / ₄	39 ³ / ₄	40
Sleeve overarm	35	36	36.5	37	38	39	39.5	40	41	42
SN to cuff	13 ³ / ₄	14	14 ¹ / ₄	14 ¹ / ₂	15	15 ¹ / ₄	15 ¹ / ₂	15 ³ / ₄	16	16 ¹ / ₄
Bicep at cuff	26	27	28	29	30	31	32	33	34	35
	10 ¹ / ₄	10 ¹ / ₂	11	11 ¹ / ₄	11 ¹ / ₂	12	12 ¹ / ₂	13	13 ¹ / ₄	13 ¹ / ₂
Bust at fold	87	92	97	102	107	112	117	122	127	132
	34	36	38	40	42	44	46	48	50	52
Hem	105	110	115	120	125	130	135	140	145	150
	41	43	45	47	49	51	53	55	57	59

Fabric required

120cm wide	3.00	3.00	3.00	3.00	3.00	3.00	3.00	3.00	3.00	3.00
150cm wide	2.50	2.50	2.50	2.50	2.50	2.50	2.50	2.50	2.50	2.50
48" wide	3 ¹ / ₂ yd	3 ¹ / ₂ yd	3 ¹ / ₂ yd	3 ¹ / ₂ yd	3 ¹ / ₂ yd	3 ¹ / ₂ yd	3 ¹ / ₂ yd	3 ¹ / ₂ yd	3 ¹ / ₂ yd	3 ¹ / ₂ yd
60" wide	3 ¹ / ₄ yd	3 ¹ / ₄ yd	3 ¹ / ₄ yd	3 ¹ / ₄ yd	3 ¹ / ₄ yd	3 ¹ / ₄ yd	3 ¹ / ₄ yd	3 ¹ / ₄ yd	3 ¹ / ₄ yd	3 ¹ / ₄ yd

Also required – 3m / 3yd 12mm bias binding for hem and cuff and matching sewing thread.

Fabric Suggestions

Suitable for most dress-weight fabrics. Select viscose blends for drape or pure wool, cotton or linen for a more structured look. On the cover Amelia wears the dress in poly/viscose crepe and on the mannequin, a version in viscose/linen.