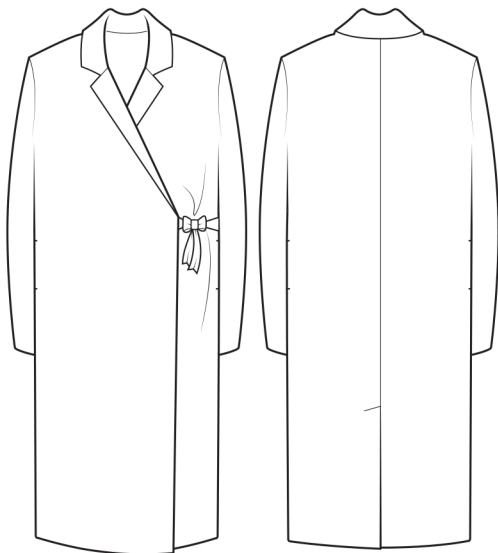


The Woven Wrap Dress



UK size	4	6	8	10	12	14	16	18	20	22
Inches										
Bust	28	30	32	34	36	38	40	42	44	46
Waist	21	23	25	27	29	31	33	35	37	39
Hips	31	33	35	37	39	41	43	45	47	49
Centimetres										
Bust	71	76	81	86	91	96	101	106	111	116
Waist	54	59	64	69	74	79	84	89	94	99
Hips	79	84	89	94	99	104	109	114	119	124
Size conversion										
US	0	2	4	6	8	10	12	14	16	18
Italy	36	38	40	42	44	46	48	50	52	54
France/Spain	32	34	36	38	40	42	44	46	48	50
Germany	30	32	34	36	38	40	42	44	46	48
Australia	4	6	8	10	12	14	16	18	20	22
Finished lengths – SN = side neck (cm/inches)										
Length	102	103	104	105	106	107	108	109	110	111
SN to hem	40	40½	41	41½	41¾	42	42½	43	43¼	43½
Shoulder	12.75	13	13.25	13.5	13.75	14	14.25	14.5	14.75	15
from SN	5	5½	5¼	5¾	5½	5¾	5¾	5¾	6	6½
Bicep at UA	38	39.5	41	42.5	44	45.5	47	48.5	50	51.5
	15	15½	16	16½	17	17½	18	18½	19	19½
Bust	92	97	102	107	112	117	122	127	132	137
	36	38	40	42	44	46	48	50	52	54
Hem	92	97	102	107	112	117	122	127	132	137
	36	38	40	42	44	46	48	50	52	54

Fabric required

120cm wide	3.50	3.50	3.50	3.50	3.50	3.50	3.50	3.50	3.50	3.50
150cm wide	2.75	2.75	2.75	2.75	2.75	2.75	2.75	2.75	2.75	2.75
Interfacing	1.10	1.10	1.10	1.10	1.10	1.10	1.10	1.10	1.10	1.10
48" wide	4yd	4yd	4yd	4yd	4yd	4yd	4yd	4yd	4yd	4yd
60" wide	3¼yd	3¼yd	3¼yd	3¼yd	3¼yd	3¼yd	3¼yd	3¼yd	3¼yd	3¼yd
Interfacing	1¼yd	1¼yd	1¼yd	1¼yd	1¼yd	1¼yd	1¼yd	1¼yd	1¼yd	1¼yd

Also required – Optional 18m / 20yd seam binding to fully bind seams, slide buckle or 1m / 1yd ribbon and matching sewing thread.

Fabric Suggestions – Most dress and lightweight coat fabrics: wool, denim, silk, linen or constructions with viscose for fluidity and drape. Cover image – Amelia wears The Wrap Coat Dress in lightweight wool and on the mannequin, a version in poly/viscose crepe.