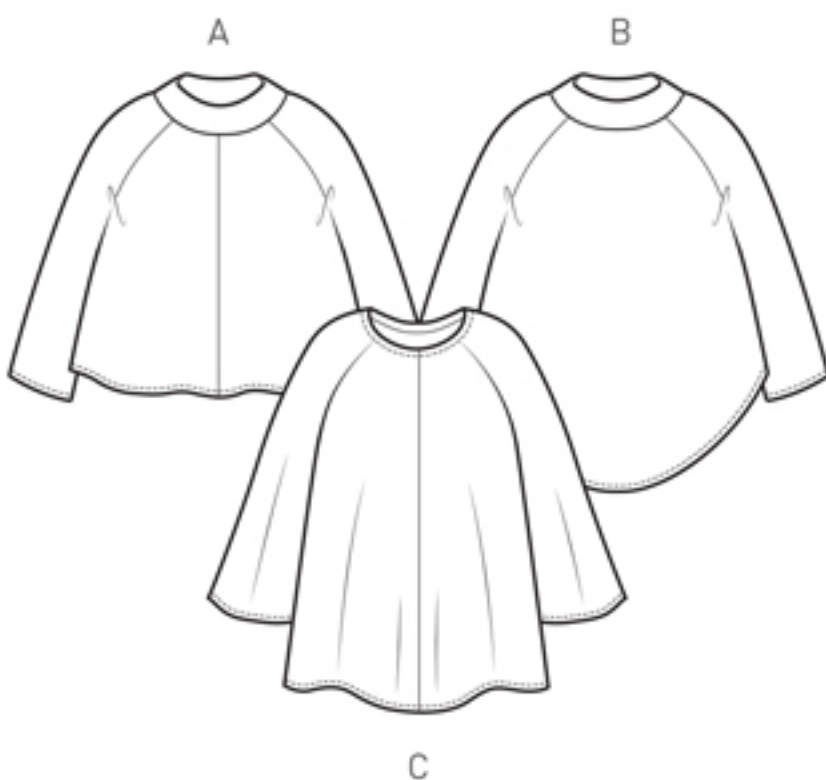


The Flared Tunic and Top



UK size	4	6	8	10	12	14	16	18	20	22
Inches										
Bust	28	30	32	34	36	38	40	42	44	46
Waist	21	23	25	27	29	31	33	35	37	39
Hips	31	33	35	37	39	41	43	45	47	49
Centimetres										
Bust	71	76	81	86	91	96	101	106	111	116
Waist	54	59	64	69	74	79	84	89	94	99
Hips	79	84	89	94	99	104	109	114	119	124
Size conversion										
US	0	2	4	6	8	10	12	14	16	18
Italy	36	38	40	42	44	46	48	50	52	54
France/Spain	32	34	36	38	40	42	44	46	48	50
Germany	30	32	34	36	38	40	42	44	46	48
Australia	4	6	8	10	12	14	16	18	20	22
Finished lengths (cm/inches) – SN = side neck, UA = underarm										
Length – Shorter	56	57	58	59	60	61	62	63	64	65
Top: SN to hem	22	22½	22¾	23	23½	24	24¼	24¾	25	25½
Length – Longer	76	77	78	79	80	81	82	83	84	85
Tunic: SN to hem	30	30¼	30½	31	31½	32	32¼	32½	33	33½
Bicep at UA	33.5	35	36.5	38	39.5	41	42.5	44	45.5	47
	13¼	13¾	14¼	14¾	15½	16	16¾	17¼	17¾	18½
Bust	90	95	100	105	110	115	120	125	130	135
	35	37	39	41	43	45	47	49	51	53

Fabric required

All Sizes	Option A	Option B	Option C
120cm wide	2.10	2.50	2.60
150cm wide	1.50	1.80	2.40
48" wide	2½yd	2¾yd	3yd
60" wide	1¾yd	2yd	2¾yd

Also required – Matching sewing thread. 1m / 1yd 12mm bias binding for the round neck version, option C.

Fabric Suggestions

Most jersey constructions: boiled wool, cotton terry and loopback, micro-fleece, viscose jersey.

Cover image – Amelia wears The Flared Top, option B in micro-fleece and on the mannequin, option C in viscose crepe jersey.