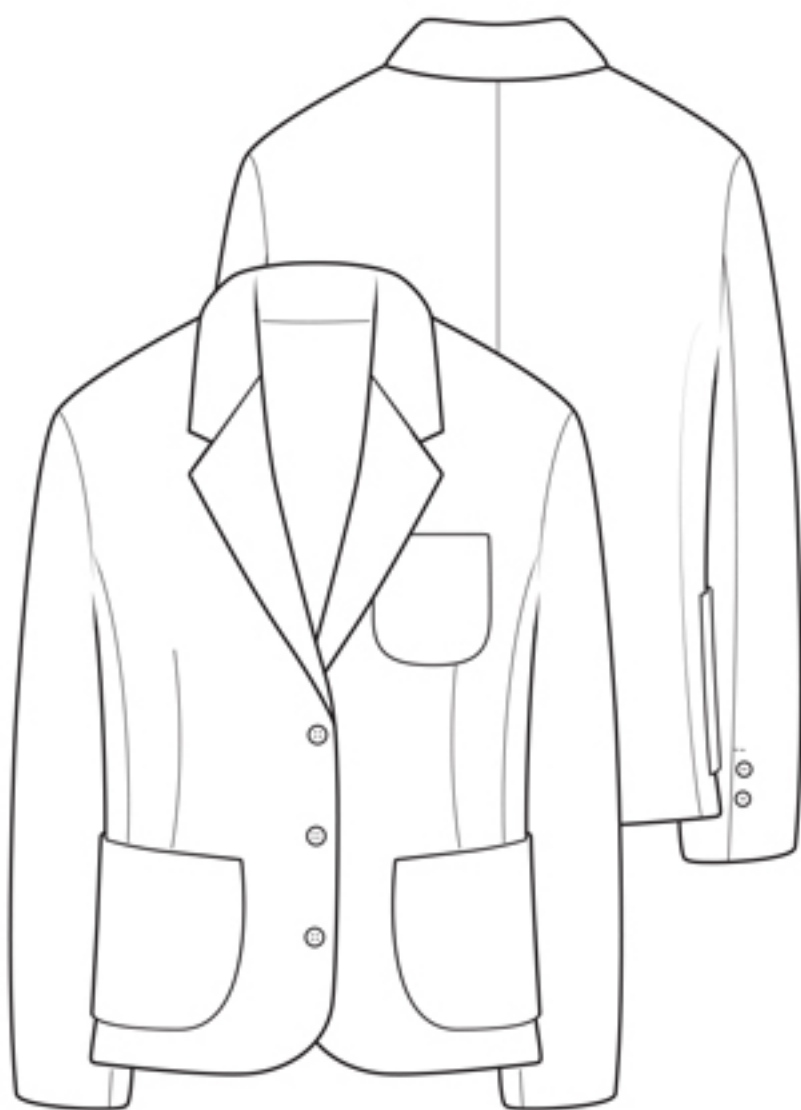


The Blazer



UK size	4	6	8	10	12	14	16	18	20	22
Inches										
Bust	28	30	32	34	36	38	40	42	44	46
Waist	21	23	25	27	29	31	33	35	37	39
Hips	31	33	35	37	39	41	43	45	47	49

Centimetres										
Bust	71	76	81	86	91	96	101	106	111	116
Waist	54	59	64	69	74	79	84	89	94	99
Hips	79	84	89	94	99	104	109	114	119	124

Finished measurements (cm/inches) – SN = side neck, OA = overarm

Length (cm)	72	72.5	73	73.5	74	74.5	75	75.5	76	76.5
SN to hem (inch)	28	28¼	28½	28¾	29	29¼	29½	29¾	30	30¼
Sleeve OA (cm)	75	75.5	76	76.5	77	77.5	78	78.5	79	79.5
SN to cuff (inch)	29½	29¾	30	30¼	30½	30¾	31	31¼	31½	31¾
Bicep/sleeve (cm)	28	29	30	31	32	33	34	35	36	37
(inch)	11	11½	11¾	12	12½	13	13¼	13½	14	14½
Bust (cm)	81	86	91	96	101	106	111	116	121	126
(inch)	32	34	36	38	40	42	44	46	48	50
Waist (cm)	76	81	86	91	96	101	106	111	116	121
(inch)	30	32	34	36	38	40	42	44	46	48
Hip (cm)	86	91	96	101	106	111	116	121	126	131
(inch)	34	36	38	40	42	44	46	48	50	52

Fabric required

120cm wide	2.20	2.20	2.20	2.20	2.20	2.50	2.50	2.50	2.50	2.50
150cm wide	1.80	1.80	1.80	1.80	1.80	2.20	2.20	2.20	2.20	2.20
48" wide	2½yd	2½yd	2½yd	2½yd	2½yd	2¾yd	2¾yd	2¾yd	2¾yd	2¾yd
60" wide	2yd	2yd	2yd	2yd	2yd	2½yd	2½yd	2½yd	2½yd	2½yd

Optional lining

120" wide	1.70	1.70	1.70	1.70	1.70	2.20	2.20	2.20	2.20	2.20
48" wide	2yd	2yd	2yd	2yd	2yd	2½yd	2½yd	2½yd	2½yd	2½yd

Interfacing

120" wide	0.90	0.90	0.90	0.90	0.90	0.90	0.90	0.90	0.90	0.90
48" wide	1yd	1yd	1yd	1yd	1yd	1yd	1yd	1yd	1yd	1yd

Also required 3 buttons for front fastening and 4 or 6 buttons for cuffs and matching sewing thread. Optional 18m seam binding to bind fabric edges on unlined version.

Fabric Suggestions Linen, denim, medium weight cottons, lightweight wools.

Cover image – Wendy wears The Blazer in linen with The Wide-legged Trouser.

On the mannequin, a version in wool suiting.