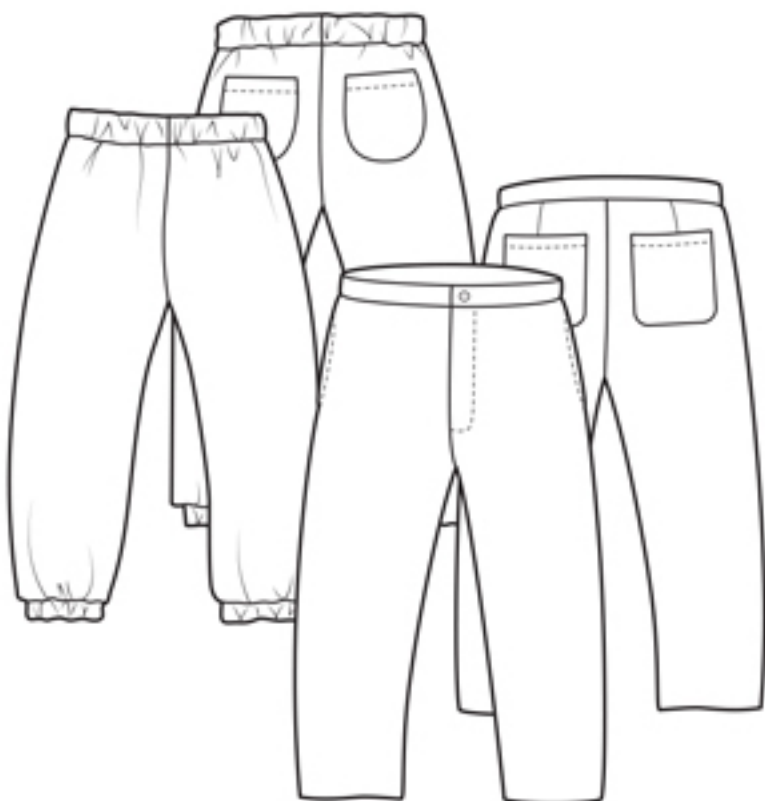


The Lounge Pant



UK size	4	6	8	10	12	14	16	18	20	22
Inches										
Waist	21	23	25	27	29	31	33	35	37	39
Hips	31	33	35	37	39	41	43	45	47	49
Centimetres										
Waist	54	59	64	69	74	79	84	89	94	99
Hips	79	84	89	94	99	104	109	114	119	124
Finished garment measurements – Woven and Jersey										
Waist (cm)	60	65	70	75	80	85	90	95	100	105
(inch)	23	25	27	29	31	33	35	37	39	41
Hip (cm)	92	97	102	107	112	117	122	127	132	137
(inch)	36	38	40	42	44	46	48	50	52	54
Hem (cm)	33	35	37	39	41	43	45	47	49	51
(inch)	13	13½	14½	15½	16	16¾	17½	18¼	19	19¾
Inside Leg (cm)	60	60	60	60	60	60	60	60	60	60
(inch)	23½	23½	23½	23½	23½	23½	23½	23½	23½	23½
Fabric required – Woven										
120cm wide	1.90	1.90	1.90	1.90	1.90	2.00	2.00	2.00	2.00	2.00
150cm wide	1.25	1.25	1.25	1.25	1.25	1.70	1.70	1.70	1.70	1.70
48" wide	2¼yd	2¼yd	2¼yd	2¼yd	2¼yd	2½yd	2½yd	2½yd	2½yd	2½yd
60" wide	1¼yd	1¼yd	1¼yd	1¼yd	1¼yd	2yd	2yd	2yd	2yd	2yd
Interfacing										
120cm wide	0.80	0.80	0.80	1.00	1.00	1.00	1.20	1.20	1.20	1.20
48" wide	1yd	1yd	1yd	1¼yd	1¼yd	1¼yd	1½yd	1½yd	1½yd	1½yd
Fabric required – Jersey										
120 wide	1.70	1.70	1.70	1.70	1.70	2.00	2.00	2.00	2.00	2.00
150 wide	1.00	1.00	1.00	1.00	1.00	1.50	1.50	1.50	1.50	1.50
48" wide	2yd	2yd	2yd	2yd	2yd	2½yd	2½yd	2½yd	2½yd	2½yd
60" wide	1¼yd	1¼yd	1¼yd	1¼yd	1¼yd	1¾yd	1¾yd	1¾yd	1¾yd	1¾yd

Also required Woven: 18cm/7in zipper, 1 x button for front fastening.

Jersey: 2m or 2¼ yd 25mm/1in elastic and matching sewing thread.

Fabric Suggestions Woven: cotton drill, linen, denim and other mid-weight woven fabrics, Jersey: - Medium weight jersey fabrics, single or double knit, loop back and brushed constructions in cotton or cotton / viscose blends

Cover image – Rae wears the woven Lounge Pant in linen and Flora wears the jersey Lounge Pant in cotton jersey.