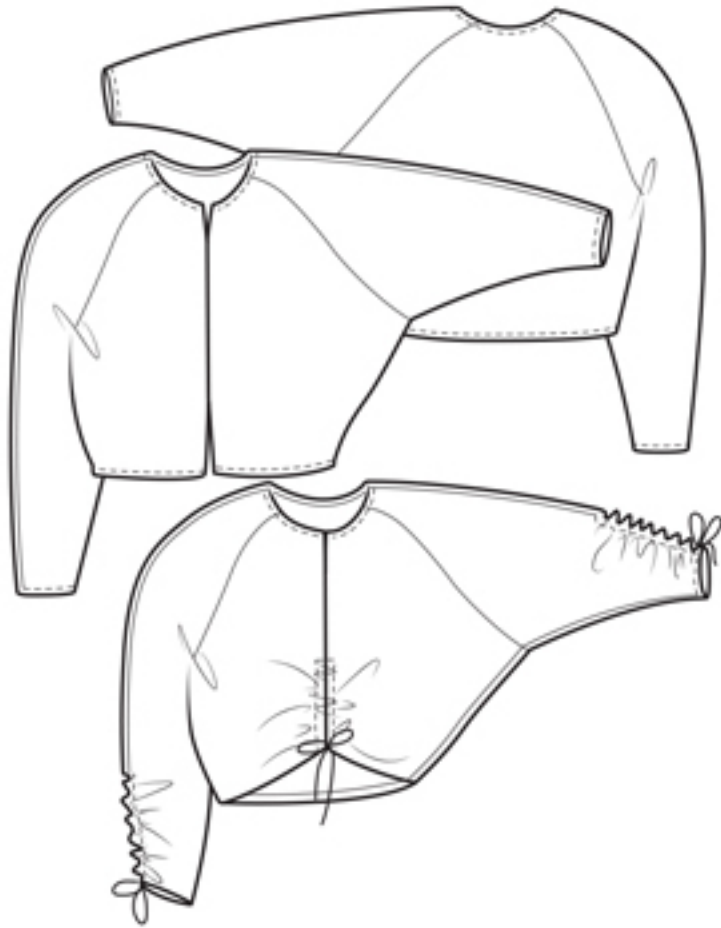


The Tie Detail Top



UK size	4	6	8	10	12	14	16	18	20	22
Inches										
Bust	28	30	32	34	36	38	40	42	44	46
Waist	21	23	25	27	29	31	33	35	37	39
Hips	31	33	35	37	39	41	43	45	47	49
Centimetres										
Bust	71	76	81	86	91	96	101	106	111	116
Waist	54	59	64	69	74	79	84	89	94	99
Hips	79	84	89	94	99	104	109	114	119	124
Finished measurements (cm/inches) – SN = side neck, OA = overarm										
Length (cm)	52	52.5	53	53.5	54	54.5	55	55.5	56	56.5
SN to hem (inch)	20¼	20½	20¾	21	21¼	21½	21¾	22	22¼	22½
Sleeve OA (cm)	66	66.5	67	67.5	68	68.5	69	69.5	70	70.5
SN to cuff (inch)	26	26¼	26⅜	26½	26¾	26⅞	27	27¼	27½	27¾
Bicep/sleeve (cm)	42	43.5	45	46.5	48	49.5	51	53.5	55	56.5
(inch)	16½	17	17¾	18¼	19	19½	20	21	21¾	22¼
Bust (cm)	132	136	140	144	148	152	156	160	164	168
(inch)	52	53½	55	56½	58	59½	61	63½	65	67
Hem (cm)	96	101	106	111	116	121	126	131	136	141
(inch)	37½	39½	41½	43½	45½	47½	49½	51½	53½	55½
Fabric required										
120cm wide	1.80	1.80	1.80	1.80	1.80	2.00	2.00	2.00	2.00	2.20
150cm wide	1.50	1.50	1.50	1.50	1.50	1.80	1.80	1.80	1.80	1.80
48" wide	2yd	2yd	2yd	2yd	2yd	2¼yd	2¼yd	2¼yd	2¼yd	2¼yd
60" wide	1¾yd	1¾yd	1¾yd	1¾yd	1¾yd	2yd	2yd	2yd	2yd	2yd

Also required 1m / 1yd x 12mm / ¼in narrow bias binding and matching sewing thread. For the ruffled detail version: 3m / 3¼yd narrow ribbon, cord or self-fabric rouleau. For the tie neck version: 70cm / ¾yd narrow ribbon, cord or tape.

Fabric Suggestions All light to medium weight fluid shirting fabrics: Tencel, viscose, silk, soft cottons.

Cover image – Flora wears The Tie Detail Top in Silk with The Wide-legged Trouser. On the mannequin, a version in viscose.