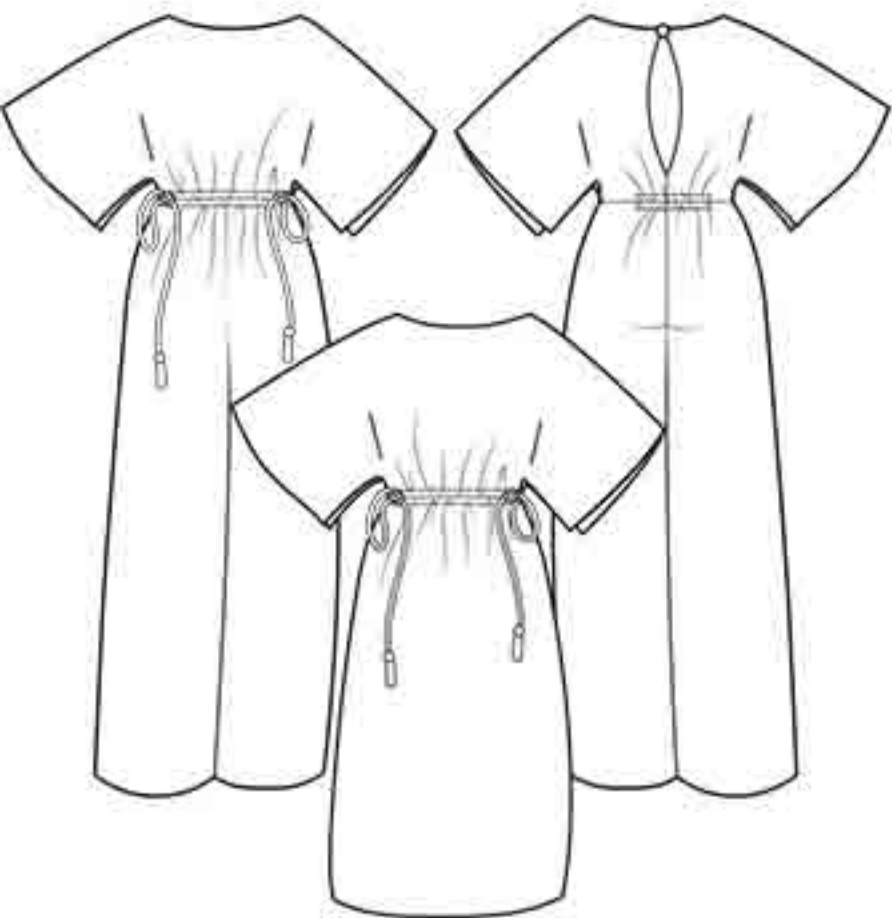


The Madeline Robertson Jumpsuit and Dress



| UK size | 4 | 6 | 8 | 10 | 12 | 14 | 16 | 18 | 20 | 22 |
|---------------|----|----|----|----|----|----|----|----|----|----|
| Inches | | | | | | | | | | |
| Bust | 28 | 30 | 32 | 34 | 36 | 38 | 40 | 42 | 44 | 46 |
| Waist | 21 | 23 | 25 | 27 | 29 | 31 | 33 | 35 | 37 | 39 |
| Hips | 31 | 33 | 35 | 37 | 39 | 41 | 43 | 45 | 47 | 49 |

| Centimetres | | | | | | | | | | |
|-------------|----|----|----|----|----|-----|-----|-----|-----|-----|
| Bust | 71 | 76 | 81 | 86 | 91 | 96 | 101 | 106 | 111 | 116 |
| Waist | 54 | 59 | 64 | 69 | 74 | 79 | 84 | 89 | 94 | 99 |
| Hips | 79 | 84 | 89 | 94 | 99 | 104 | 109 | 114 | 119 | 124 |

| Size conversion | | | | | | | | | | |
|-----------------|----|----|----|----|----|----|----|----|----|----|
| US | 0 | 2 | 4 | 6 | 8 | 10 | 12 | 14 | 16 | 18 |
| Italy | 36 | 38 | 40 | 42 | 44 | 46 | 48 | 50 | 52 | 54 |
| France/Spain | 32 | 34 | 36 | 38 | 40 | 42 | 44 | 46 | 48 | 50 |
| Germany | 30 | 32 | 34 | 36 | 38 | 40 | 42 | 44 | 46 | 48 |
| Australia | 4 | 6 | 8 | 10 | 12 | 14 | 16 | 18 | 20 | 22 |

| Finished lengths | | | | | | | | | | |
|----------------------------------|-----|-----|-----|-----|-----|-----|-----|-----|-----|-----|
| Jumpsuit side neck to hem | | | | | | | | | | |
| Inches | 57½ | 58 | 58½ | 59 | 59½ | 60 | 60½ | 61 | 61½ | 62 |
| Dress side neck to hem | | | | | | | | | | |
| Inches | 41 | 43 | 45 | 47 | 49 | 51 | 53 | 55 | 57 | 59 |
| Side neck to waist seam | | | | | | | | | | |
| Inches | 16 | 16¼ | 16½ | 16¾ | 17 | 17¼ | 17½ | 17¾ | 18 | 18¼ |
| Inside leg | | | | | | | | | | |
| Inches | 29 | 29 | 29 | 29 | 29 | 29 | 29 | 29 | 29 | 29 |
| Leg circumference at hem | | | | | | | | | | |
| Inches | 22 | 22 | 22 | 22 | 22 | 22 | 22 | 22 | 22 | 22 |

Fabric required - Jumpsuit

| | | | | | | | | | | |
|------------|------|------|------|------|------|------|------|------|------|------|
| 60" wide | 3½yd | 3½yd | 3½yd | 3½yd | 3½yd | 3½yd | 3¾yd | 3¾yd | 3¾yd | 3¾yd |
| 150cm wide | 3.00 | 3.00 | 3.00 | 3.00 | 3.00 | 3.00 | 3.30 | 3.30 | 3.30 | 3.30 |

Dress

| | | | | | | | | | | |
|------------|------|------|------|------|------|------|------|------|------|------|
| 60" wide | 2½yd | 2½yd | 2½yd | 2½yd | 2½yd | 2½yd | 2½yd | 2½yd | 2½yd | 2½yd |
| 150cm wide | 2.00 | 2.00 | 2.00 | 2.00 | 2.00 | 2.00 | 2.80 | 2.80 | 2.80 | 2.80 |

Also required 2m x 25mm / 2½ x 1" seam binding. 50cm x 18mm / ½yd x ¾" flat elastic, 1x dressing gown cord or similar and matching sewing thread.
Suggested fabrics Light to medium fluid woven fabrics especially crepe constructions in wool, silk and viscose mixes. **Cover image** Madeline wears the jumpsuit and on the mannequin, the dress, both in poly/viscose crepe.