

PEARL

COLOR TECHNIQUE



8.12/8AV



9.12/9AV



10.12/10AV

Who is the ideal client for this look?

This look brings blonde bombshell to life in all the right ways. This technique delivers the perfect harmony of violet and ash tones to enhance and soften blonde hues. It's simply pearl perfection!

How long does this look take and how is it priced?

The total appointment time, including styling, takes about 2 hours and cost upwards of \$250.

What is the maintenance schedule of this look?

The look delivers a show-stopping blonde finish. Depending on the natural level of the client, we recommend 4-6 weeks between appointments for darker based clients or 6-8 weeks for a highlight retouch on lighter based clients. Toning between to maintain pearl tone is recommended and can help longevity of the color.

About the look

Combine highs and lows for pure blonde perfection. Our Pearl hues deliver an iridescent shimmer for any blonde. From soft sand Pearl to fierce cool Pearl, ColorDesign's Pearl collection delivers it all!

Color Formulas

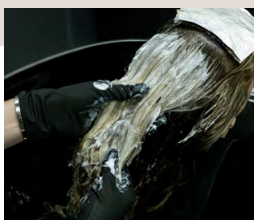
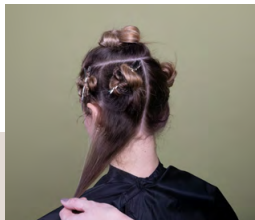
Formula A (Apply to back sections)	Ammonia Free violet powder lightener + 20 volume ColorDesign developer.
Formula B (Apply to front sections)	Shiny Blond clay-based lightener + 30 volume ColorDesign developer.
Formula C (Lowlights)	ColorDesign 8.12 + 10 volume ColorDesign developer.
Formula D (Back Toner)	ColorDesign Ammonia free 9.12 + 5 volume ColorDesign developer.
Formula E (Front Toner)	ColorDesign Ammonia free 10.12 + 5 volume ColorDesign developer.

#Simply *Luxurious* Color



PEARL

COLOR TECHNIQUE



Formula steps

- 1** To begin, section the hair by creating a horseshoe section at the top of the head, from top of eyebrow and back to the crown.
- 2** Section each side below the top section and behind the ear. Beginning in the back, take a subsection from the back of the ear to the nape using diagonal back slices, gently backcomb and apply formula A. Alternate slices and weaves for a more natural effect.
PRO TIP: Incorporate your low light formula C at a 3:1 ratio. 3 highlights to 1 lowlights.
- 3** At the top of the side section, take a slice from the top of the remaining hair and gently backcomb and apply Formula A with the balayage technique.
- 4** Next, move on to the side sections. Take a diagonal section along the hairline, weave babylights, applying Formula B from scalp to ends. Alternate lowlight at 3:1 ratio depending on density of the hair.
- 5** On top section, working in the back towards the front, take a horizontal, 1/4-inch weaved section and apply Formula B. Make sure to fully saturate the hair from mid-section to ends and feather the formula up toward the scalp for natural blend. Alternate with lowlights formula C at a 3:1 ratio. Continue forward until you reach the center of the top section.
- 6** Now move to the front, apply a micro weave at the hairline. Continue with back-to-back foils for a total of 3. Then apply a teasing light feathering at the root, followed by a lowlight using Formula C.
- 7** Continue foiling with Formulas B and C at a 3:1 ratio throughout the rest of the front top section.
- 8** After processing, rinse, then tone from crown down to the nape with Formula D, then continue to front section with Formula E.
- 9** Process 5-20 minutes, rinse, and shampoo with ColorDesign Artic Blond Shampoo and condition with ColorDesign's Reconstruction Mask. Style as desired.

#SimplyLuxuriousColor

