



COLORDESIGN[®]

24K FOILING TECHNIQUE



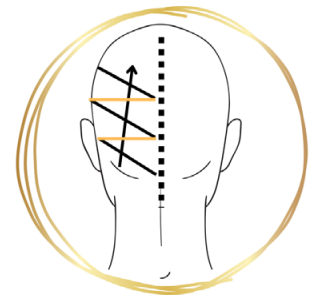
This alternative Blonding Technique can be achieved utilizing Shiny Blond and toning with ColorDesign's Light Grey Corrector.

- Shiny Blond
- Developer Choice
- 50G Light Grey
- 75G 5 Volume Developer

STEP 01

Back left quadrant

Create a horizontal parting at the top of the ear. Starting on the right, create a diagonal back foil at about a 45 degree angle. Then starting at the left side of previous foil, place a horizontal foil. Repeat placement for a total of 5 foils.



STEP 02

Back right quadrant

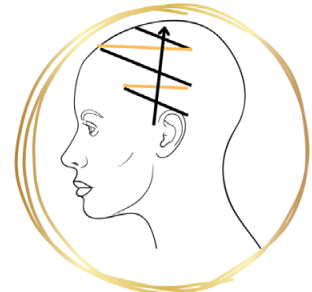
Create a horizontal parting at the top of the ear. Starting on the left create a diagonal back foil at about a 45 degree angle. Then starting at right side of previous foil, place a horizontal foil. Repeat placement for a total of 5 foils.



STEP 03

Front left quadrant

Section out top from bottom, using the recession area as a reference. Repeat the same pattern, alternating diagonal back and horizontal foils, for a total of 5.



STEP 04

Front right quadrant

Section out top from bottom, using the recession area as a reference. Repeat the same pattern, alternating diagonal back and horizontal foils, for a total of 5.



#Simply *Luxurious* Color

