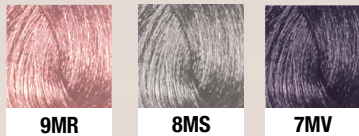


METALLIC MELT

Inspiration Technique Kit



Developer 5 Volume / Mixing ratio 1:1 - 1 Part Color to 2 Parts Developer

Begin with pre-lightened hair.

Steps:

- 1** Divide the hair into 4 quadrants with top sections divided by desired part.
- 2** Begin in the back, apply the base color to the first 1-2" at the root.
As you work up the head, increase the amount of application down the strand to 2-3".
- 3** If hair is not previously lightened, you must complete the next step for true color reflection.
- 4** Apply Shiny Blond with developer of your choice, lift to a level 7 or higher.
- 5** Rinse, shampoo, condition, and dry the hair completely.
- 6** Starting in the back 2 quadrants, apply the base color 7MV to the first 1-2" at the root.
As you work up the head, increase the amount of application down the strand to 2-3" in the crown area. Then begin to apply 2-3 inches of the base color 7MV and work for ward through the front quadrants. As you work your way to the front of the head you will want to decrease the amount of application down the strand to 1-2".
- 7** To create the metallic melt alternate the 4 patterns listed below, blending each shade where they meet. We recommend using 5 volume for best results. Process for 35 minutes, rinse with cold water, gently shampoo and condition.

- Pattern 1** 7MV 1"----9MR remaining ends
- Pattern 2** 7MV 2"----8MS mid lengths to ends
- Pattern 3** 7MV Root to ends
- Pattern 4** 7MV 2-3"----8MS mid lengths----9MR ends

