

BRIGHT COOL WINTER BLONDE

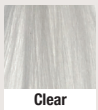
COLOR TECHNIQUE: Classic Weave Foils & Babylights with Shadow Root



7.01/ 7NA



10.12 / 10AV



Clear

Model

Natural level: 4/5

Desired level: 10

Who is the ideal client for this look?

The ideal client for a bright cool winter blonde hair color would typically have fair to medium skin with cool undertones, such as pink or blue. This hair color can complement their complexion and create a striking contrast.

How long does this look take and how is it priced?

The time it takes to achieve a bright cool blonde hair color can vary based on factors like the starting hair color, hair length, and the specific technique used. It generally involves a lightening process followed by toning to achieve the desired cool blonde shade. This can take several hours, possibly up to 4-6 hours or more in some cases.

Bright blonde colors often require multiple steps, which can increase the cost. Prices can range from a few hundred to several hundred dollars or more.

What is the maintenance schedule of this look?

Bright cool blonde requires regular care to keep the color vibrant and your hair healthy.

- **Root Touch-Ups:** Depending on how quickly your hair grows, you may need root touch-ups every 4-6 weeks to maintain a seamless color transition.
- **Toning:** Cool blonde shades can sometimes fade or develop unwanted warmth over time. Toning treatments every 2-4 weeks can help keep the color looking fresh and prevent brassiness.
- **Deep Conditioning:** Blonde hair can be more prone to dryness and damage. Use deep conditioning treatments at least once a week to keep your hair hydrated and smooth.

#Simply *Luxurious* Color



BRIGHT COOL WINTER BLONDE

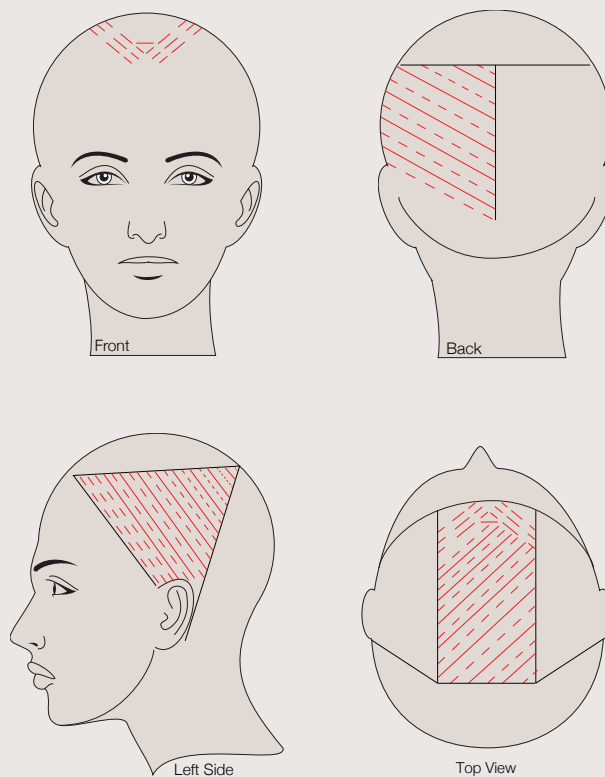
COLOR TECHNIQUE: Classic Weave Foils & Babylights with Shadow Root

Color Formulas

Slices	ColorDesign Powder blue lightener + 20 volume Colordesign Developer.
Weaves & Babylights	ColorDesign Shiny blonde + 20 volume Colordesign Developer.
Shadow Root	ColorDesign 7.01 ammonia free + 5 volume equal parts Colordesign Developer.
Gloss	ColorDesign 10.12 + Clear ammonia free equal parts + double 5 volume Colordesign Developer.

Formula steps

- 1 Section hair into 5 sections shown.
- 2 Starting from back left section alternate classic weave with micro, thin slices about 1/2 inch apart horizontally on a slight diagonal. Repeat this pattern on the back right side.
- 3 On the sides, starting from the hairline, apply, shiny blonde, baby lights to the first three foils, and then alternate weaves and slices with two Lightener formulas.
- 4 On the top section 1st three foils are baby lights connected by a bridge across which is a micro slice then continue on a diagonal, alternating classic weave and thin slices.
Process until desired level is achieved.
- 5 After shampoo/ condition/ towel drying, apply shadow root to the first 1 1/2 inch from scalp. Leave out hairline and money piece.
- 6 Apply gloss all over from shadow root to ends including hairline and money piece process for 15 min.



— Parting
— Sub sectioning & placement

#SimplyLuxuriousColor

