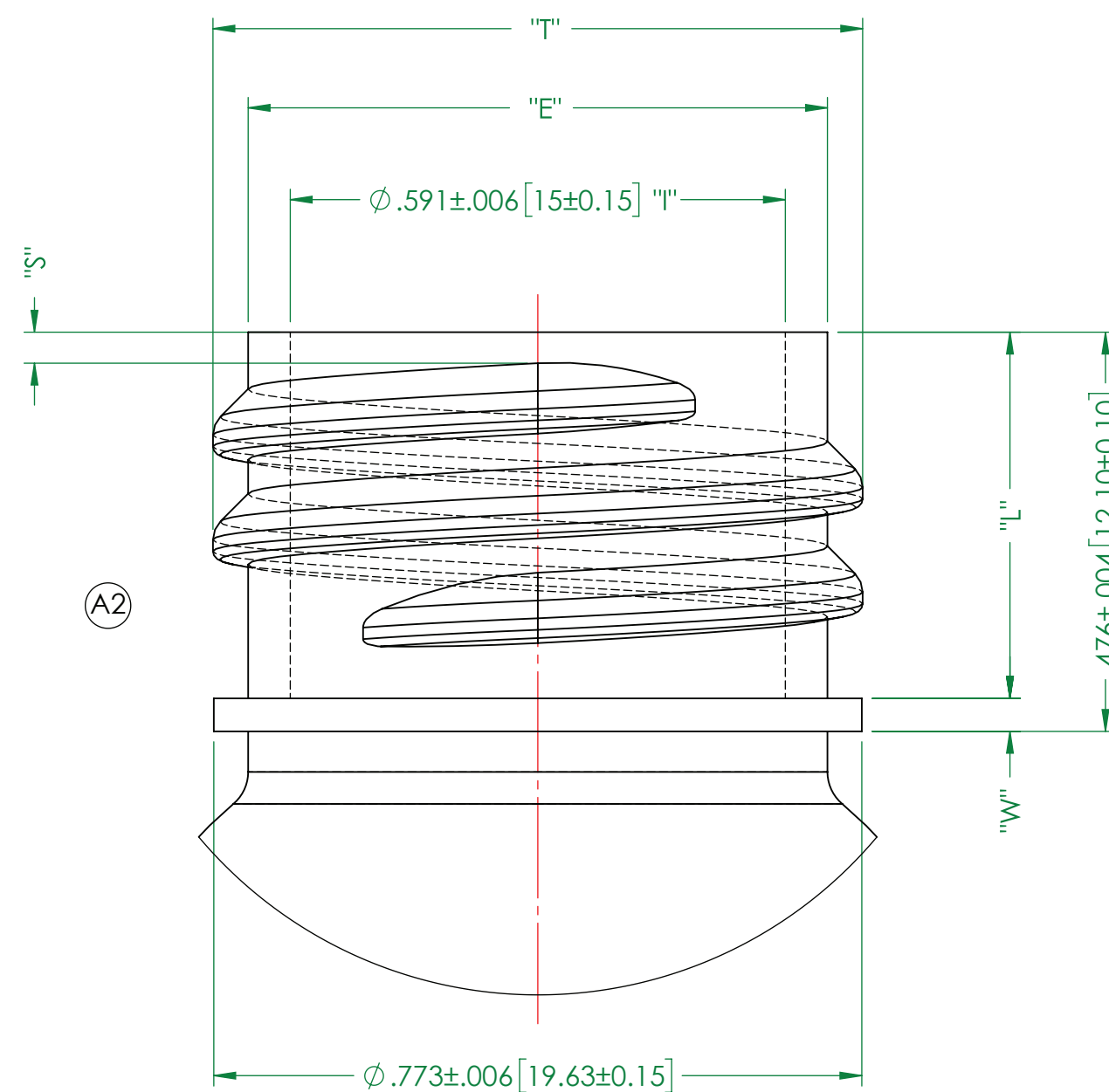
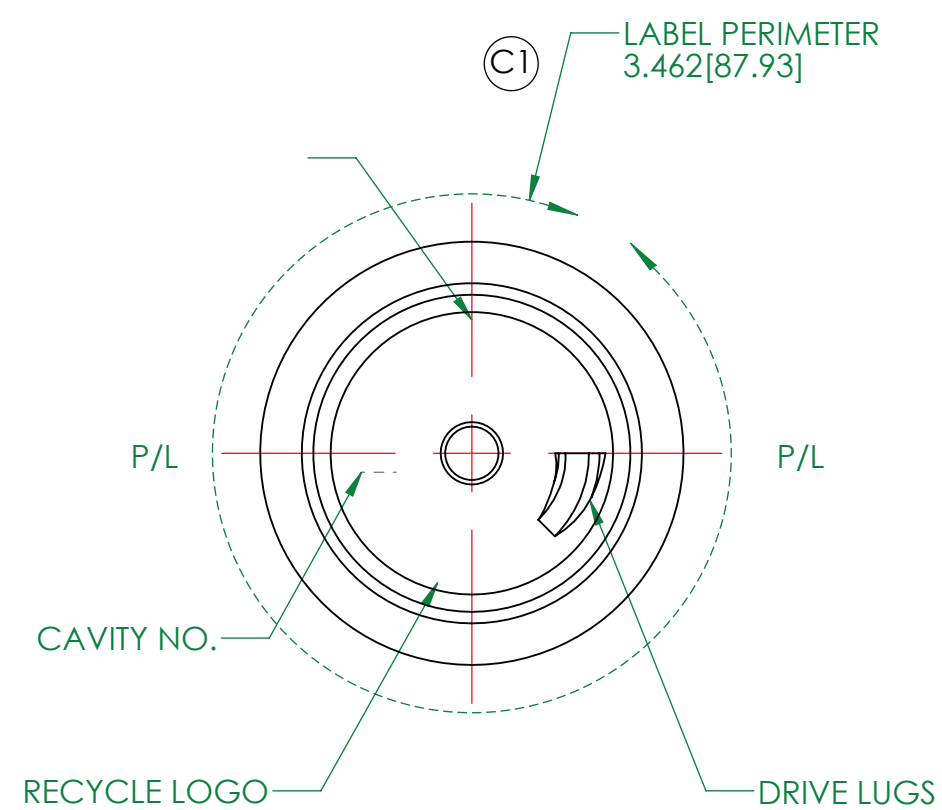


(B1) NOTE:
 MINIMUM WALL THICKNESS AT SHOULDER: 0.015"
 MINIMUM WALL THICKNESS AT PANEL: 0.010"
 MINIMUM WALL THICKNESS AT BASE: 0.010"



DETAIL A
 SCALE 5 : 1

C1	CML	DECO LABEL HEIGHT AND PERIMETER ADDED	JULY,31/20		
B1	CML	MINIMUM WALL THICKNESS NOTE ADDED	JULY,09/19		
A2	CML	M20-SP410 NECK 2 FULL TURNS WAS 1.5 TURNS	AUG,27/18		
A1	CML	OFC 38cc±2.5 WAS 40cc±5.0	AUG,27/18		
NO.	REV.	BY	DESCRIPTION	DATE	
NECK FINISH:		M20-SP410 SPECIAL	GRAM WT. 6.5g±1		
'T'	'E'	'H'	'S'	'L'	'W'
.775±.008	.691±.008	.585±.015	.037±.015	.437±.004	.039±.004
19.69±.20	17.55±.20	14.86±.38	0.94±.38	11.10±.10	1.00±.10
HELIX <:		3° 07'	T.P.I.:	8	CUTT. DIA.: .375 [9.53]
CAPACITY TO FILL LEVEL BEFORE DECORATING				29.6cc±5	
CAPACITY TO FILL LEVEL AFTER DECORATING				_____	
OVERFLOW CAPACITY BEFORE DECORATING				38cc±2.5 (A1)	
OVERFLOW CAPACITY AFTER DECORATING				_____	

DRAWN BY:	CML	DESC.	1 OZ. 20-410 Cosmo Round
SCALE:	2:1	DATE:	29/AUG/18
BOTTLE MAT'L:	PETE	DRAWING NO.	PB1903-MD
CAD NAME:	PD	MOULD NO.	