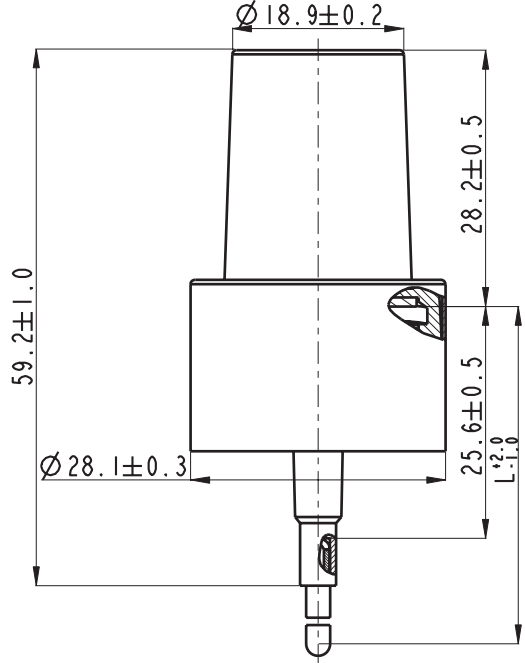


MARK	REVISER	DESCRITRN	DATE

- 15
- 14
- 13
- 12
- 11
- 10
- 9
- 8
- 7
- 6
- 5
- 4
- 3
- 2
- 1



Scale 1.200

$\varnothing 7.8 \pm 0.1$   
 $\varnothing 22.1 \pm 0.2$   
 $\varnothing 24.1 \pm 0.2 (PT=1/8")$

Section A-A

No.	Component	Material	Specification	Part No.	QTY	Remark
15	Overcap	PP	Color for order form	SLM606-07Y1	1	
14	Insert	POM	Color for order form	SLM606-11A1	1	
13	Actuator	PP	Color for order form	SLM606-08L1	1	
12	Stem	POM	Natural	SLM606-04C1	1	
11	Seal	LDPE	Natural	SLM606-22A1	1	
10	Gasket	PE	$\varnothing 21.7 \times 1.0$ thickness	SLM606-98D2	1	
9	Short Spring	304H	$\varnothing 0.53 \times 7.2L \times 5.5$ circle	SLM606-96A1	1	
8	Piston	LDPE	Natural	SLM606-03A1	1	
7	Cone	POM	Natural	SLM606-17A1	1	
6	ALU.Closure	AL	Color for order form	SLM606-93H1	1	
5	Closure	PP	Color for order form	SLM606-05K2	1	
4	Long Spring	304H	$\varnothing 0.45 \times 17.0L \times 13$ circle	SLM606-96B1	1	
3	Glass Ball	GLASS	$\varnothing 3.0$	SLM606-97A1	1	
2	Housing	PP	White W030	SLM606-01B1	1	
1	Dip Tube	LDPE	$\varnothing 2.65 \times 0.7$ thickness	SLM606-95B1	1	

M24410WPCFR6670-MD

TOLERANCE	○	□	○
0mm - 15mm	$\pm 0.05$	$\pm 0.10$	$\pm 0.50$
15mm - 30mm	$\pm 0.05$	$\pm 0.15$	$\pm 1.00$
30mm - 50mm	$\pm 0.10$	$\pm 0.20$	$\pm 1.50$
50mm - 99mm	$\pm 0.15$	$\pm 0.30$	$\pm 2.00$
ABOVE 99mm	$\pm 0.20$	$\pm 0.40$	$\pm 2.50$
CENTER	$\pm 0.10$	$\pm 0.50$	$\pm 1.00$
ANGLER	$\pm 0.25^\circ$	$\pm 0.50^\circ$	$\pm 2.00^\circ$

APPROVED: \_\_\_\_\_  
 CENSOR: \_\_\_\_\_  
 CHECKED: \_\_\_\_\_  
 DRAFTER: 2012.04.21

UNIT: mm  
 MODEL NAME: \_\_\_\_\_  
 SCALE: 5:2  
 PART NO. \_\_\_\_\_  
 TITLE: 24/410 Assemble  
 VISUAL ANGLE: Q'TY: 1/1  
 REV: A0  
 FILE NO. \_\_\_\_\_

