



1.0 & 1.5 GALLON COFFEE BREWING SYSTEM

CBS-1130 / 1150 EXTRACTOR® V+™ SERIES



The new Extractor® V+™ offers tremendous operator value at a competitive price. Equipped with the basic Extractor® features such as pulse brewing and the exclusive Cascading Spray Dome™, this coffee brewer produces a steady stream of hot, delicious coffee from the manufacturers of high-quality coffee equipment for over 30 years – FETCO.



CBS-1131 V+
Single Station Coffee Brewer*



CBS-1132 V+
Twin Station Coffee Brewer*



CBS-1151 V+
Single Station Coffee Brewer*



CBS-1152 V+
Twin Station Coffee Brewer*

* Dispensers sold separately.

FETCO®
TRUSTED | RELIABLE | QUALITY



CBS-1131/2 & 1151/2 Extractor V+ Coffee Brewers

The Extractor V+ comes standard with the basic features operators need to provide an efficient and reliable coffee service for any daypart.

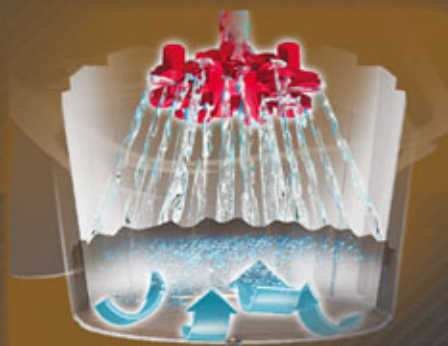
Extractor V+ Control Panel

- Control all brewing functions and diagnostic tools with the user-friendly digital touchpad. The screen prominently displays messages, numbers and symbols as you interact with the nimble brewer software. Each batch and stop button features a vibrant LED to easily recognize brew status and selection.



Revolutionary Cascading Spray Dome®

Exclusive to FETCO®! This unique, patented feature provides even saturation of the coffee bed for maximum flavor and aroma extraction. It resists lime build up which means fewer service calls and more time producing revenue.



Legendary Extractor® Controls

- The V+ comes standard with programmable extraction controls that are the cornerstone to producing precise volumes of the great-tasting coffee your customers demand. Bypass available on CBS-1150 series at an additional charge. Bypass not available on CBS-1130 series.





Efficient Design & Construction

- ▼ FETCO equipment is designed and built to standards well above most others and can deliver significant energy savings when compared to similar competitors' products.



Four Dispenser Types Offer Even More Flexibility

- ▼ Depending on your coffee service needs, choosing the right dispenser is easy with the LUXUS® line of matching Thermal Servers, Dispensers and Airpots. Dispensers sold separately.



Common Internal Parts

- ▼ Keep inventory and service costs down with interchangeable parts on the XT5™ systems and other V+ models.





Water Specification

Water Inlet 3/8" Male Flare Fitting	Minimum Flow Rate 2 gpm [7.6 lpm]	Water Pressure 20-75 psig [138-517 kPa]
---	---	---

VERY IMPORTANT! To help prevent mechanical issues and extend the life of your equipment, connect to a proper water filtration system.

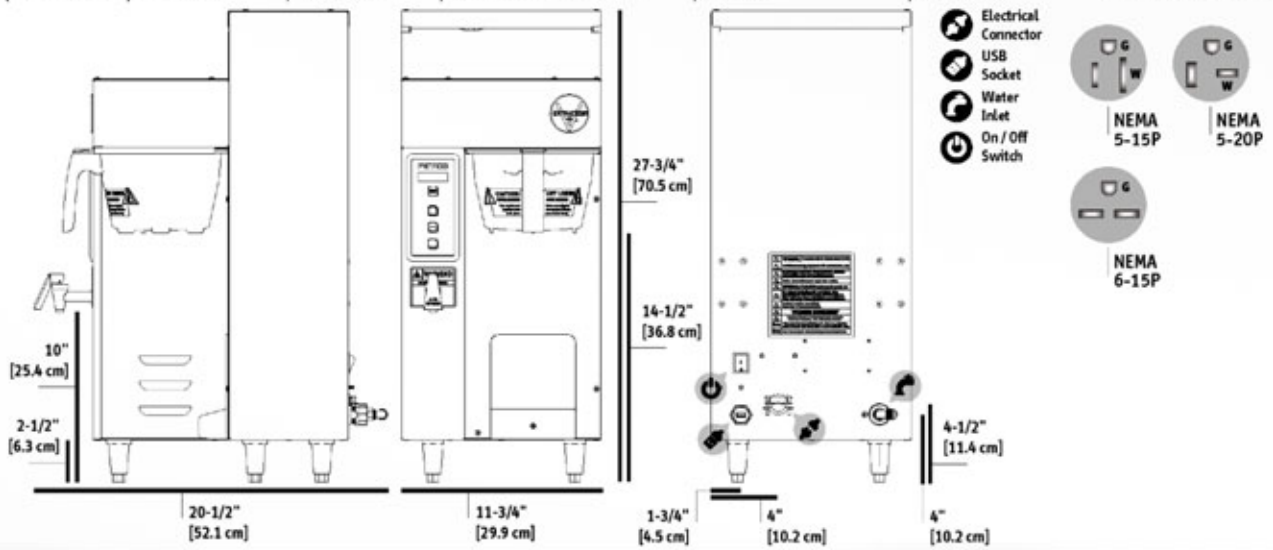
Electrical Configuration

Configuration Code	Heater Configuration	Voltage	Phase	Wires	KW	Electrical Connection	Max Amp Draw	Gallon [Liter]/Hour
USA & CANADA								
E113153 ⁽¹⁾	1 x 1.5 kW	100-120	1	2+G	1.6	NEMA 5-15P ⁽²⁾	13.0	3.9 [14.8] ⁽³⁾
E113151 ⁽¹⁾	1 x 2.3 kW	100-120	1	2+G	2.4	NEMA 5-20P ⁽²⁾	19.7	5.8 [22.0] ⁽³⁾
E113157 ⁽¹⁾	1 x 3.0 kW	200-240	1	2+G	3.1	NEMA 6-15P	13.0	7.7 [29.1] ⁽³⁾

(1) Comes standard with plastic brew basket. Metal brew basket available at additional cost.
 (2) Sold with factory cord & plug for 120 Volt configuration.
 (3) Based on standard factory settings: 5.5 minute brew time; 0% prewet; 200°F water. 1 gallon / 3.8 liters per batch.

Measurements

Height 27 3/4" [70.5 cm]	Width 11 3/4" [29.9 cm]	Depth 20 1/2" [52.1 cm]	Empty Weight 29 lbs [13.2 kg]	Filled Weight 55 lbs [25.0 kg]	Combined Filled Weight 66 lbs [30.0 kg] <small>BREWER + 1 FILLED D063 DISPENSER</small>	Hot Water Tank Cap. 3.5 gal [13.2 l]	Shipping Weight: 41 lbs [18.6 kg]	Shipping Dimensions: 30" x 17" x 22" [76.2 x 43.2 x 55.9 cm]
---------------------------------------	--------------------------------------	--------------------------------------	--	---	--	---	--	---



- Electrical Connector
- USB Socket
- Water Inlet
- On / Off Switch
- NEMA 5-15P
- NEMA 5-20P
- NEMA 6-15P

Compatible Dispensers

#D041
3.0 Liter Thermal Pump Lever Airpot

Product Dimensions (HxWxD):
14 5/8" x 7" x 9"
[37.1 x 17.8 x 22.9 cm]
Weight (Empty / Filled)
4.6 lbs [2.1 kg] /
11.2 lbs [5.1 kg]

#D063
1.0 Gallon Thermal Pump Lever Airpot

Product Dimensions (HxWxD):
16 1/2" x 7" x 9"
[47.0 x 17.8 x 22.9 cm]
Weight (Empty / Filled)
9.0 lbs [4.1 kg] /
13.3 lbs [6.0 kg]

#D451
L4S-10
1.0 Gallon LUXUS™ Thermal Dispenser

Product Dimensions (HxWxD):
13 1/2" x 8" x 11 1/2"
[34.2 x 20.3 x 29.2 cm]
Weight (Empty / Filled)
5.6 lbs [2.5 kg] /
12.4 lbs [5.6 kg]

Serving Stations

#A147
S4S-10-1
Single Serving Station for L4S-10 Server

#A148
S4S-10-2
Twin Serving Station for L4S-10 Server

#A149
S4S-10-3
Triple Serving Station for L4S-10 Server

Paper Filter

#F002
13" x 5.5"
Standard Paper Coffee Filter

Brew Basket

#B003218B1
13" x 5"
Stainless Steel Brew Basket

#B014218B2
13" x 5"
Plastic Brew Basket w/ Brown Insert

Cups per Hour*

8oz. 123	12oz. 82	16oz. 62	20oz. 49
-------------	-------------	-------------	-------------

Colored Brew Basket Handle Inserts

Blue: 1023.00180.00	Red: 1023.00190.00	Green: 1023.00191.00	Orange: 1023.00192.00
------------------------	-----------------------	-------------------------	--------------------------



Water Specification

Water Inlet 3/8" Male Flare Fitting	Minimum Flow Rate 2 gpm [7.60 lpm]	Water Pressure 20-75 psig, [138-517 kPa]
---	--	--

VERY IMPORTANT! To help prevent mechanical issues and extend the life of your equipment, connect to a proper water filtration system.

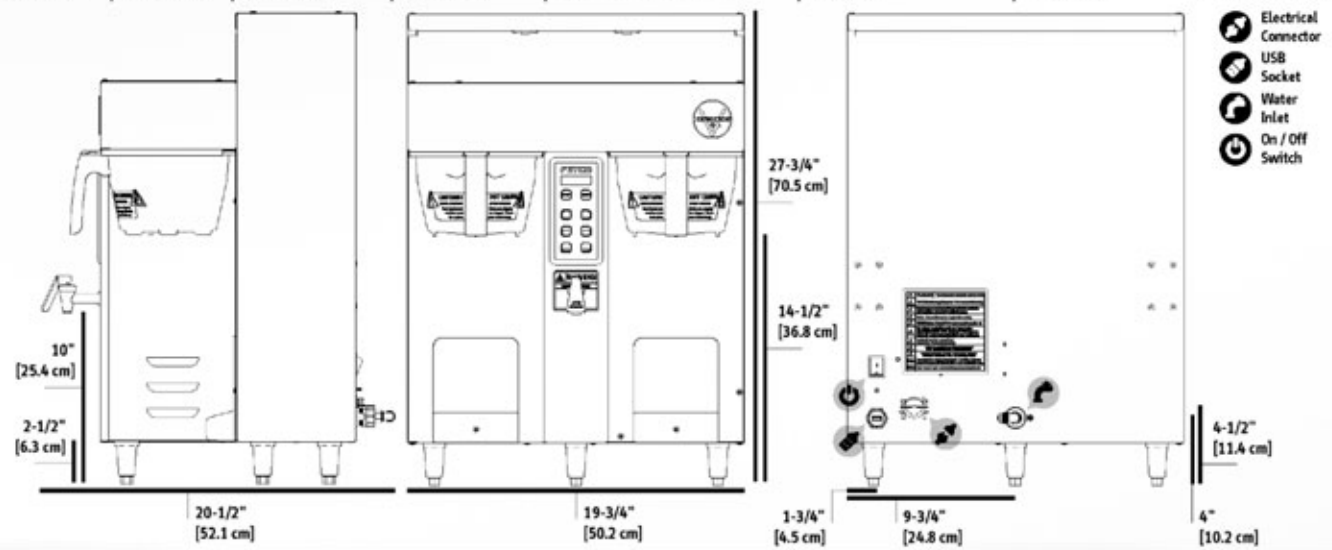
Electrical Configuration

Configuration Code	Heater Configuration	Voltage	Phase	Wires	KW	Electrical Connection	Max Amp Draw	Gallon [Liter]/Hour
USA & CANADA								
E113251 ⁽¹⁾	2 x 2.3 kW	200-240	1	2+6	4.7	Terminal Block	19.7	11.5 [43.5] ⁽²⁾
E113252 ⁽¹⁾	2 x 3.0 kW	200-240	1	2+6	6.1	Terminal Block	25.5	14.0 [53.0] ⁽²⁾

(1) Comes standard with plastic brew basket. Metal brew basket available at additional cost.
 (2) Based on standard factory settings: 5.5 minute brew time; 0% prewet; 200°F water. 1 gallon / 3.8 liters per batch.

Measurements

Height 27 3/4" [70.5 cm]	Width 19 3/4" [50.2 cm]	Depth 20 1/2" [52.1 cm]	Empty Weight 47 lbs [21.3 kg]	Filled Weight 92 lbs [41.7 kg]	Combined Filled Weight 115 lbs [51.9 kg] <small>BREWER + 2 FILLED DOGJ DISPENSERS</small>	Hot Water Tank Cap. 6.4 gal [24.0 l]	Shipping Weight: 55 lbs [25.0 kg]	Shipping Dimensions: 30" x 23" x 25" [76.2 x 58.4 x 63.5 cm]
---------------------------------------	--------------------------------------	--------------------------------------	--	---	--	---	--	---



Compatible Dispensers

#D041
3.0 Liter Thermal Pump Lever Airpot

Product Dimensions (HxWxD):
14 5/8" x 7" x 9"
[37.1 x 17.8 x 22.9 cm]
Weight (Empty / Filled)
4.6 lbs [2.1 kg] /
11.2 lbs [5.1 kg]

#D063
1.0 Gallon Thermal Pump Lever Airpot

Product Dimensions (HxWxD):
16 1/2" x 7" x 9"
[47.0 x 17.8 x 22.9 cm]
Weight (Empty / Filled)
9.0 lbs [4.1 kg] /
13.3 lbs [6.0 kg]

#D451
L4S-10
1.0 Gallon LUXUS™ Thermal Dispenser

Product Dimensions (HxWxD):
13 1/2" x 8" x 11 1/2"
[34.2 x 20.3 x 29.2 cm]
Weight (Empty / Filled)
5.6 lbs [2.5 kg] /
12.4 lbs [5.6 kg]

* Must be used with S4S Serving Stations.

Serving Stations

#A147
S4S-10-1
Single Serving Station for L4S-10 Server

#A148
S4S-10-2
Twin Serving Station for L4S-10 Server

#A149
S4S-10-3
Triple Serving Station for L4S-10 Server

Paper Filter

#F002
13" x 5.5"
Standard Paper Coffee Filter

Brew Basket

#B003218B1
13" x 5"
Stainless Steel Brew Basket

#B014218B2
13" x 5"
Plastic Brew Basket w/ Brown Insert

Cups per Hour*

8oz. 224	12oz. 149	16oz. 112	20oz. 90
-------------	--------------	--------------	-------------

Colored Brew Basket Handle Inserts

Blue: 1023.00180.00	Red: 1023.00190.00	Green: 1023.00191.00	Orange: 1023.00192.00
------------------------	-----------------------	-------------------------	--------------------------



MANUFACTURED IN THE USA



Water Specification

Water Inlet 3/8" Male Flare Fitting	Minimum Flow Rate 1 1/2 gpm [5.7 lpm]	Water Pressure 20-75 psig [138-517 kPa]
--	--	--

VERY IMPORTANT! To help prevent mechanical issues and extend the life of your equipment, connect to a proper water filtration system.

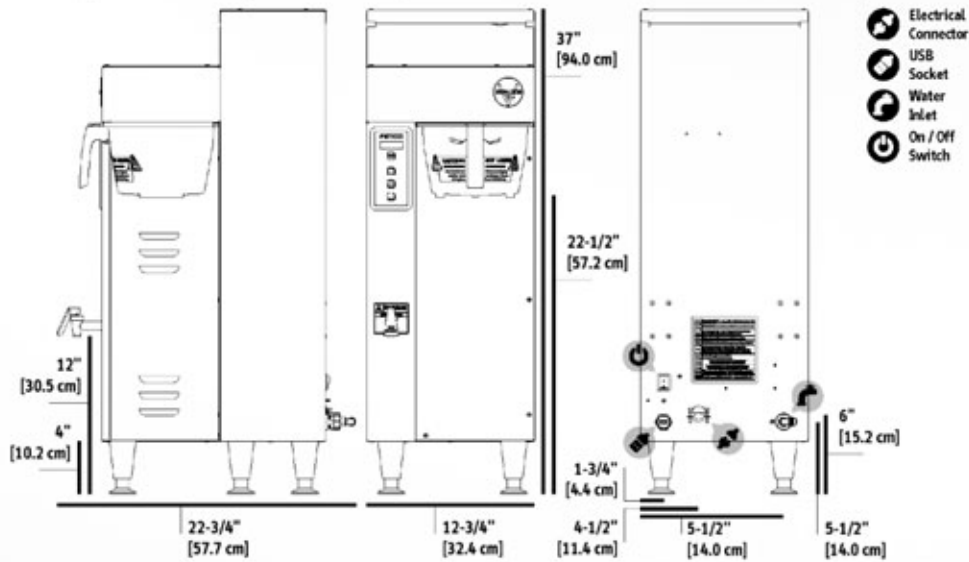
Electrical Configuration

Configuration Code	Heater Configuration	Voltage	Phase	Wires	KW	Electrical Connection	Max Amp Draw	Gallon [Liter]/Hour
NORTH AMERICA E115151 ⁽¹⁾	2 x 3.0 kW	208-240	1	2+G	4.6-6.1	Terminal Block	22.4-25.8	15.3 [58.0] ⁽²⁾

(1) Comes standard with plastic brew basket. Metal brew basket and bypass feature available at additional cost.
 (2) Based on standard factory settings: 5.5 minute brew time; 0% prewet; 200°F water. 1.5 gallon / 6 liters per batch.

Measurements

Height 37" [94.0 cm]	Width 12 3/4" [32.4 cm]	Depth 22 3/4" [57.7 cm]	Empty Weight 53 lbs [24.0 kg]	Filled Weight 106 lbs [48.0 kg]	Combined Filled Weight 129 lbs [59.0 kg] <small>BREWER + 1 FILLED L4D-15 DISPENSER</small>	Hot Water Tank Cap. 6.3 gal [24.0 l]	Shipping Weight: 57 lbs [26.0 kg]	Shipping Dimensions: 37" x 18" x 24" [94.0 x 45.7 x 61.0 cm]
----------------------------	-------------------------------	-------------------------------	-------------------------------------	---------------------------------------	--	--	---	--



Compatible Dispensers

#D009
TPD-15
1.5 Gallon
LUXUS®
Portable
Thermal
Dispenser



Product Dimensions
(HxWxD):
24 1/8" x 9 5/16" x 13 7/8"
[61.3 x 23.7 x 35.2 cm]
Weight (Empty / Filled)
12.8 lbs [5.8 kg] /
24.7 lbs [11.2 kg]

#D449
L4D-15
1.5 Gallon
LUXUS®
Thermal
Dispenser



Product Dimensions
(HxWxD):
23" x 9" x 13 1/4"
[58.4 x 22.9 x 33.6 cm]
Weight (Empty / Filled)
10.5 lbs [4.8 kg] /
22.4 lbs [10.2 kg]

#D452
L4S-15
1.5 Gallon
LUXUS®
Thermal
Server*



Product Dimensions
(HxWxD):
14 3/4" x 9" x 12 1/2"
[37.4 x 22.9 x 31.7 cm]
Weight (Empty / Filled)
7.2 lbs [3.3 kg] /
17.6 lbs [8.0 kg]

Serving Stations

#A150
S4S-15-1
Single Serving Station
for L4S-15 Servers



#A151
S4S-15-2
Twin Serving Station
for L4S-15 Servers



#A152
S4S-15-3
Triple Serving Station
for L4S-15 Servers



* Must be used with S4S Serving Stations.

Paper Filter

#F001
15" x 5.5"
Standard Paper
Coffee Filter



Brew Basket

#B001280B1
16" x 6"
Stainless Steel
Brew Basket



#B015280BN2
16" x 6"
Plastic Brew Basket
w/ Brown Insert



Cups per Hour*

8oz. 248	12oz. 165	16oz. 124	20oz. 99
-------------	--------------	--------------	-------------

* Approximate based on maximum power setting.

Colored Brew Basket Handle Inserts

Blue: 1023.00180.00	Red: 1023.00190.00	Green: 1023.00191.00	Orange: 1023.00192.00
------------------------	-----------------------	-------------------------	--------------------------



Water Specification

Water Inlet 3/8" Male Flare Fitting	Minimum Flow Rate 1 1/2 gpm [5.7 lpm]	Water Pressure 20-75 psig, [138-517 kPa]
---	---	--

VERY IMPORTANT! To help prevent mechanical issues and extend the life of your equipment, connect to a proper water filtration system.

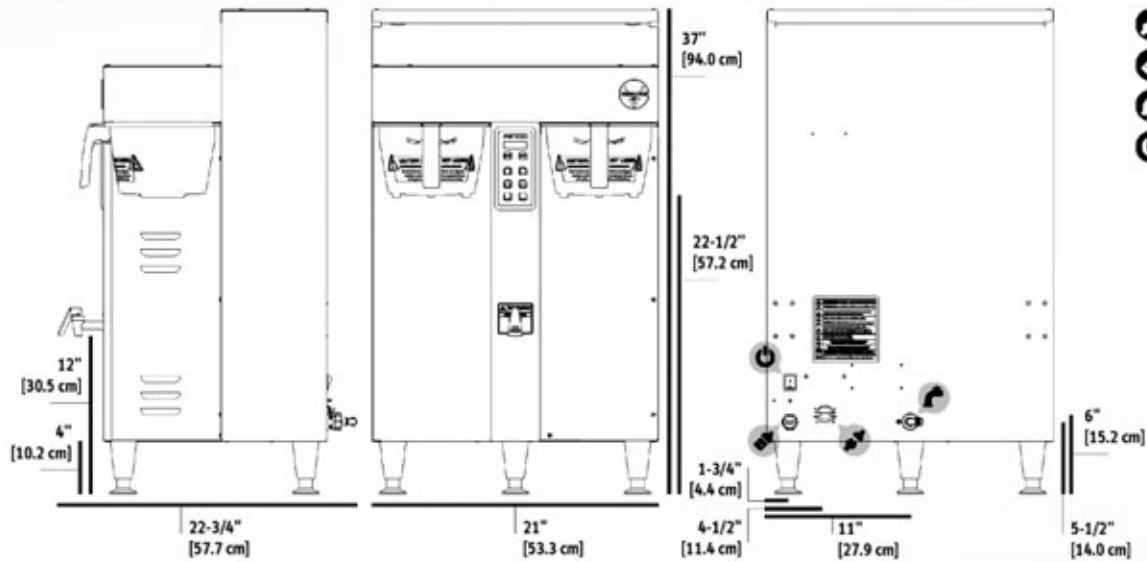
Electrical Configuration

Configuration Code	Heater Conf.	Voltage	Phase	Wires	KW	Electrical Connection	Max Amp Draw	Gallon [Liter]/Hour
NORTH AMERICA								
E115251⁽¹⁾	2 x 3.0 kW	208-240	1	2+G	4.6-6.1	Terminal Block	22.4-25.8	15.3 [58.0] ⁽²⁾
	3 x 3.0 kW	208-240	3	3+G	6.9-9.1	Terminal Block	19.5-22.5	22.5 [85.0] ⁽²⁾
E115252⁽¹⁾	2 x 5.0 kW	208-240	1	2+G	7.6-10.1	Terminal Block	36.9-42.5	25.3 [97.0] ⁽²⁾
	3 x 5.0 kW	208-240	3	3+G	11.4-15.1	Terminal Block	32.0-36.9	38.3 [145.0] ⁽²⁾

(1) Comes standard with plastic brew basket. Metal brew basket and bypass feature available at additional cost.
 (2) Based on standard factory settings: 5.5 minute brew time; 0% prewet; 200°F water; 1.5 gallon / 6 liters per batch.

Measurements

Height 37" [94.0 cm]	Width 21 3/4" [55.2 cm]	Depth 22 3/4" [57.7 cm]	Empty Weight 77 lbs [35.0 kg]	Filled Weight 174 lbs [78.0 kg]	Combined Filled Weight 220 lbs [99.0 kg] <small>BREWER + 2 FILLED L4D-15 DISPENSERS</small>	Hot Water Tank Cap. 11.5 gal [44.0 l]	Shipping Weight: 97 lbs [44.0 kg]	Shipping Dimensions: 37" x 24" x 27" [94.0 x 61.0 x 68.6 cm]
-----------------------------------	--------------------------------------	--------------------------------------	--	--	--	--	--	---



- Electrical Connector
- USB Socket
- Water Inlet
- On / Off Switch

Compatible Dispensers

<p>#D009 TPD-15 1.5 Gallon LUXUS® Portable Thermal Dispenser</p> <p>Product Dimensions (HxWxD): 24 1/8" x 9 5/16" x 13 7/8" [61.3 x 23.7 x 35.2 cm] Weight (Empty / Filled) 12.8 lbs [5.8 kg] / 24.7 lbs [11.2 kg]</p>	<p>#D449 L4D-15 1.5 Gallon LUXUS® Thermal Dispenser</p> <p>Product Dimensions (HxWxD): 23" x 9" x 13 1/4" [58.4 x 22.9 x 33.6 cm] Weight (Empty / Filled) 10.5 lbs [4.8 kg] / 22.4 lbs [10.2 kg]</p>	<p>#D452 L4S-15 1.5 Gallon LUXUS® Thermal Server*</p> <p>Product Dimensions (HxWxD): 14 3/4" x 9" x 12 1/2" [37.4 x 22.9 x 31.7 cm] Weight (Empty / Filled) 7.2 lbs [3.3 kg] / 17.6 lbs [8.0 kg]</p>
---	---	---

Serving Stations

<p>#A150 S4S-15-1 Single Serving Station for L4S-15 Servers</p>	<p>#A151 S4S-15-2 Twin Serving Station for L4S-15 Servers</p>	<p>#A152 S4S-15-3 Triple Serving Station for L4S-15 Servers</p>
--	--	--

Paper Filter

#F001
15" x 5.5"
Standard Paper
Coffee Filter

Brew Basket

<p>#B001280B1 16" x 6" Stainless Steel Brew Basket</p>	<p>#B015280BN2 16" x 6" Plastic Brew Basket w/ Brown Insert</p>
---	--

* Must be used with S4S Serving Stations.

Cups per Hour*

8oz. 614	12oz. 410	16oz. 307	20oz. 246
-------------	--------------	--------------	--------------

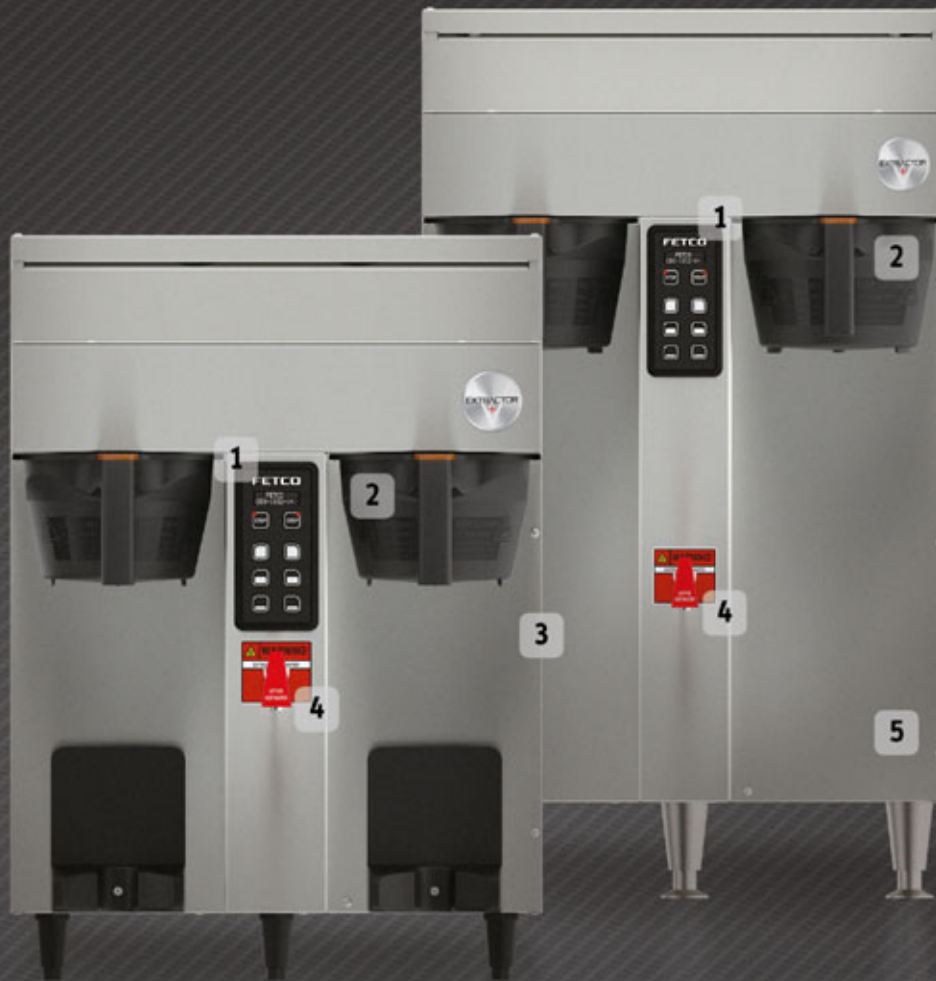
Colored Brew Basket Handle Inserts

Blue: 1023.00180.00	Red: 1023.00190.00	Green: 1023.00191.00	Orange: 1023.00192.00
---------------------	--------------------	----------------------	-----------------------



MANUFACTURED IN THE USA

Exterior Features & Benefits



Feature	Benefit
1 > Touchpad Controls	Touchpad with bright LEDs for easy programming and batch identification.
2 > Durable Brew Basket	Durable plastic construction with removable color ID insert and built-in counter stand for easy brew prep.
3 > Mixed Material Construction	Mixed material is attractive and comfortable in any front-of-house setting.
4 > Manual Water Faucet	Safely dispenses hot water away from steam and brew basket.
5 > Stainless Steel Finish	Withstands the harshest foodservice environments and is durable and easy to clean.


Dispensers sold separately.



FETCO

© Copyright 2017 FETCO® is a mark of Food Equipment Technologies Company.

#BR14134 R.1

 fetco.com

 info@fetco.com

 847.719.3000
1.800.338.2699 USA
 847.719.3001

 Food Equipment Technologies Co.
600 Rose Road
Lake Zurich, IL 60047
USA