

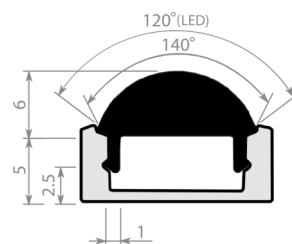
LED PROFILES

30° Lens

30° LENS

Converts LED light emission to 60° beam. Available in Opal, Clear or Ice

Diffuser: Opal [O] | Clear [C] | Ice [I]

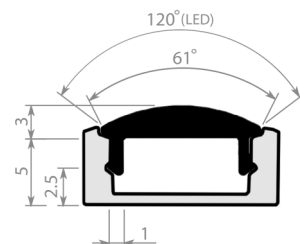


60° Lens

60° LENS

Converts LED light emission to 60° beam. Available in Opal, Clear or Ice

Diffuser: Opal [O] | Clear [C] | Ice [I]



ALU Asymmetric

ALUASYM

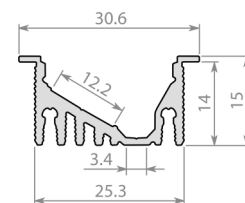
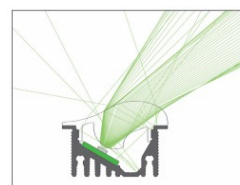
A recessed aluminium LED profile with an asymmetric optic lens which redirects the light beam at an angle of 55/65°. This profile is an ideal solution for kitchen cabinet lighting, shelf lighting and ceiling wall washing.

Light source: LED Ribbon (Sold separately)

Dimensions mm: H15 x W25.3 (Including flange 30.6)

Diffuser: Opal [O]

Accessories: Aluminum End Cap [AEC]



ALU 20

ALU20

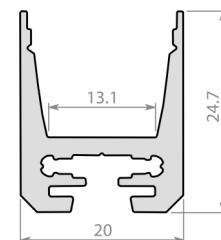
LED profile with a polycarbonate diffuser for surface or suspended application.

Light source: LED Ribbon (Sold separately)

Dimensions mm: H24.7 x W20

Diffuser: Opal [O]

Accessories: Aluminum End Cap [AEC]



ALU Box

ALUBOX

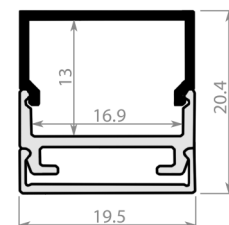
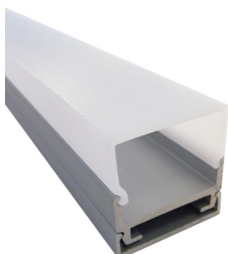
LED profile with a polycarbonate diffuser.

Light source: LED Ribbon (Sold separately)

Dimensions mm: H20.4 x W19.5

Diffuser: Opal [O] | Clear [C]

Accessories: End cap [EC] | End Cap with Cable Entry [ECH] | Mounting Bracket [MB]



ALU REC

ALUREC

LED profile with a polycarbonate diffuser.

Light source: LED Ribbon (Sold separately)

Dimensions mm: H38.3 x W19.5

Diffuser: Opal [O] | Clear [C]

Accessories: End Cap [EC] | End Cap with Cable Entry [ECH] | Mounting Bracket [MB]

