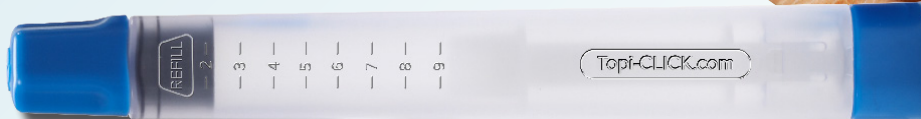


**NEW!**

Industry advancement in topical  
micro-dosing for humans and pets

Topi-CLICK  
**MICRO**<sup>®</sup>



Choose Topi-CLICK Micro<sup>®</sup> for The Best User Experience<sup>™</sup>



✓ Accurate metered micro-dosing  
for patients

✓ Choice of 3 applicator styles for  
customized dosing



Rounded  
Applicator<sup>™</sup>



Soft Angled  
Applicator<sup>™</sup>



Pin Point  
Applicator<sup>™</sup>

✓ Micro Quick-fill Technology<sup>™</sup> for  
compounders

Topi-CLICK Micro<sup>®</sup> Patent Pending

**Micro Quick-fill Technology**<sup>™</sup>  
Save time and money in the pharmacy

Fill directly  
from a syringe  
with Micro's<sup>®</sup>  
Luer Lock Tip



Fill directly from  
a mixing jar with  
the Micro EMP  
Jar Quick-fill  
Adaptor<sup>™</sup>



**ONE**  
is easier  
than a  
**HANDFUL!**



Request **FREE** Topi-CLICK Micro<sup>®</sup> Samples at  
**DoseLogix.com | 877.870.8448 | info@DoseLogix.com**

**DOSELOGIX**

Topi-CLICKMICRO\_071519

Copyright © 2019 DoseLogix, LLC All Rights Reserved.

## Introducing

# Topi-CLICK MICRO<sup>®</sup>

Revolutionary way to accurately & easily micro-dose topical medications for humans & pets



Easy Screw Cap

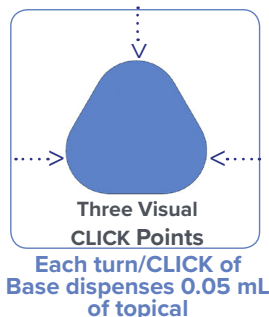
Choice of three applicators

Standard Luer Lock Connection

REFILL Indicator



Innovative TRIAD Shape Allows Precision Application Control



1 CLICK = 0.05 mL  
2 CLICKs = 0.10 mL  
3 CLICKs = 0.15 mL

## The Topi-CLICK Micro<sup>®</sup> Difference

### Accurate & Consistent Dose<sup>™</sup>

- Topi-CLICK Micro<sup>®</sup> is the most accurate among those in a patient simulation test.
- Eliminates user-variability
- Consistent automated dosing throughout treatment

### Automated Metered Dosing

- Audible, Tactile and Visual CLICKs indicate measure of dose at each point of the unique triad-shaped base (One CLICK = 0.05 mL)

### Targeted Topical Therapy

- Innovative triad-shaped dispenser allows for precision handling during application
- Applicator reduces the risk of hand transference to others
- Offers applicator selections for customized dosing

Select one of 3 applicators



Rounded Applicator<sup>™</sup>



Soft Angled Applicator<sup>™</sup>



Pin Point Applicator<sup>™</sup>

### Viscosity Assurance<sup>™</sup>

- Accuracy NOT affected by varying formulations
- Accuracy NOT affected by varying bases

Dispense/CLICK: 0.05 mL  
Dispenser Volume: Up to 9.75 mL  
Total Delivery Volume: Up to 9.45 mL

Approx. Residual: 0.15 mL  
Approx. Priming: 0.15 or 3 CLICKs

Made of FDA grade materials | Phthalate free | blocks UV and is Recyclable ♻️.

## Topi-CLICK MICRO® User Instructions

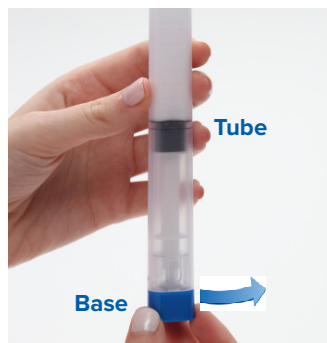


Topical Micro-dosing Application

- ✓ Automated, metered topical dosing provides an accurate and consistent dose every time
- ✓ Audible, Tactile and Visual CLICKs indicate measure of dose (no need to manually mark dose)
- ✓ Innovative triad-shape allows for precision handling
- ✓ Built-in REFILL Badge helps patients reorder medication on-time



**STEP 1:**  
Unscrew the cap of the Topi-CLICK Micro® and set aside for recapping after use.



**STEP 2:**  
Holding the Micro® in an upright position, turn/CLICK the **Base** the number of CLICKs or mLs specified on the prescription label. Use the Audible, Tactile and Visual CLICK points of the triad-shaped **Base** as dosing indicators. Be sure to align **Base** with the **Triad Tube** to ensure dose is fully dispensed.



**STEP 3:**  
Apply topical medication with built-in applicator as directed by physician or pharmacist. **Continue rubbing until preparation is completely absorbed into the skin.**  
**IMPORTANT:** The built-in applicator lessens the risk of transference to unintended areas. No need to use your fingertips to apply medication.



**STEP 4:**  
Screw on cap after each dose to prevent evaporation. Be sure cap is secured completely.

Innovative  
TRIAD Shape  
Allows Precision  
Application  
Control

Each turn/Click of the base  
dispenses 0.05 mL of  
medication accurately.

### REFILL Badge™



REFILL  
Line

Plunger

**The Refill Badge™ reminder system helps patients reorder in a timely manner.**

When the **TOP** black line of the **Plunger** reaches the embossed line below the word "REFILL" approximately 32 CLICKs are left. Approximately 12 CLICKs remain at the line above the word "REFILL".

*Note: Graduated Marks are for pharmacy filling purposes only. Follow instructions on prescription label before use. Topi-CLICK Micro® is not re-fillable.*

Made of FDA grade materials | Phthalate free | blocks UV and is Recyclable ♻️.

## Topi-CLICK<sup>®</sup> MICRO<sup>®</sup>

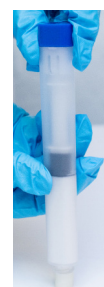
**Micro Quick-Fill Technology<sup>™</sup>**  
**Makes Filling Fast & Simple**



**Note: Graduated Lines** are for filling only and not for patients. **Top** black line of the plunger indicates **Fill Volume**. The embossed **Refill Badge** helps patients reorder medication in a timely manner.



Select one of 3 applicators



**Step 1: Filling**  
**Syringe Tip-to-Tip Filling-**  
Screw Luer syringe to the Luer lock tip of the Micro<sup>®</sup>.  
**Requires no extra Luer Lock adaptor.**

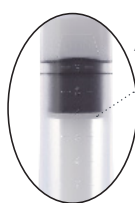
**EMP Jar Quick-fill Adaptor<sup>™</sup> Filling-** Screw on Topi-CLICK Micro<sup>®</sup> EMP Jar Quick-fill Adaptor<sup>™</sup>. Fill topical medications directly from mixing jar with this added Micro<sup>®</sup> accessory.

**Step 2: Applicator Tip Attachment -**  
Select Applicator Tip and press on by pushing straight down (important) against a hard surface.

**Note: Soft Angled Applicator<sup>™</sup>** placement requires tip to be aligned where lower slant of tip is on the same side as **Refill Badge of the Micro<sup>®</sup> tube**.



**Step 3: Priming the Micro<sup>®</sup>** Advance the actuator to engage plunger by manually turning/CLICKing base. The Actuator Bar should seat completely to the plunger before priming. **Actuator can also be advanced by using a mini cordless screwdriver to speed up the process (200 RPM Max). A Micro Driver Socket Bit<sup>™</sup> can be purchased for faster actuator advancement with a cordless mini screwdriver. (See Advancing Actuator Instructions.)**

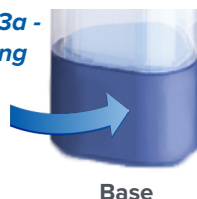


**Step 4: Cap Placement**  
Screw on cap securely to protect tip and prevent evaporation.



**Step 5: Label Application**  
Apply above the base opposite the "REFILL Badge" indicator.

**Step 3a - Priming**



Base

**Step 3a: Priming**  
Prime the Micro<sup>®</sup> by turning/CLICKing the base until contents are dispensed, then wipe off. Be sure to align Micro<sup>®</sup> base with the triad tube.  
**Approximate Priming: 0.15 mL or 3 CLICKS.**

**Dispense/CLICK: 0.05 mL**  
**Dispenser Volume: Up to 9.75 mL**  
**Total Delivery Volume: Up to 9.45 mL**

**Approx. Residual: 0.15 mL**  
**Approx. Priming: 0.15 mL or 3 CLICKS**



## Topi-CLICK<sup>®</sup> **MICRO<sup>®</sup>** Micro Quick-Fill Technology<sup>™</sup> Makes Filling Fast & Simple

### Instructions to Advance the Micro<sup>®</sup> Actuator with a Mini Cordless Screwdriver



#### Advancing the Actuator with a Mini Cordless Screwdriver

**Actuator** can be advanced by using a mini cordless screwdriver without a reversible trigger (200 RPM Max). Accidentally turning the base backwards could cause the Micro<sup>®</sup> to slip in your hand.

The BLACK & DECKER<sup>™</sup> 3.6 Volt Pink Rechargeable Electric Screwdriver is recommended.

A **Micro Driver Socket Bit<sup>™</sup>** can also be purchased for faster actuator advancement with a cordless screwdriver. (See info below.)

#### Topi-CLICK Micro<sup>®</sup> Driver Socket Bit<sup>™</sup> - SKU#: TC0910

The triad-shaped Micro driver is designed to perfectly conform to the Micro Base. It should be used with a 1/4 inch hex bit power screw driver. We recommend power drivers with a speed of 200 RPM or less to reduce the likelihood of damage to the Micro.

**Step 1:** Insert the **Micro Driver** into the screwdriver socket until it is properly seated. Depending on the manufacturer and model, there is usually a light click that lets you know when it is properly seated in the tool.

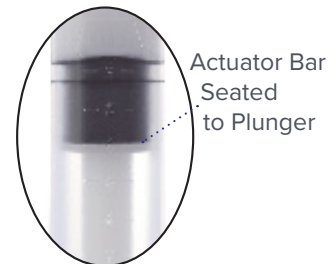
**Step 2:** Rotate the **Driver** in a clockwise direction to advance the **Micro Actuator** up the tube.



#### Notes:

*We recommend stopping the Actuator Bar 1 mL short of the target graduation (currently only for priming 6 mL or smaller prescriptions.)*

**Step 3:** Run up the **Actuator** using the **Actuator Bar** as a visual indicator. The **Actuator Bar** should seat completely to the plunger.



## Topi-CLICK **MICRO**® DoseLogix Laboratory Test Results

Product performed per design specifications. Device is both highly accurate and precise, demonstrating a tight variance and an average dose being 98.7% of the rated dose. Product performance variance was reduced for two CLICKs versus one CLICK.

Qualifies inspection and is passed.

### Accurate Micro-dosing Designed for Patients and Pets

#### Topi-CLICK Micro® Lifetime Dosing Accuracy

(1 CLICK or 0.05 mL)

(2 CLICKS or 0.10 mL)

Average Dose	0.049 mL	0.099 mL
Standard Deviation	0.003 mL	0.004 mL
Coefficient of Variation	5.7%	3.8%
Average Dose to Rated Volume	98.7%	98.7%

Dispense/CLICK: 0.05 mL

Dispenser Volume: Up to 9.75 mL

Total Delivery Volume: Up to 9.45 mL

Approx. Residual: 0.15 mL

Approx. Priming: 0.15 mL or 3 CLICKS

\*Volumes are approximate. As required for compounded prescription pharmaceuticals dispensed in volume dispensers; verify the weight to volume conversions thoroughly.

Made of FDA grade materials | Phthalate free | blocks UV and is Recyclable ♻️