



life without limit™

sky rider™ luxury

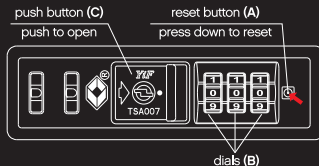
roll on board



TSA accepted luggage lock

Using this Travel Sentry® Approved lock allows your luggage to be opened, inspected and relocked by security authorities without damage.

For more information on the Travel Sentry® Approved lock, please visit www.travelsentry.org



TSA16009 instructions

The original combination is 0-0-0. To set your own combination please follow the steps below:

- 1) Turn the dials (B) to the original combination 0-0-0.
- 2) Press down the reset button (A) with a pen or other tool until you hear a 'click' sound.
- 3) Set your own combination by turning the dials (B)
- 4) Push the button (C) in the direction of the arrow until you hear the 'click' sound again.

To set another combination please repeat the steps above. Please remember your combination – if you forget it, there is no way to open your lock.

Note: When the dials are turned to incorrect combination, the zipper pullers can not be directly inserted to lock the luggage.

Warning: If the cylinder is opened, please lock it again by turning it in the direction of the arrow to red dot position (use any tool that fits in the cylinder).

