

# Nautilus™

# Owner's Manual

(Item #02810)



[www.ravesports.com](http://www.ravesports.com)

**Copyright ©** All rights reserved. No part of this publication may be reproduced or transmitted in any form or by any means, electronic or mechanical, including photocopy, recording, or any information storage and retrieval system, without permission in writing from the publisher. Requests should be mailed to RAVE Sports, 985 Aldrin Drive #301, Eagan, MN 55121.

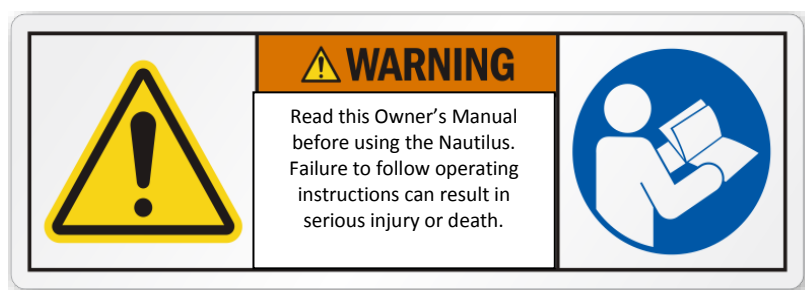


Table of Contents

Parts..... 2

Introduction ..... 3

Safety rules and liability ..... 4

EN-Warnings and maximum capacity ..... 6

Overview..... 7

Assembly ..... 8

Anchoring ..... 19

Use ..... 23

Additional attachment options..... 24

Cleaning, deflation and storage ..... 29

Repair ..... 30

Date Purchased: \_\_\_\_\_

Purchased from: \_\_\_\_\_

Serial Number: \_\_\_\_\_

(Serial # is located next to the inflation valve on the Main Body.)

Parts Included: see page 7 overview

- |  |                         |
|--|-------------------------|
| Qty 1- Main Body (#20946)                                | Qty 9 – Kwik Lok Straps |
| Qty 1- Drop Slide (#20948)                               | Qty 9 – Quick Links     |
| Qty 2- Speed Slide (#20947)                              | Qty 1 – Safety Curtain  |
| Qty 1- Owner Manual                                      | Qty 17 – Ball Bungees   |
| Qty 1- Repair Kit  |                         |
| Qty 1- 54” Boarding Platform (#02673) with Extender Flap |                         |

## Introduction

Thank you for purchasing a RAVE Sports® Nautilus. The Nautilus is an inflatable water slide and climbing apparatus intended for use by up to 10 adults or 15 children at one time while it is securely anchored in at least 10 feet of water.

This Owner's Manual is presented to enhance enjoyment of the product and is intended to alert users to the potentially dangerous conditions that can arise in all water sports. It also contains important safety instructions and information about how to assemble, use, maintain, and store the Nautilus.

Thoroughly read this manual before assembling and using the product. Although the product is simple to use, this manual contains important safety information that all users must understand to safely enjoy it.

Ensure that users also receive proper education and supervision and understand the safety instructions and warnings presented in this manual. Save this manual for future reference.

For answers to any questions regarding this product, call RAVE Sports at 1-800-659-0790 during the hours of 8:00 am to 4:30 pm Central Standard Time Monday – Friday or visit [www.ravesports.com](http://www.ravesports.com) at any time. Have your serial number available to help us better assist you.

### **WARNING**

**Unsafe use of the Nautilus can result in personal injury or death.**

**To reduce the risk of injury, read and follow all instructions and warnings in this manual. Do not use this product unless you understand and accept the risk of injury involved with this activity.**

## Safety Rules and Information

- Read and understand the information contained in this owner's manual before assembling and using your product.
- Ensure that users are aware of and understand these safety rules and warnings.
- The Nautilus is designed to be used on large bodies of water with water depth of at least 10 feet. Do not use or allow anyone else to use the product on land or any other hard surface, in recreational swimming pools, or within close range of other hard obstructions.
- Drowning Hazard: Never swim or play under the Nautilus.
- Choose a location for installation that is protected from wind, of sufficient water depth, and free of obstructions in all directions.
- Always anchor the Nautilus securely before it is used.
- Users must always wear a U.S. Coast Guard approved Type III personal flotation device (PFD) when using the Nautilus.
- Never use the product after sunset, before dawn, or during any other poor lighting conditions.
- Never use the product in rough surface water conditions, during storms, or when there is lightning. If an unexpected storm arises while using the product, seek shelter immediately on shore. Do not stay on the product.
- Never use the product under the influence of alcohol or drugs.
- Do not connect the Nautilus directly to docks, piers or other hard objects and ensure that the product is a safe distance from above water hard objects.
- Never tow the product from a boat or other motorized vehicle except when moving the product into anchoring position. Never tow with people on board the Nautilus.
- To avoid the possibility of a collision, ensure the area around the Nautilus is clear of obstructions and other swimmers before each use.
- Ask about local water conditions before using the product in unfamiliar water.
- Never use the product while tired or fatigued. Use extreme caution while swimming between the shore and the product. Do not attempt to swim this distance if you are tired or fatigued.

- Always inspect the areas around and under the product before each use to ensure the water is deep enough and free of all rocks, logs, sand bars, and underwater obstructions.
- Inspect your product for any worn, defective, or missing parts. Do not use if there are any signs of damage, wear or deterioration. Replace or repair before use.
- Never dive off the product head first. If jumping off the product, inspect below for people before jumping. Always enter the water feet first.
- Not recommended for children under the age of six. Use the Nautilus only under mature, knowledgeable adult supervision.
- The surface of the Nautilus will get wet and slippery. Always exercise caution and common sense while using the Nautilus. Reckless behavior may result in serious injury.
- Do not attempt or allow flips, somersaults or other acrobatic maneuvers. Landing on the head or neck can cause serious injury, paralysis or death.
- When not in use, secure the product against unauthorized or unsupervised use.
- Never exceed 10 adults or 15 children (max. 1,989lbs / 898kgs) on the product.
- Never allow more than one person at a time on each slide.
- Use only as intended by manufacturer.

## **Liability**

While every attempt is made to embody the highest degree of protection in all equipment, we cannot guarantee freedom from injury. The user assumes all risk of injury due to use. All merchandise is sold on this condition, which no representative of the company can waive or change.

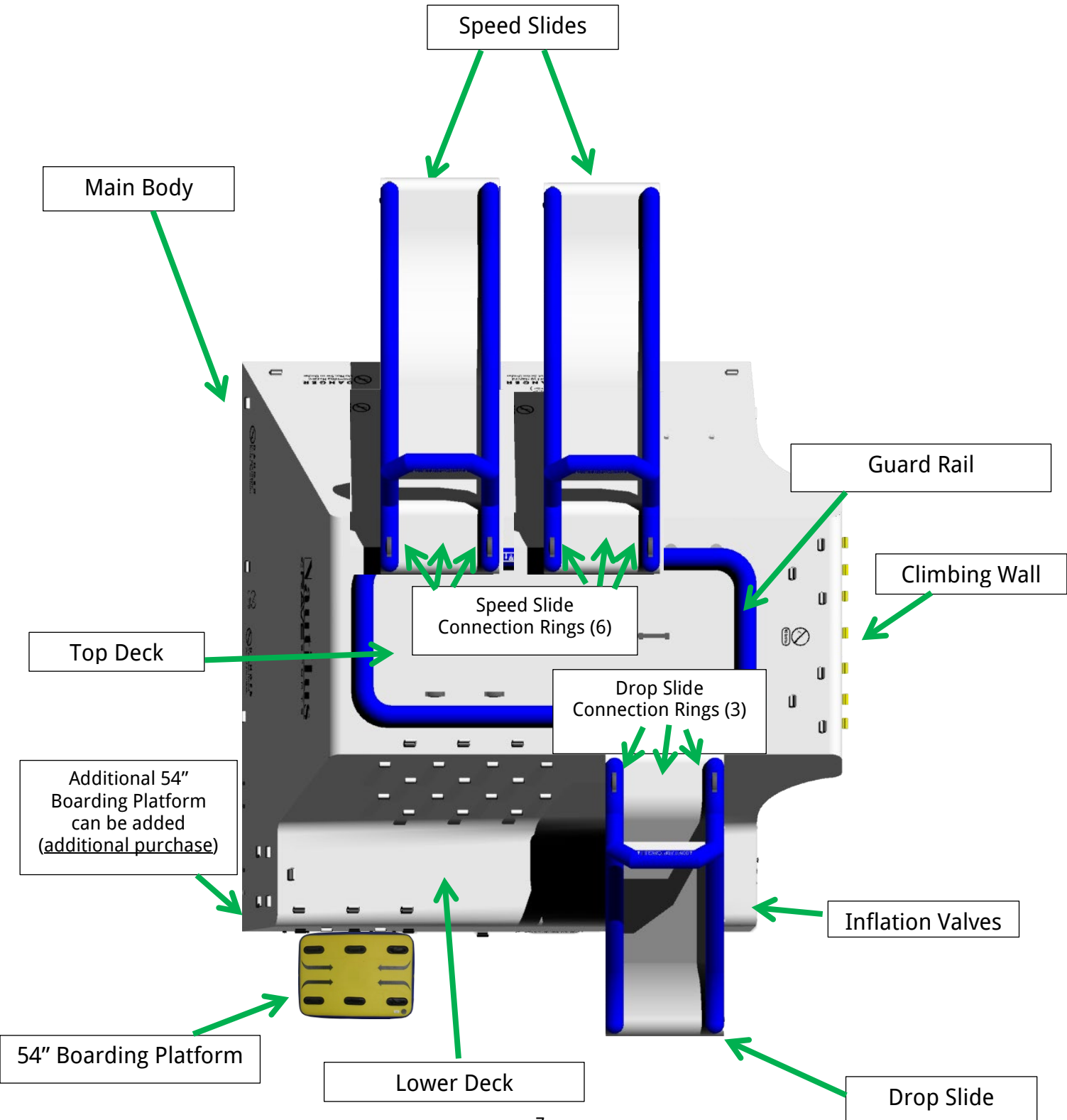
# Nautilus

Product	Minimum Water Depth	Maximum Capacity	Maximum Weight Capacity	Working Pressure
Nautilus	10 ft (3.0m)	10 Adults 15 Children	1980 lb (898kg)	Main Volume 0.5psi (0.03bar) Speed Slide 1.5psi (0.10bar) Drop Slide 1.5psi (0.10bar) Boarding 1.5psi (0.10bar)

## WARNING



# Overview of Nautilus





# Assembly of the Nautilus

**SET UP:** *CAUTION: Read completely before starting!*

## Step 1 - Prepare site, unpack, & orient product



Prepare a relatively flat location near the water's edge by removing rocks, sticks or other sharp objects that could puncture or damage the product.

Unpack all product pieces which include:

- Main Body
- Drop Slide
- Speed Slides (2)
- Boarding Platform

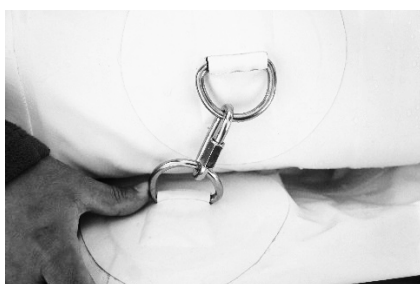
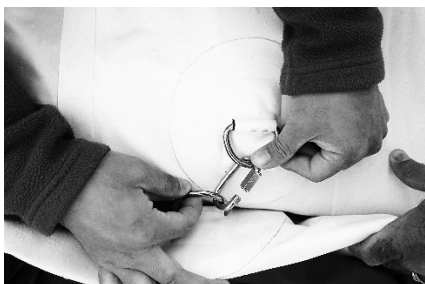
Lay out the Main Body on a flat location free of debris near the water's edge. Locate the Speed Slide and Drop Slide connection rings on the top of the Main Body. A total of six connection rings and a printed warning are located on the Speed Slides side on the top of the Nautilus. Rotate the Nautilus so that Speed Slide connection rings are oriented toward the body of water and away from shore. (Refer to Overview diagram on Page 7.) This position will make it easier to launch after inflation.

Identify the top of the slides and lay them out in the correct position on top of the main body. Once laid out, locate the three rings on the underside of the top end of each of the three slides. NOTE: Top of slides have a blue arch with printing.



## Step 2 – Connect rings on top of slides and begin inflation

Use quick links to connect the top of Speed Slides and Drop Slide to Main Body (3 rings each) (see photos below).



*CAUTION: Do not connect lower portion of slides and do not inflate the slides at this point. Inflate these after the Main Body has been inflated.*

- 2.1 Set up to inflate the Main Body by locating the grey round inflation valves on the corner nearest the Drop Slide (near the main warning labels) and connect to an inflator.



To open valve, depress the stem and rotate  $\frac{1}{4}$  turn clockwise. To close valve, depress the stem and rotate  $\frac{1}{4}$  turn counter-clockwise. The valve stem should be in the depressed position while inflating. Replace cap on valve after inflation to ensure air tight seal.

NOTE: RAVE Sports recommends using TWO (2) RAVE High Speed Inflator/Deflators for rapid inflation. (Item #01083 or #01090 (Europe)).

If using the RAVE Sports High Speed Inflator, simply lock the adaptor onto the end of the inflation hose and insert into the valve body. Turn  $\frac{1}{4}$  turn to lock in place.





This inflation adaptor will automatically open the valve when inserted and will close the valve when removed. The valve will not need to be manually opened /closed when using this special adaptor.



NOTE: If needing to inflate the Nautilus while it is in the water, use RAVE's 20ft Extended Hose Kit (#20900). This extra-long hose will allow an electric inflator to stay safely on shore or in a boat with the hose reaching over the water to the inflation valves on the product.

## **WARNING**

### **DO NOT OVERINFLATE**

Do not use compressed air for inflating this product as it can lead to excessive pressure which can cause the product to rupture with potentially damaging force to eyes, ears, skin and limbs.

Use of an air compressor or over-inflation can rupture the tube beyond repair, thus voiding the warranty.

- 2.2 Begin inflating the Main Body until the inflation valve for the guard rail (blue rectangular tube located on top of Main Body) is fully exposed. Once exposed, stop inflating the main body and fully inflate the guard rail to very firm (approximately 1.5 psi) (see photos below).



- 2.3 Continue inflating the Main Body. As the top deck becomes accessible, connect the VELCRO® Brand hook and loop connections on the slip sheets on the slides to the hook and loop partner connections on the guard rail.



NOTE: Slip sheets can be adjusted later but it will be more difficult to adjust when everything is fully inflated.

- 2.4 Once slip sheets are secured, continue inflating the Main Body.

NOTE: To inflate efficiently, it is helpful to monitor inflation progress and unroll and tug at the corners as inflation progresses. This will help the Nautilus rise evenly.

*CAUTION: Avoid getting water inside the Main Body by ensuring that the inflation valves are not under the water line. If water gets into the Main Body, it will be very difficult to remove the water. In addition, water could damage your inflator / deflator if it is sucked out during deflation.*

**2.5** Inflate the Main Body until it is standing upright, but is still soft enough to allow access to the Drop Slide straps. Loosely connect the lower straps on the Drop Slide first.

- Hook the strap to the ring attached to the Nautilus.



- Loop the strap through the ring attached to the bottom of the slide.



- Pull the strap through the slide ring and through the buckle. Leave the ends loose for now.



**2.6** Go around to the other side of the Nautilus and loosely connect the bottom straps on the Speed Slides in the same manner.

## 2.7 Finish inflating the Main Body to 0.5 psi.

NOTE: To ensure the proper pressure, we recommend using a RAVE 0-15 PSI Digital Pressure Gauge (#02809) to measure the exact psi.



NOTE: The Nautilus has an overflow valve near the inflation valves to prevent over-inflation and regulate normal changes in pressure due to temperature changes. Air will flow out of this valve if pressure becomes too great.



## 2.8 Attach the safety curtain under the Drop Slide using the ball bungees provided.



## Step 3 – Inflate Slides

After the Main Body is inflated, begin to inflate the slides by locating the inflation valves on the the bottom of the slides.



**3.1** Inflate the main chamber of the slides, secure the slip sheets, and then inflate the blue safety rails on all three slides.



Use long extension hose if necessary to inflate speed slides.





- 3.2 When all slides are firmly inflated to 1.5 psi, double check the rings on top and then tighten the Kwik Lok® straps on the bottoms of all slides. Check for back and fourth movement on the slides to ensure they are secured.



- 3.3 Inspect all Slip Sheets are secure and in the correct position.



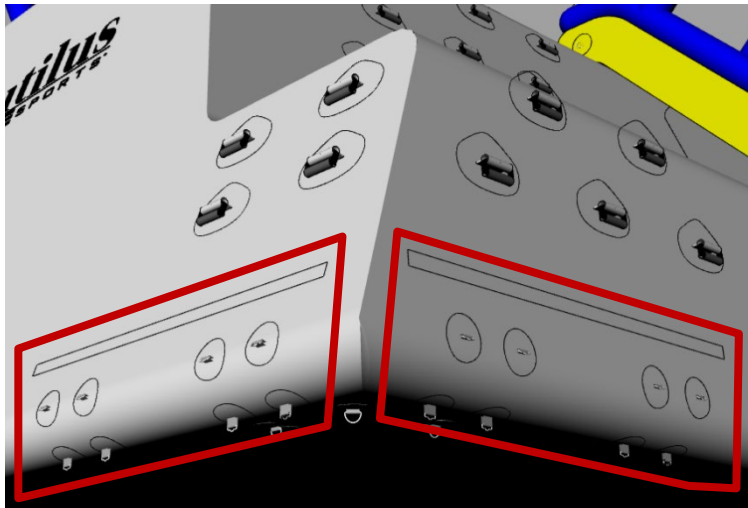
## **WARNING**

The gap between the guard rail and slides need to be covered with the Slip Sheet. If not, it could become a tripping and entrapment hazard. Slip Sheet must wrap around top of safety rail and connect to Velcro strip on underside of guard rail tube.

## Step 4 – Move the Nautilus into shallow water and attach the 54" Boarding Platform

NOTE: Do not drag the Nautilus! Avoid puncturing the bottom. Use minimum of 8 people to lift and carry the Nautilus to shallow water.

The 54" boarding platform can be installed at either side of the corner next to the lower deck. An optional second boarding platform can also be installed on the other side of the corner.



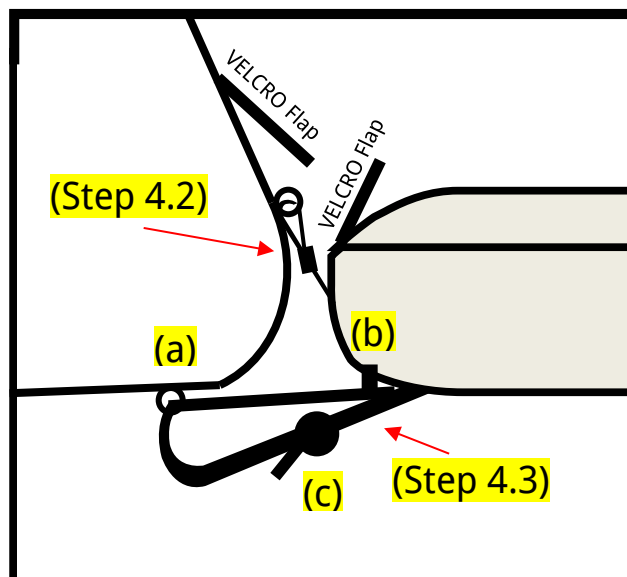
- 4.1 Inflate the boarding platform, place in position next to the Nautilus and flip protective flap up to rest on top of the platform, and open the hook and loop straps on the boarding platform.



- 4.2** Feed the end of the short VELCRO strap through the upper ring (ring just below the hook and loop flap) on the Nautilus. Fold strap back down onto itself and fold side wings on top to secure it in place. Repeat with the second strap.



- 4.3** a) Feed longer strap attached to the bottom of the boarding platform through the bottom ring attached to the Nautilus directly across from it.
- b) Then feed the strap through the buckle on the boarding platform and cinch it securely.
- c) Tie any extra strap length into a single knot to prevent slipping in the buckle.



4.4 Repeat for second strap, then tighten both straps to draw the boarding platform tightly against the Nautilus.

4.4 Secure the boarding platform extender.

To prevent people from getting trapped between the Nautilus and the boarding platform, install the boarding platform extender.



a. Undo the VELCRO Brand hook and loop closures on the extender.



b. Sandwich the extender flaps over the hook and loop of the boarding platform.

c. Undo the VELCRO Brand straps on the Main Body, place the hook and loop end of the extender flap into the partner flap of the Main Body.

*CAUTION: This safety apron MUST be installed and used at all times to prevent users from getting trapped between the Nautilus and boarding platform elements.*



# Anchoring the Nautilus

## Overview

Due to extreme varieties of conditions, anchor line and anchors are not included with the Nautilus and must be purchased separately.

Attach the anchor line (not included) securely to the Anchor Rings on the bottom of the product. A set of loops is attached to an Anchor Ring on each corner of the Nautilus for a total of four anchor rings.



NOTE: There are many ways to anchor the Nautilus. Before anchoring, it is best to consult local regulations regarding what types of anchors can be used in your area. Every location has different conditions and demands, so each owner will have to determine what will work best for their situation. Here are a few anchoring tips to get started:

- Nylon rope holds up the best in water and sun. Lines do eventually wear out, so it's important to check them periodically.
- Choose a location that is protected from the wind, of sufficient water depth, and free of obstructions a safe distance in all directions.
- A minimum of 150-200 lbs. of anchor weight per anchor point is recommended for most applications; however, anchoring the Nautilus on large bodies of water may require more anchor weight.
- Bell anchors are not typically recommended since they are easily dragged, especially on flat, sandy bottoms. Screw-type or more permanent toggle-type anchors may be necessary in more extreme conditions.

- Attaching a heavy duty shock cord to the anchor line is recommended to help absorb vertical movements of the product due to waves and normal use. An Anchor Connecting System (part # 01024) is available through RAVE Sports and includes this heavy duty shock cord.
- Adjust length of anchor line so that it is approximately 1-2 ft. longer than the depth of the water. The RAVE Sports anchor connector shock cord will provide 2-3 ft. of stretch to absorb waves and any vertical motion.

NOTE: More slack in the anchor line may improve anchor holding performance, but too much slack may allow the product to flip over in strong winds. For best results, maximize anchor holding power via more weight or a different type of anchor and minimize anchor line length.

- Mark the anchor line by attaching a buoy or other float to the end of the anchor line when not in use to allow the anchor line to be more easily found.
- Anchoring a stainless steel snap hook to the anchor line simplifies the process of removing the product from the water for cleaning or repair and to return it to its previous location.

### *Other options used for anchoring*



Septic Tank Cover



Cinder Blocks



Land  
Screw



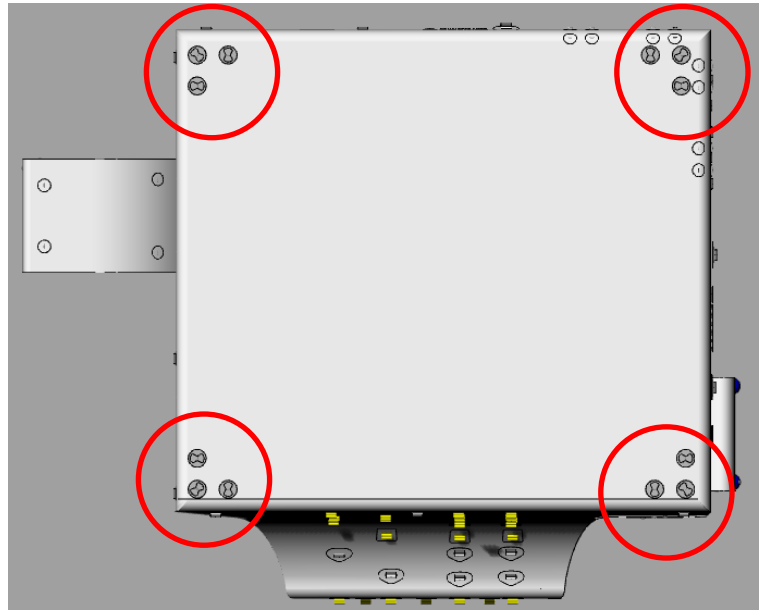
Anchor  
Connector Kit  
Item#: 01024



# Anchoring plates beneath the Nautilus

The Nautilus has four anchor points on the bottom of the main body constructed of three D-rings for each corner.

The D-rings are connected with a durable nylon rope with a ring at the mid-point for connecting the anchor line.

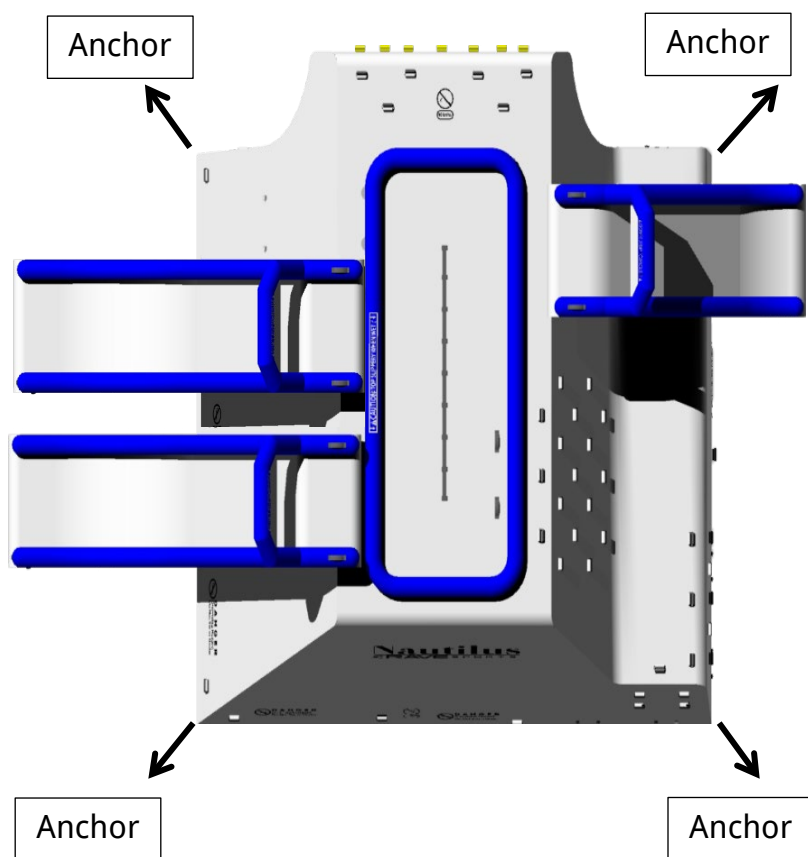


## STEP 5 - Anchoring the Nautilus

5.1 Install one anchor with an anchor line in approximate location where one corner of the Nautilus is to be positioned on the water.

NOTE: Pay attention to wind conditions and wind direction. It is best to install the first anchor in the upwind location of the intended Nautilus location.

- 5.2 From a boat, slowly tow the Nautilus into position using a tow rope attached to one of the bottom handles or anchor rings.
- 5.3 When the Nautilus is in position, attach the anchor point on the Nautilus to the preset anchor line already in the water. This should be the upwind corner of the Nautilus, as it will make it easier to install the other three anchor positions if they are downwind.
- 5.4 From the boat, with tow lines hold the Nautilus in the desired position and orientation. Position the remaining three anchor points, dropping the anchors below and slightly outside the corners of the Nautilus and attaching the anchor lines to the Nautilus anchor line rings. Pull anchor lines snug until there is minor tension on the anchor shot cords.



- 5.5 After anchors are tied down, double check boarding platform, slide connections and all other attachments for complete attachment.

If all are secure, the Nautilus installation is complete.

## Use of the Nautilus



### WARNING

#### DROWNING HAZARD

**Never attempt to swim under the Nautilus.  
The Nautilus is a large object on the water with no place to  
come up for air if you are beneath it.**

***CAUTION!** The surface of the Nautilus can become wet and slippery. Refrain from horseplay or other activity that could cause collisions and falls, resulting in injury. Read the warnings on Nautilus and make sure that everyone who participates on the product know and are aware of all the dangers.*

When in use, position a life guard person at the top deck of the Nautilus to supervise activity and ensure safe use of the product. A lifeguard at this location should have good visual sight to all areas on / around the Nautilus.

Never exceed 10 Adults / 15 Children (max. 1,980lbs/989kgs) on the Nautilus at one time.

Never allow more than one person on a slide at a time. Before starting down the slide, ensure the water is clear of other people or obstructions.

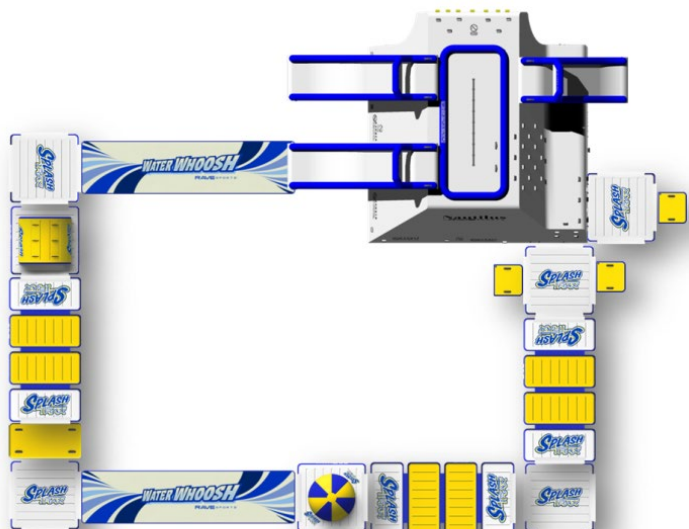
Always jump feet first; never dive or enter the water head first.

## Additional Options for Attachments

Additional RAVE Sports products may be attached directly to the corner of the Nautilus in place of a boarding platform. In addition, the Nautilus can be installed as a signature piece within a Splash Trax obstacle course configuration. These packages are designed to be flexible to fit a wide variety of waterfronts and budgets. Visit [www.ravesports.com/commercial](http://www.ravesports.com/commercial) for more information or call us at 800.659.0790. (Example: See photos below of a Universal Platform attached to the Nautilus with a Boarding Platform and a sample Splash Trax system attached to the Nautilus.)

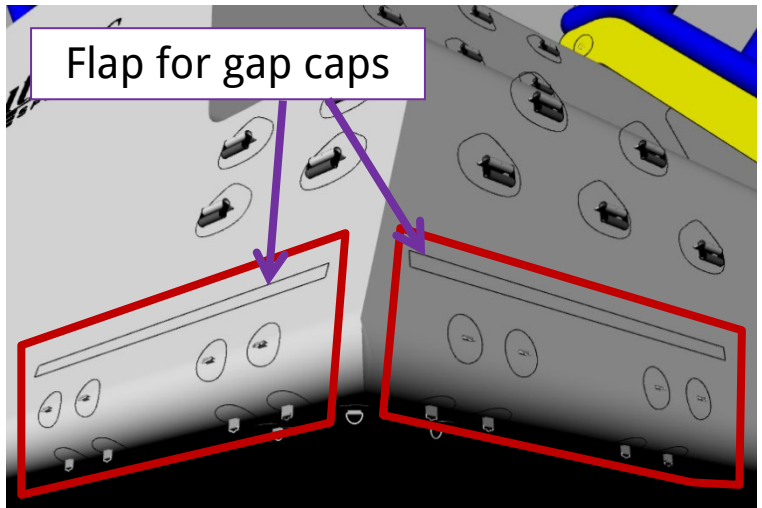


**Disclaimer:** The configuration below used is for example purposes. Contact RAVE Sports for more information on configuring your own water park.



## Universal Platform & Other Splash Trax Components

*CAUTION: To avoid risk of puncture or damage to the product, DO NOT DRAG the attachment from shore. Always carry it to the water, using at least two people on opposite sides of the product. Float in shallow water until all pieces are connected together, then move to the desired location for connecting to Nautilus.*

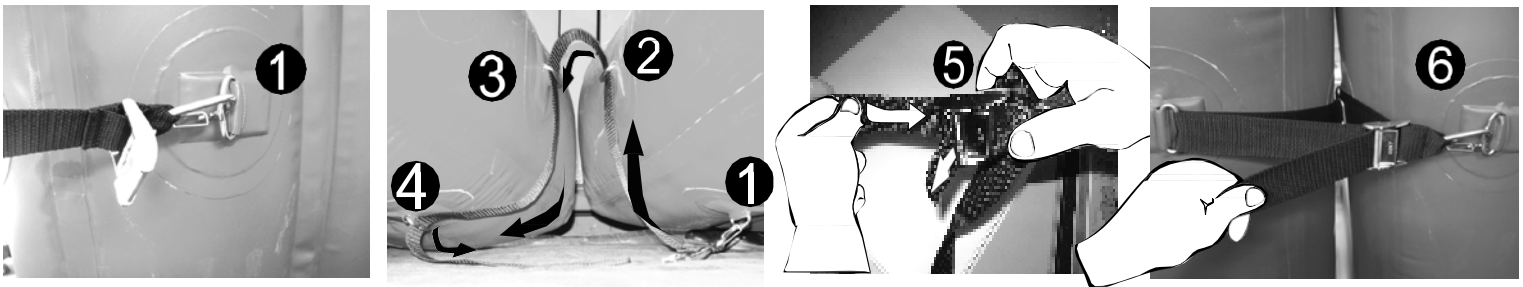


### Step 1

Locate the rings on the Drop Slide side of the Nautilus. Place the Universal Platform next to the Nautilus so that the oval rings on the side and the Velcro flaps are facing each other.

### Step 2

Connect the Universal Platform to Nautilus using two Kwik Lok straps provided.



1. Attach the snap hook of one Kwik Lok strap to the outer most rings on the bottom of the Universal Platform.
2. Feed free end of the strap up through the oval ring on the side of the Universal Platform.
3. Then feed strap down through the top ring on the Nautilus.
4. Continue feeding strap through the bottom ring of the Nautilus and back through the metal buckle.
5. Leave loose for now. Repeat for the second strap.
6. Tighten straps so that the pieces are tight against each other.



NOTE: Ensure there is no slack anywhere in the strapping. Pull tight to ensure straps are tight and secure.

### Step 3

Attach protective Gap Cap cover to the Velcro flaps on both modules.



Final installation should look like photo below:



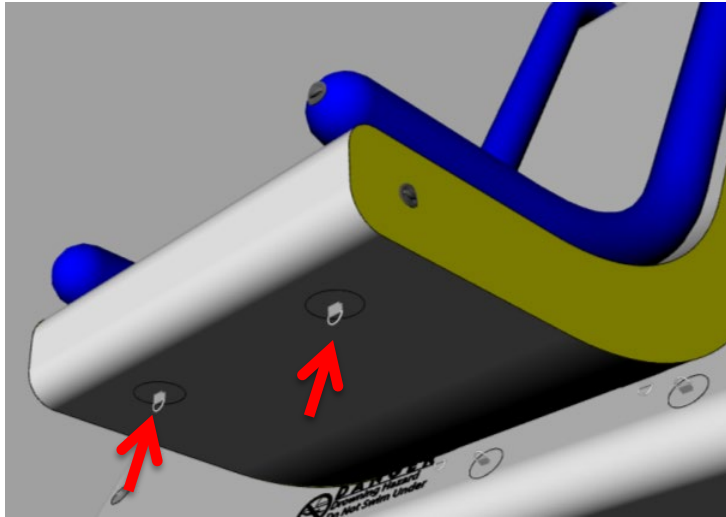
### Attaching Water Whoosh to Speed Slide

Instead of users sliding directly into the water, a Water Whoosh can be connected to the end of the slide. With this configuration, users will slide across the floating mat before entering the water.



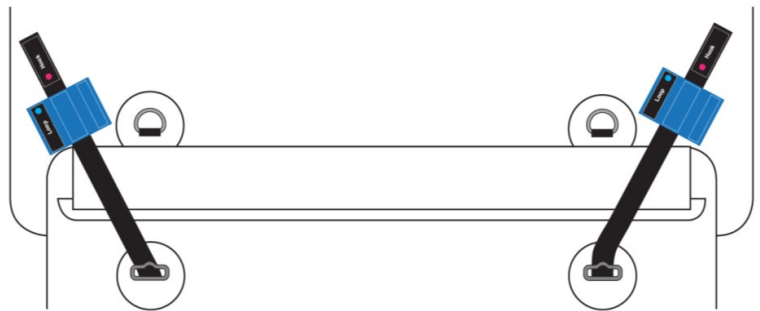


Locate two rings underneath the Speed Slide. These rings will connect to the straps that are located underneath the Water Whoosh 20 (Grey #02464, White #02829) and Whoosh 15 (Grey #02603, #02828 White).



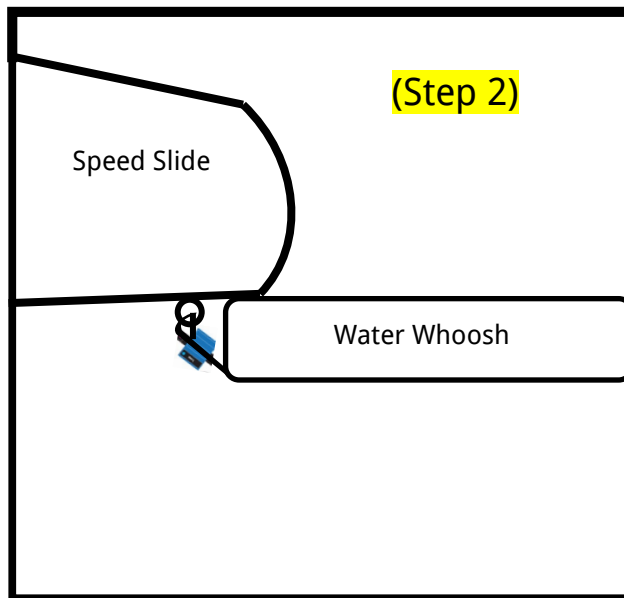
## Step 1

Set the Speed Slide on top of the Water Whoosh and align the straps connected to the Water Whoosh.



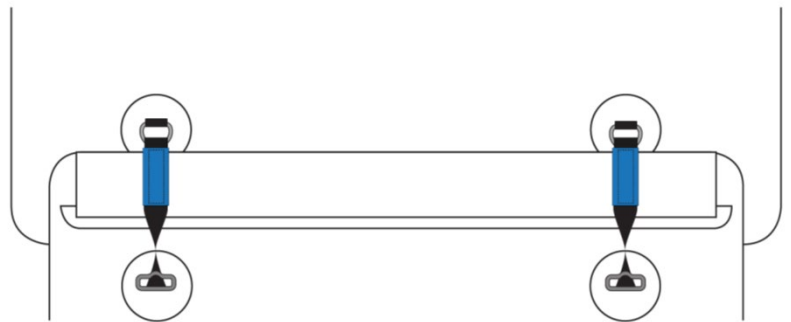
## Step 2

Unwrap the straps and twist the strap over once, so the flaps are open towards the bottom. Feed the strap through the metal D-ring on the bottom of the Speed Slide, then back over to connect the VELCRO Brand pieces together, then fold the sides over each other to secure tightly.



### Step 3

Double check to make sure the connection is secure. There will still be movement, but the Water Whoosh should not move side to side excessively.



Once the straps are secure, the Water Whoosh is installed and ready for sliding.



## **Cleaning, Maintenance, Deflation and Storage**

- Clean the Nautilus with mild soap and clean water or with Speed Clean Heavy Duty Inflatable Cleaner (available separately #01078).

NOTE: Never use petroleum-based products or solvents for cleaning, and never use a power washer to clean the Nautilus as the high pressure water jet will damage the vinyl beyond repair.

NOTE: Rodents including muskrats may be attracted to the PVC vinyl of your product. Maintaining full air pressure (0.5 psi) will discourage them from chewing the vinyl. Make the whole area unattractive to rodents by removing food sources from the shoreline. Check with your local wildlife experts for additional guidance or possible restrictions.

- To deflate the Nautilus, detach the product and all attachments from the four anchor lines and tow to shallow water near a flat area on shore free from rocks or other sharp objects. Begin to deflate the Main Body by unlocking the inflation valve and connecting to a rapid deflation pump. As the Main Body is deflating and easier to maneuver on land, do not drag, but lift and carry the Nautilus to a flat, dry place on land, preferably covered with a large clean tarp to prevent sand from attaching to the product. Continue to deflate the Main Body, the slides, and the guard rail as well as any attachments.

NOTE: RAVE Sports recommend using TWO (2) RAVE High Speed Inflator/Deflators for rapid deflation. (Item #01083 or #01090 (Europe)).

- Once completely deflated, fold the Nautilus and roll it up like a sleeping bag. Product should be completely dry and remain dry while stored.
- Store in a cool, dry place away from harmful UV rays from sunlight. Do not store product directly on concrete surface. Place mothballs around stored inflatable to deter rodents and insects.

## Repairs

For large holes, tears or seam failures, contact RAVE Sports at 1-800-659-0790.

Additional repair patches can be purchased online at [www.ravesports.com](http://www.ravesports.com).

### For minor holes and tears:

- Inflate the product and locate the leak by spraying the area with mild soapy water.
- Determine the hole size and cut a patch 1-2 inches wider than the diameter of the hole. Make sure all corners of the patch are rounded.
- Deflate the product and clean the patch and area around the hole with rubbing alcohol. Let dry completely.

NOTE: Read and understand the warnings on the glue container for optimal success with your repair.

- Apply glue to the patch and the area around the hole. Let the glue dry until it is tacky to the touch, about 30 seconds.
- Lay the product on a flat, hard surface and apply the patch. Working from the center to the outer edge, rub out any air bubbles between the patch and the product.
- Let patch dry for 24 hours before attempting to inflate the product.

RAVE  
S P O R T S®

RAVE  
S P O R T S®

THIS PAGE INTENTIONALLY LEFT BLANK.

RAVE  
S P O R T S®

RAVE  
S P O R T S®



[www.ravesports.com](http://www.ravesports.com)

## RAVE Sports

A Revel Match, LLC Company

985 Aldrin Drive #301  
Eagan, Minnesota 55121

December 2017