



Free Knitting Pattern
LION BRAND® BASIC STITCH ANTI-PILLING™
VIBRANT LEOPARD DOG SWEATER

Pattern Number: M21105 BSAP



SKILL LEVEL – EASY

SIZES

S (M, L)

Finished Chest 19 1/2 (23, 27) in. (49.5 (58.5, 68.5) cm)

Finished Length 14 (18, 21) in. (35.5 (45.5, 53.5) cm), including bands

Note: Pattern is written for smallest size with changes for larger sizes in parentheses. When only one number is given, it applies to all sizes. To follow pattern more easily, circle all numbers pertaining to your size before beginning

MATERIALS

- LION BRAND® BASIC STITCH ANTI-PILLING™ (Art. #202)
 - #105 Frost 1 (2, 3) ball(s) (A)
 - #138 Pomegranate 1 (2, 2) ball(s) (B)
 - #195 Hot Pink 1 (2, 2) ball(s) (C)
- LION BRAND® double pointed needles size 8 (5 mm), set of 5
- LION BRAND® stitch markers
- LION BRAND® large-eyed blunt needle



ADDITIONAL MATERIALS

Circular knitting needle size 8 (5 mm), 29 in. (73.5 cm) long

GAUGE

16 sts + 24 rows = about 4 in. (10 cm) in St st (k on RS, p on WS).

BE SURE TO CHECK YOUR GAUGE

PATTERN STITCHES

K2, p2 Rib (worked over a multiple of 4 sts + 2 additional sts)

Row 1 (RS): K2, *p2, k2; rep from * to end of row.

Row 2: K the knit sts and p the purl sts.

Rep Row 2 for K2, p2 Rib.

NOTES

1. Sweater is made in 2 pieces: Back and Under Piece.
2. Pieces are worked separately from lower edge up to neck edge then sewn together, leaving openings for legs.
3. Back and Under Piece are worked back and forth in rows. These pieces can be worked back and forth on circular needle or on straight needles, whichever you prefer.

For thousands of free patterns, visit our website www.LionBrand.com

To order visit our website www.lionbrand.com or call: (800) 258-YARN (9276) any time!

Copyright ©1998-2021 Lion Brand Yarn Company, all rights reserved. No pattern or other material may be reproduced -- mechanically, electronically, or by any other means, including photocopying - without written permission of Lion Brand Yarn Company.

4. Back is worked in Fair Isle colorwork following Chart. Read RS rows of Chart from right to left and WS rows from left to right. Carry colors not in use across WS of work. If carrying color across 5 or more sts, twist yarns on WS to prevent overly long strands (floats) on the WS.
5. Under Piece is worked in K2, p2 Rib, changing yarn color following Stripe Sequence.
6. Sts are picked up around neck and leg openings and lower edge, then worked in rnds of K2, p2 Rib with a single yarn color.
7. When you see 'work in pattern as established' in the instructions, this means to work the next row of the pattern, lining up sts as in previous rows.
8. When you see work 'even' in the instructions, this means to continue on in the pattern st you have established without changing the st count by increasing, decreasing, or binding off.

STRIPE SEQUENCE

Work * 2 rows with A, 2 rows with B; rep from * for Stripe Sequence.

BACK

With A, cast on 49 (58, 67) sts.

Beg with Row 1 (RS) of Chart, work in St st (k on RS, p on WS) and change yarn color following Chart, beg and ending rows where indicated for the size you are making, until piece measures about 8 (11 1/2, 14) in. (20.5 (29, 35.5) cm) from beg, end with a WS row as the last row you work.

Shape Neck

Continue to change yarn color following Chart as established until piece is complete.

Decrease Row (RS): K1, k2tog, k to last 3 sts, k2tog, k1 – you will have 47 (56, 65) sts in this row.

Work in St st for 5 (5, 3) rows.

Rep Decrease Row – 45 (54, 63) sts.

Rep last 6 (6, 4) rows 2 (3, 4) more times – 41 (48, 55) sts when all decreases have been completed.

Work even in St st until piece measures about 13 (17, 20) in. (33 (43, 51) cm) from beg.

Bind off.

UNDERPIECE

With A, cast on 38 (46, 54) sts.

Beg with a RS row, work in K2, p2 Rib for 2 rows.

Change to B and work in K2, p2 Rib for 2 rows.

Continue in K2, p2 Rib, changing yarn color every 2 rows following Stripe Sequence, until piece measures about 4 1/2 (6 1/2, 8 1/2) in. (11.5 (16.5, 21.5) cm) from beg, end with a WS row as the last row you work.

Shape Neck

Note: Continue to change yarn color following Stripe Sequence until piece is complete.

Next 2 Rows: Bind off 4 sts, work in K2, p2 Rib pattern as established to end of row – 30 (38, 46) sts.

Decrease Row (RS): K2tog, work in K2, p2 Rib pattern as established to last 2 sts, p2tog – 28 (36, 44) sts.

Next Row: Work even in K2, p2 Rib pattern as established.

Rep Decrease Row – 26 (34, 42) sts.

Rep last 2 rows 1 (2, 3) more time(s) – 24 (30, 36) sts.

Work even in K2, p2 Rib pattern as established for 3 rows.

Rep Decrease Row – 22 (28, 34) sts.

Rep last 4 rows 1 (2, 3) more time(s) – 20 (24, 28) sts.

Work even in pattern as established until piece measures about 8 (11, 14) in. (20.5 (28, 35.5) cm) from beg.

Bind off.

FINISHING

Note: Placement of leg openings depends on breed and the particular dog. Hold Back and Under Piece against your dog and place markers on side edges where you would like leg openings to beg and end.

Beg at neck edge, sew sides of Under Piece to Back leaving area between markers unsewn for leg openings. Note that the lower portion of the Back remains unsewn.

Neckband

From RS with double pointed needles and C, pick up and k60 (68, 80) sts as evenly spaced as possible around neck edge. Divide sts onto 4 needles, placing 14 (16, 20) sts on first 2 needles and 16 (18, 20) sts on last 2 needles. Place marker for beg of rnd. Join by working the first st on left hand needle with the working yarn from the right hand needle.

Rnds 1-5: * K2, p2; rep from * around.

Bind off.

Leg Bands

From RS with double pointed needles and C, pick up and knit sts as evenly spaced as possible around one leg opening, taking care to pick up a multiple of 4 sts. Divide sts onto 4 needles. Place marker for beg of rnd. Join by working the first st on left hand needle with the working yarn from the right hand needle.

Rnds 1-5: * K2, p2; rep from * around.

Bind off.

Rep for second leg opening, taking care to pick up the same number of sts as you picked up for first leg opening.

Lower Band

From RS with circular needle and C, pick up and knit sts as evenly spaced as possible all the way around lower edge, taking care to pick up a multiple of 4 sts. Divide sts onto 4 needles. Place marker for beg of rnd. Join by working the first st on left hand needle with the working yarn from the right hand needle.

Rnds 1-5: * K2, p2; rep from * around.

Bind off in rib.

Weave in ends.

ABBREVIATIONS

beg = begin(ning)(s)

k = knit

k2tog = knit 2 stitches together

p = purl

p2tog = purl 2 stitches together

rep = repeat(s)(ing)

rnd(s) = round(s)

RS = right side

st(s) = stitch(es)

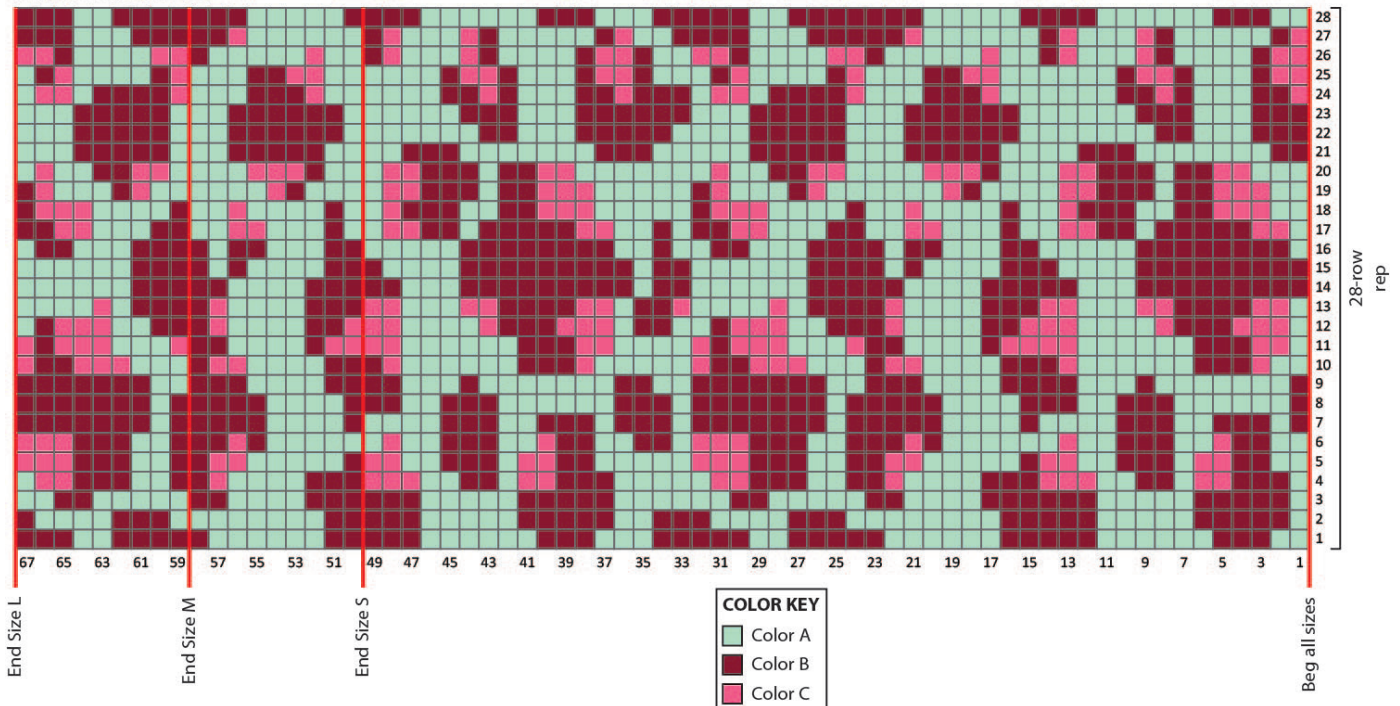
St st = Stockinette stitch

WS = wrong side

Every effort has been made to produce accurate and complete instructions. We cannot be responsible for variance of individual knitters or crocheters, human error, or typographical mistakes.

©2021 Lion Brand Yarn Company, all rights reserved.

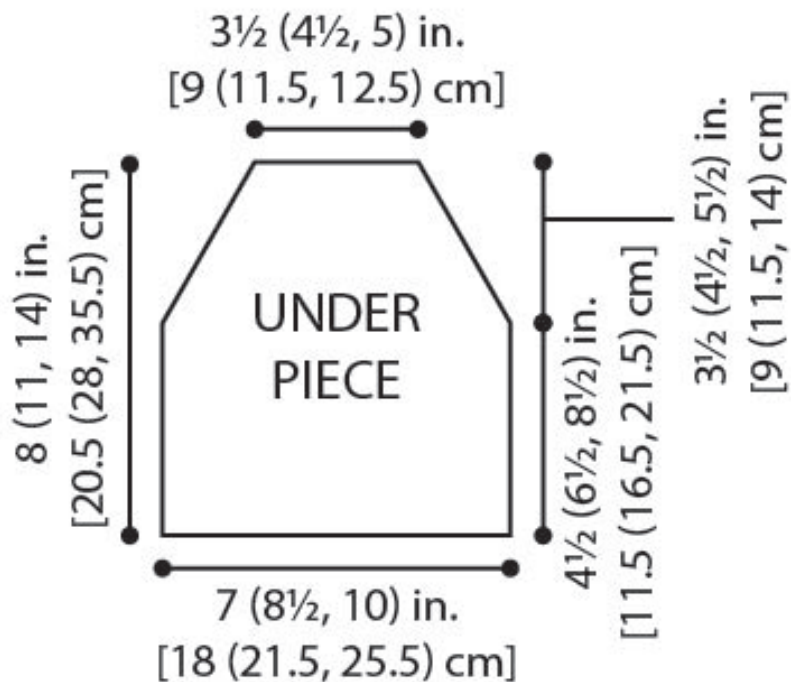
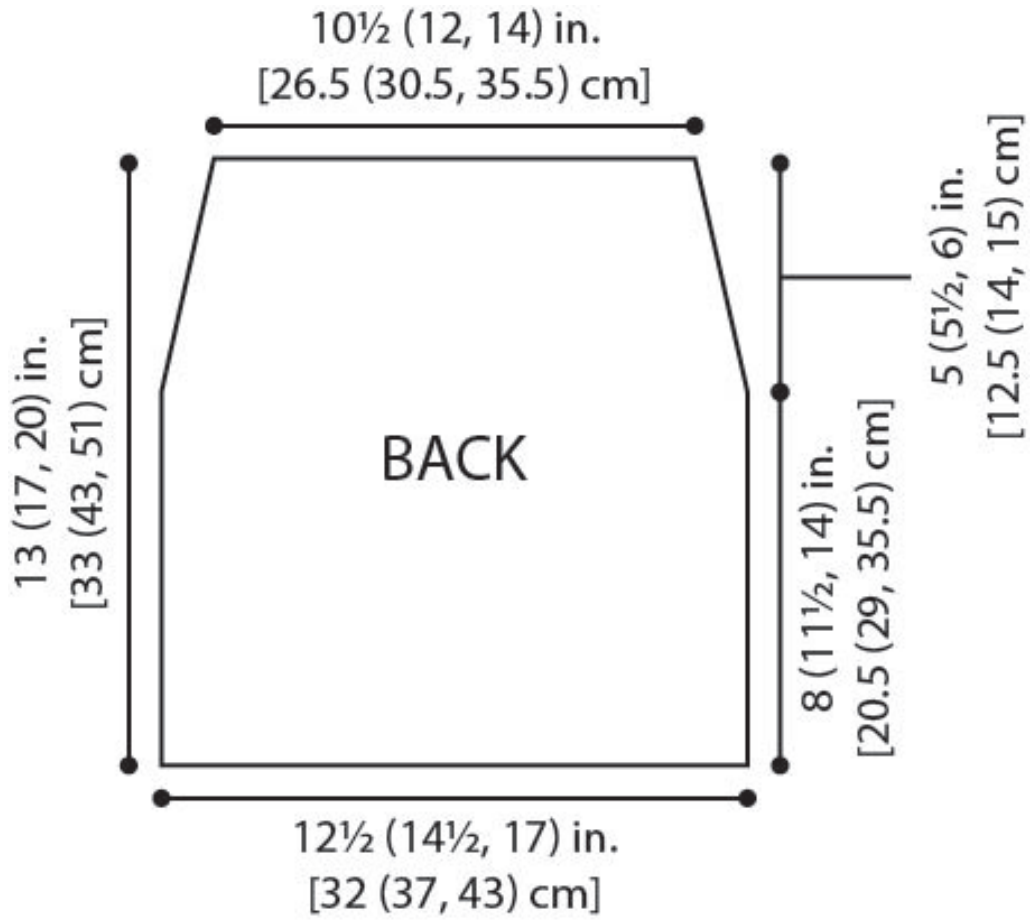
Fair Isle Chart for Back



For thousands of free patterns, visit our website www.LionBrand.com

To order visit our website www.lionbrand.com or call: (800) 258-YARN (9276) any time!

Copyright ©1998-2021 Lion Brand Yarn Company, all rights reserved. No pattern or other material may be reproduced -- mechanically, electronically, or by any other means, including photocopying - without written permission of Lion Brand Yarn Company.



For thousands of free patterns, visit our website www.LionBrand.com

To order visit our website www.lionbrand.com or call: (800) 258-YARN (9276) any time!

Copyright ©1998-2021 Lion Brand Yarn Company, all rights reserved. No pattern or other material may be reproduced -- mechanically, electronically, or by any other means, including photocopying - without written permission of Lion Brand Yarn Company.