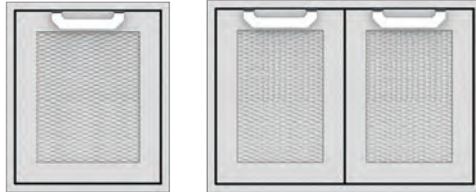




### ACCESS DOORS

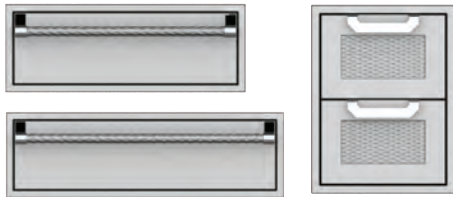
*Single and Double Access Doors*



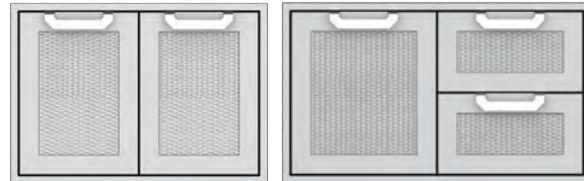
- Available in 18", 24", 30", 36", and 42" widths
- Heavy gauge welded body construction
- Recessed Marquise™ accented panels with commercial grade handles
- Soft close door hinges with alignment adjustability

### STORAGE

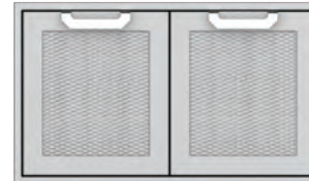
*Drawers 30", 36" and 16" Double*



*Storage Cabinets 30", 36, or 42"  
Double Door or Door Drawer Combo*



*Magnetic Sealed Pantry Storage  
36" only*



- Heavy gauge welded body construction
- Motion activated illumination
- Recessed Marquise™ accented panels with commercial grade handles
- Soft close door hinges with alignment adjustability

### RECYCLE, CLEAN-UP & TRASH

*Trash and Recycle Center Storage Drawer*



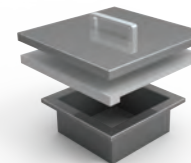
- Available in 20" width
- Heavy gauge welded body construction
- Slide out trash and recycle bins that are easily removable for emptying and cleaning
- Full extension slides
- Recessed Marquise™ accented panel with commercial grade handles

*Paper Towel Dispenser*

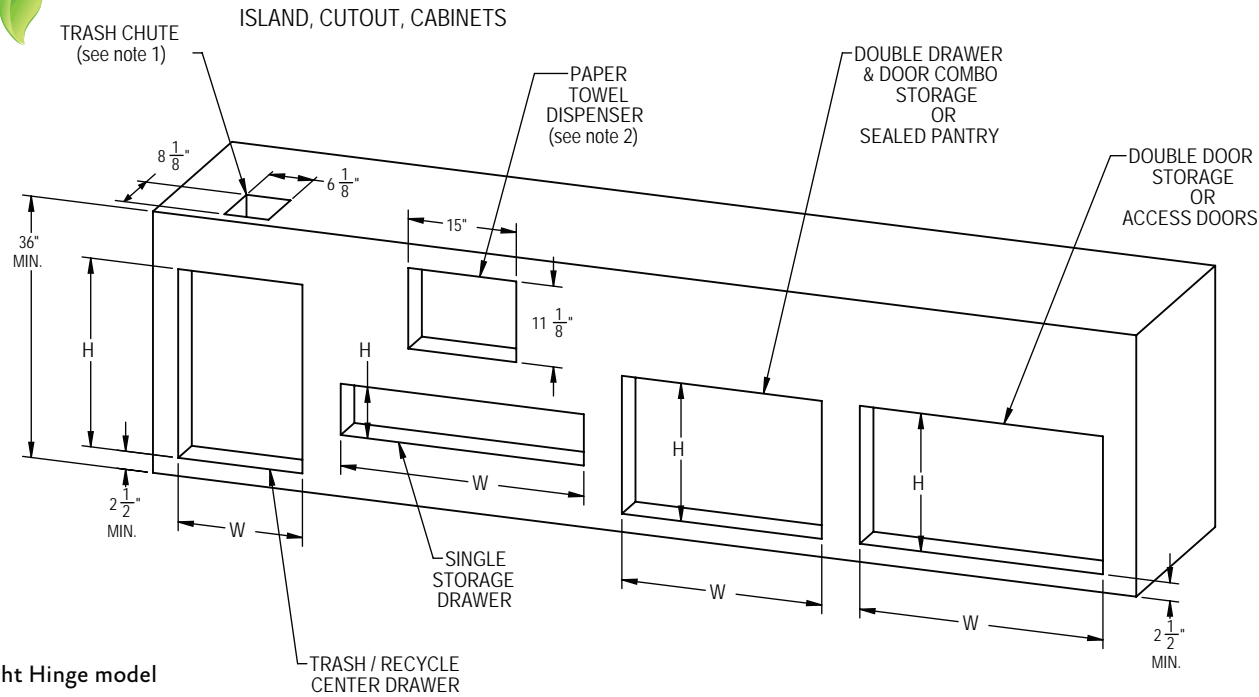


- Can be mounted horizontally or vertically (left or right hinged)
- Removable paper towel holder - fits standard paper towel roll)
- Heavy gauge welded body construction
- Recessed Marquise™ accented panel with commercial grade handles

*Countertop Trash Chute*



- Heavy gauge welded body construction
- Complimentary to Trash Center
- Easy disposal without pulling out the Trash Center door
- Stainless steel top cover with handle
- Commercial grade cutting board that slides for easy access to chute



NOTES:  
 1) Trash Chute AGTC cutout depends on type of countertop used. Please refer to installation instructions for details.  
 2) Paper Towel Dispenser AGPTD16 can be installed in 3 different orientations using these cutout dimensions. Please refer to installation instructions for details.

\_\_ = specify (L) or (R) for Left or Right Hinge model  
 XX = width needed

Built - In Models	Description	Product Width Options		Cutout Dimensions		Approx SHP WT
		W (in.)	W (in.)	D (in.)	H (in.)	
AGAD__xx	Single Access Door , with Marquise accent panel	18" or 24"	15 7/8" or 21 7/8"	n/a	19	
AGADxx	Double Access Doors , with Marquise accent panel	30", 36" or 42"	27 7/8", 33 7/8" or 39 7/8"	n/a	19	
AGSDxx	Double Storage Doors , with Marquise accent panel	30", 36" or 42"	27 7/8", 33 7/8" or 39 7/8"	23 3/8	19	
AGSR__	Single Storage Drawer , all stainless front with Marquise <b>accent handle</b>	30" or 36"	27 7/8" or 33 7/8"	23 3/8	8 7/8	
AGDR16	Double Drawers , with Marquise accent panel	16"	13 11/16	23 3/8	19	
AGSDR__	Double Drawer and Storage Door Combination w/ Marquise accent panel	30", 36" or 42"	27 7/8", 33 7/8" or 39 7/8"	23 3/8	19	
AGLP36	Double Sealed Pantry Storage Doors, with Marquise accent panel	36"	33 7/8	24 13/16	18 3/4	
AGTRC20	Trash and Recycle Center Storage Drawer, with Marquise accent panel	20"	17 1/4	24 1/2	25 3/4	
AGTC	Countertop Trash Chute with Cutting Board and Cover	-	6 1/8	8 1/8	n/a	
AGPTD16	Paper Towel Dispenser, with Marquise accent panel	16"	11 1/8	10 1/8	15	