



*Free Knitting Pattern*  
LION BRAND® 24/7 COTTON®  
**CATALINA PLACEMAT**

Pattern Number: M21055 TC



## SKILL LEVEL – EASY

## SIZES

About 11 x 18 1/2 in. (28 x 47 cm), after blocking

## MATERIALS

- LION BRAND® 24/7 COTTON® (Art. #761)  
#144 Magenta 1 ball
- LION BRAND® knitting needles size 7 (4.5 mm)
- LION BRAND® stitch markers
- LION BRAND® large-eyed blunt needle



## GAUGE

19 sts + 29 rows = about 4 in. (10 cm) in St st (k on RS, p on WS), unblocked

BE SURE TO CHECK YOUR GAUGE.

## NOTES

1. Placemat is worked back and forth in rows, following Chart.
2. First and last 4 sts are worked in 3 sts of Garter st (k every st) and 1 st of St st (k on RS, p on WS) for side borders.
3. Read RS rows of Chart from right to left and WS rows from left to right.
4. When you see 'as established' in the instructions, this means to continue in the current pattern st, lining up sts as in previous rows.

## PLACEMAT

Cast on 86 sts.

Knit 2 rows.

**Row 1 (RS):** K4 for border, \* place marker (pm), work Row 1 of Chart; rep from \* to last 4 sts, pm, k4 for border.

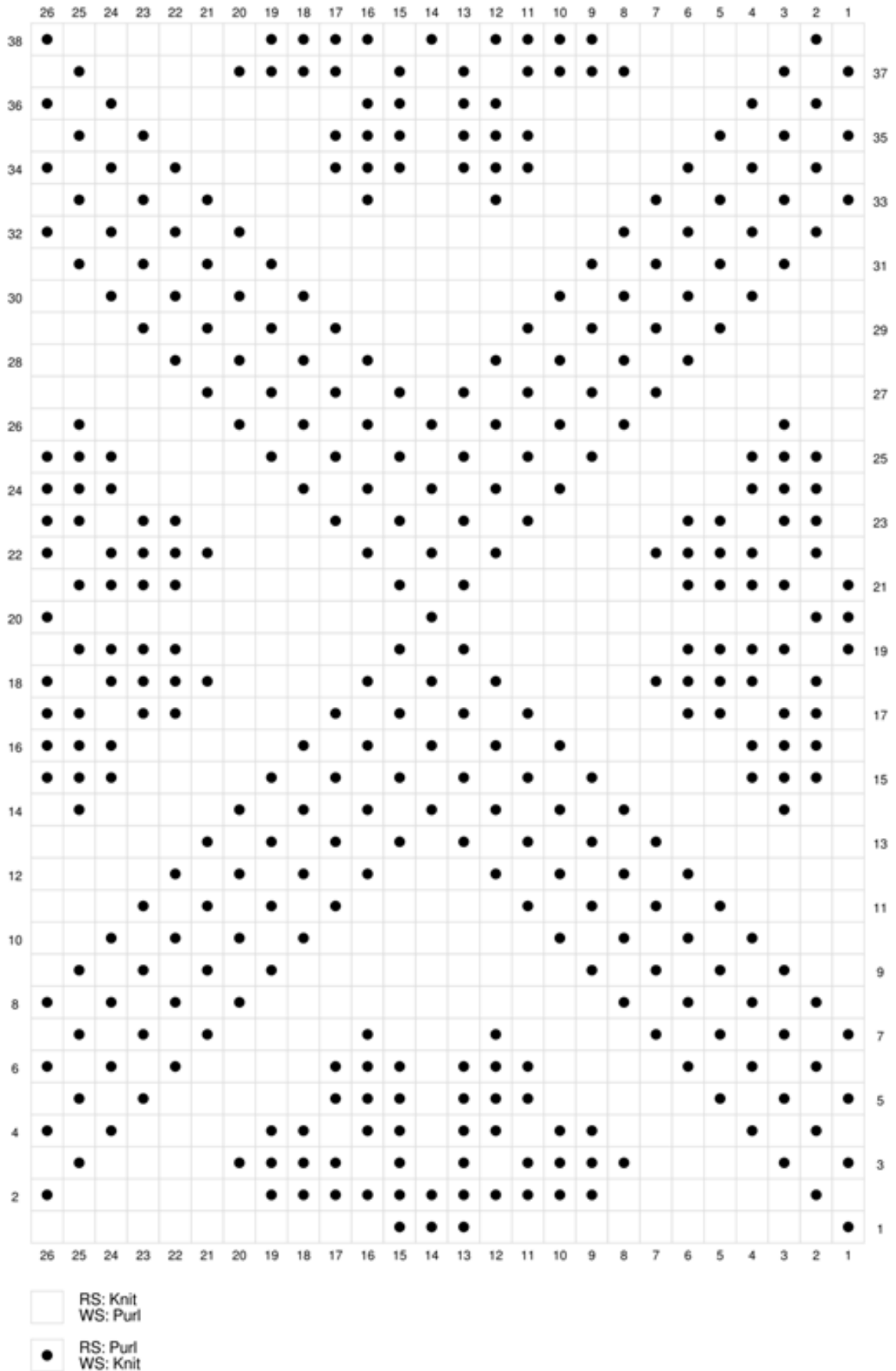
**Row 2 (WS):** K3, p1, \* sm, work next row of Chart; rep from \* to last marker, sm, p1, k3.

**Row 3 (RS):** K4, \* sm, work next row of Chart; rep from \* to last marker, sm, k4.

Rep Rows 2 and 3, keeping first and last 4 sts in border pattern as established and working 26-st repeat of Chart 3 times between markers, until all 38 rows of Chart have been completed TWICE for a total of 76 Chart rows.

Knit 2 rows.

Bind off.



For thousands of free patterns, visit our website [www.LionBrand.com](http://www.LionBrand.com)

To order visit our website [www.lionbrand.com](http://www.lionbrand.com) or call: (800) 258-YARN (9276) any time!

Copyright ©1998-2021 Lion Brand Yarn Company, all rights reserved. No pattern or other material may be reproduced -- mechanically, electronically, or by any other means, including photocopying - without written permission of Lion Brand Yarn Company.

## FINISHING

Weave in ends.

### ***Blocking***

Soak Placemat in lukewarm water with a small amount of wool wash for about 15 minutes, then roll gently in a towel to remove as much water as possible. Lay Placemat onto a dry towel, shape gently to finished measurements and allow to dry.

## ABBREVIATIONS

**k** = knit

**p** = purl

**rep** = repeat

**RS** = right side

**st(s)** = stitch(es)

**WS** = wrong side

*Every effort has been made to produce accurate and complete instructions. We cannot be responsible for variance of individual knitters or crocheters, human error, or typographical mistakes.*

*©2021 Lion Brand Yarn Company, all rights reserved.*

For thousands of free patterns, visit our website [www.LionBrand.com](http://www.LionBrand.com)

To order visit our website [www.lionbrand.com](http://www.lionbrand.com) or call: (800) 258-YARN (9276) any time!

Copyright ©1998-2021 Lion Brand Yarn Company, all rights reserved. No pattern or other material may be reproduced -- mechanically, electronically, or by any other means, including photocopying - without written permission of Lion Brand Yarn Company.